

# STANDARD OPTIONAL LIST

## Standard Equipment

ISO Standard Cabin  
All-weather Steel Cab with All-around Visibility  
Safety Glass Windows  
Sliding Fold-in Front Window  
Sliding Side Window  
Air-conditioner  
Accessory Box Ashtray

## Computer Aided Power Optimization (New CAPO) system

3-power Mode, 2-work Mode  
Auto Deceleration & One Touch Deceleration System  
Auto Engine Overheat Prevention System  
Self Diagnostic System  
Centralized Monitoring  
LCD Display  
Engine Speed  
Clock & Error Code  
Mobile Charging Point  
Fuel Level Gauge  
Engine Coolant Temperature Gauge  
Hyd. Oil Temperature Gauge

## Warning

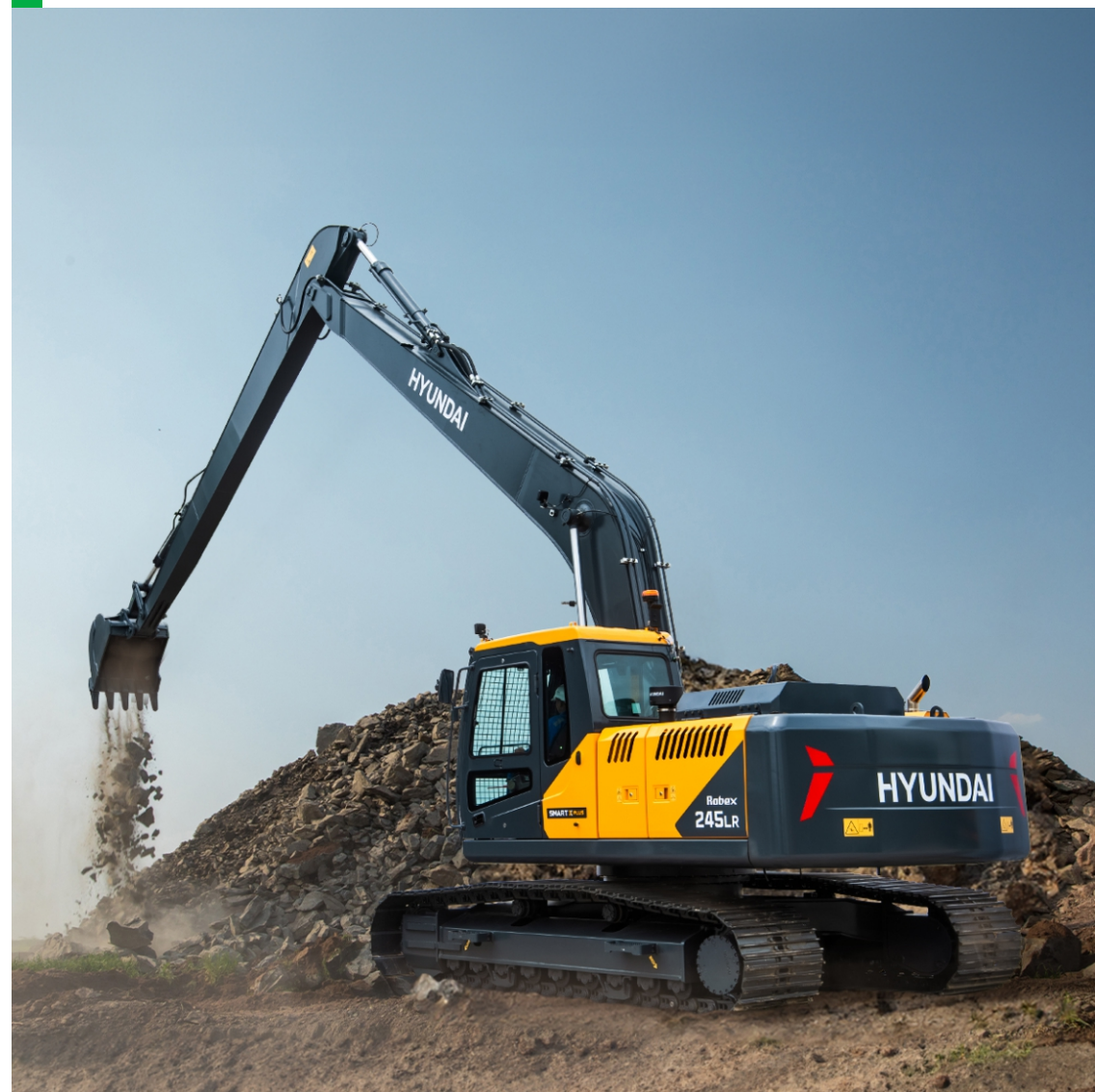
Fuel Level  
CPU  
Engine Oil Pressure  
Engine Coolant Temperature  
Hyd. Oil Temperature  
Low Battery  
Air Cleaner Clogging  
12V Power Outlet (24V DC to 12V DC Converter)  
Door and Cab Locks, One Key  
One Outside Rearview Mirror  
Fully Adjustable Suspension Seat  
Slidable Joystick Pilot-operated  
Two Front Working Lights and Two Cabin Work Lights  
LED Working Lamps  
Cyclonic Pre Air Cleaner  
Removable Type Floor Mat  
Electric Horn

Batteries(2 x 12V x 100AH)  
Battery Master Switch  
Removable Clean Out Screen For Oil Cooler  
Automatic Swing Brake  
Removable Reservoir Tank  
24V Power Socket  
Fuel Pre-filter  
Boom Holding System  
Arm Holding System  
Counter Weight (5300 kg)  
Long Reach Boom (8.2m, 26'9")  
Arm (6.3m, 20'7")  
Standard Bucket (0.52 m<sup>3</sup>)  
Track Shoes (800mm, 31")  
Track Rail Guard  
Cabin Front Protector  
Bluetooth FM Radio/USB player  
Operator Kit  
Tool Kit  
Remote Management System (Hi-Track)

## Optional Equipment

Sun Visor for Cabin Inside  
Beacon Lamp  
Single Acting Piping Kit  
Fuel Refilling Pump  
Travel Alarm  
Operator Seat Belt  
Fire Extinguisher  
Emergency Shutdown Switch  
Cabin Top Guard  
Swing Lock  
Fuel Refilling Pump

# R245LR SMART X PLUS



HD Hyundai Construction Equipment India Pvt. Ltd.

### Factory Location

Plot No. A-2, M.I.D.C. Chakan, Phase II,  
Village: Khalumbre, Taluka: Khed, Dist: Pune-410501  
E mail: hyundai.care@theconnectionsindia.com  
Toll Free No.: 1800 209 8600

### Please Contact

Scan the QR code  
with your phone  
camera & visit



© @hd-hyundai.com @hdhyundaiindia @HDHyundaiCEIndia  
in @HDHyundaiCEIndia @HDHyundaiCEIndia @HyundaiCEIndia

OPERATING WEIGHT: 24500 kgs | GROSS POWER : 140 HP @ 2000 rpm | BUCKET CAPACITY: 0.52m<sup>3</sup>

**HD** HYUNDAI  
CONSTRUCTION EQUIPMENT  
INDIA

# DESIGNED FOR SMART WORK

## R245LR SMART X PLUS

### BEST-IN-CLASS PERFORMANCE

- Cyclonic Air Precleaner **NEW**
- Advanced CAPO System
- Hydraulic Flow Summation
- Swing Priority
- Regeneration System
- Excellent Digging Forces

### OPERATOR COMFORT

- Bluetooth FM Radio **NEW**
- Removable Type Floor Mat **NEW**
- LED Working Lamps **NEW**
- Spacious Cabin
- Fully Adjustable Seat
- Enhanced Visibility
- User-friendly Functionality

### INCREASED MACHINE DURABILITY

- Strengthened Undercarriage
- Proven Upper Structure
- Forged Ring Body
- Reinforced Front Attachment



### IMPROVED FUEL EFFICIENCY

- New ECO Mode
- Fuel Saving Kit
- Electro Hydraulic System
- Auto Deceleration System
- Efficient Breaker Mode

### SIMPLIFIED MAINTENANCE

- Fuel Filler Pump\* **NEW**
- Easy Serviceability
- Extended Maintenance
- Large Capacity Fluid Tank
- Low Life Cycle Cost

### PARTS & SUPPORT

- Remote Management System (Hi-Track)
- Hyundai Genuine Parts
- Max Parts Availability
- On-Site Product Support

### ENHANCED SAFETY

- Emergency Shutdown Switch\* **NEW**
- Turbocharge Guard **NEW**
- Cabin Top Guard\* **NEW**
- Beacon Lamp\* **NEW**
- Swing Lock\* **NEW**
- Seat Belt\*

( \* Optional )



# PERFORMANCE

## PRIDE AT WORK

Hyundai construction equipment strives to build state-of-the art earthmoving equipment to give every operator maximum performance, more precision, versatile machine preferences, and proven quality. New technologies designed to improve performance and precision, make the Hyundai excavator smooth, fast and easy to control. Take pride in your work with Hyundai !



### ENGINE

The water cooled, 4 cycle diesel, 6 cylinder in line, direct injection turbocharged engine is built for power, reliability, efficiency.

The engine is manufactured to perform in wide range of heat, humidity and dust conditions without compromising on productivity.



# R245LR SMART X PLUS



### HYDRAULIC SYSTEM

Electro Hydraulic Control System provides wide range of flow at various workloads for paramount productivity. Open center design of Main Control Valve (MCV) ensures fast response and maximum efficiency in tough conditions.

### CHOICE OF OPERATING MODE

Working Mode	Advantage
P Mode	<ul style="list-style-type: none"><li>• Maximum Power</li><li>• Fast Cycle time</li></ul>
S Mode	<ul style="list-style-type: none"><li>• Balance between power and fuel efficiency</li></ul>
Eco Mode	<ul style="list-style-type: none"><li>• Better fuel efficiency</li></ul>
Breaker Mode	<ul style="list-style-type: none"><li>• Sets pump flow to optimal level and boosts efficiency</li></ul>

### BEST-IN-CLASS DIGGING FORCES

Higher output even in tough working conditions

- Bucket -10300 kgf
- Arm - 5500 kgf



### BEST-IN-CLASS TRAVEL PERFORMANCE

- Higher Traction Force
- Dual Travel Option
- High Maneuverability

Traction Force : 21100 kgf

### EFFICIENT COMBINED OPERATION

Inbuild **Flow Summation** system and **Swing Priority** function leads to faster swing cycle results in excellent output

# FUEL EFFICIENCY



## IMPROVED FUEL EFFICIENCY

Advanced CAPO System, Newly Designed CMCU, Power & Working Mode options results in excellent fuel efficiency.

## FUEL SAVING KIT

- Monitor undue load and cut down losses.
- Provides better fuel efficiency

## NEGATIVE FLOW CONTROL

Optimum balance between pump and engine output for better fuel efficiency



## ARM REGENERATION SYSTEM

- Smooth Operation
- Prevent Cavitation
- Increased Performance & Fuel Efficiency

## ONE TOUCH IDLE & AUTO DECELERATION

Prevents fuel losses by reducing engine rpm during no-load condition

## EXCLUSIVE BREAKER MODE

Excellent fuel saving due to exclusive power for breaker operation



## INSTRUMENT PANEL

The user-friendly multi language option cluster making it easy to check all critical systems like

- Hydraulic oil temperature,
  - Coolant temperature
  - Fuel level
  - Self diagnostic checks
  - Maintenance management
- to optimizing productivity needs ensuring fuel efficiency

# OPERATOR COMFORT

## OPERATOR DELIGHT

More space, better visibility, powerful air-conditioning and adjustable fully suspension seat, easy to access controls ensure that the operator can work for longer hours without stress or fatigue in the comfortable and safe working environment.

360 degree visibility, fully open sunroof, added side lamp & mirror ensure comfortable, safe working environment.



## OPERATOR SEAT

- Easily adjustable fully suspension seat with adjustable arm rest
- Operator seat belt



## LED LAMP NEW



## SPACIOUS CABIN

- More head room, large space, large door for easy entry and exit

## AIR CONDITIONER

- High Performance Air Conditioner
- Improved AC Ducting
- Water Bottle Cooling System

## SUN VISOR (OPTIONAL)



## REMOVABLE TYPE FLOOR MAT



## INTEGRATED AUDIO SYSTEM WITH BLUETOOTH NEW





# RELIABILITY



## REINFORCED FRONT ATTACHMENTS

Use of specialized advance steel plates and reinforced design for higher strength and durability

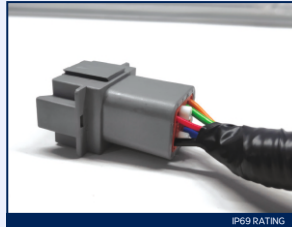
## RUGGED UNDERCARRIAGE

X frame provides excellent resistance to torsional bending to enhance structure life



## RELIABLE ELECTRICALS

- Dust and water proof connectors
- Longer component life



## SWING & TRAVEL SYSTEM

Highly efficient Hyundai designed Swing and Travel system ensure maximum reliability and performance.



## REINFORCED IDLER FRAME



## LOWER FRAME BELLY GUARD



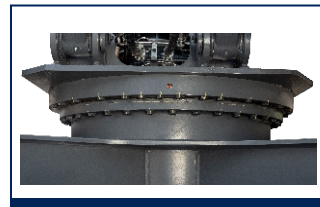
## AIR PRE-CLEANER NEW

- Improves engine performance
- Removes dirt and debris from air before entering air filter
- Improves air filter life
- Low maintenance cost

## CASTED BUCKET CONTROL LINK



## FORGED RING BODY



# SERVICEABILITY

## LEADING SERVICE INTERVAL

More efficient cooling system which extend service intervals, minimize operating cost and reduce machine down time.

### CHANGE INTERVAL

Hydraulic Oil	5000 hrs
Hydraulic Filter	1000 hrs
Engine Oil	500 hrs
Engine Filter	500 hrs

## IMPROVED COOLING EFFICIENCY

- Radiator and oil cooler are arranged side by side to maximize efficiency
- Easily accessible from ground level to clean



## LARGE LCD MONITOR

Operator can check the machine's vital signs without any difficulties

- **Maintenance Management**  
Proactive maintenance
- **Self Diagnostic**  
Reduces down time
- **Warning Indicator**  
Ensures safe working



## DURABLE MOUNTING PIN BUSH



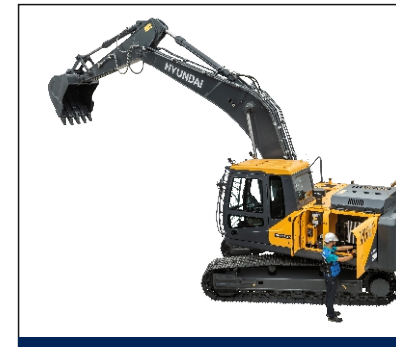
## FUEL FILLER PUMP NEW



## HINGED TYPE FRONT GLASS GUARD FOR EASY CLEANING

## EASY ACCESSIBILITY

Easy access for maintenance means regular checks get done faster. Hyundai's SMARTX PLUS machines feature easy service access to increase uptime and reduce operating costs.



# SAFETY

## SAFETY - PEACE OF MIND AND OPERATOR CONVENIENCE

Cabin is integrally welded with low-stress using high strength steel to provide enhanced protection. Handrails and steps are provided for easy operation. Engine fan guard avoid chances of accidental injury.



### COUNTER BALANCE VALVE

Works as a hydrostatic brake and prevents machine against accidental roll down in steep gradients.



### BOOM & ARM HOLDING SYSTEM

Prevent attachments from drifting against gravity due to prolonged overhanging.



### ANTI RESTART FUNCTION

Prevents starter from damage during engine operation.

### AUTO ENGINE OVERHEAT & WARM UP FUNCTION



### BATTERY DISCONNECT SWITCH



### LOWER BELLY GUARD



### GREASE NIPPLE WITH CAP NEW



### POSITIVE LOCKING CLAMP NEW



### TANK SAFETY COVER



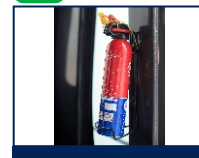
### TURBOCHARGE GUARD NEW



### EMERGENCY SHUTDOWN SWITCH NEW



### FIRE EXTINGUISHER NEW



# PARTS & SUPPORT

## HYUNDAI GENUINE PARTS

Developed in synergy with our machines, Hyundai parts and lubricants ensure that you get the high levels of performance, reliability and safety that come with the complete Hyundai experience. Enjoy the confidence and assurance of the most stringent testing procedures and the high quality manufacturing processes safeguarding your machine's health. Experience the versatility of our 200+ strong outlet network across India.

### WHY RISK IT?

Maximize profits and extend your machine's life.



## BENEFITS OF USING GENUINE HYUNDAI PARTS AND LUBRICANTS

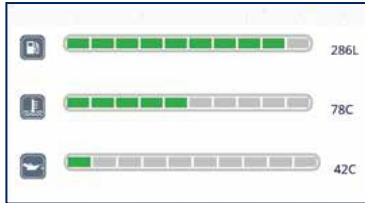
- Genuine Hyundai Parts meet strict specifications and standards in Chemistry, Microstructure and Tensile Strength.
- Benefit from the continuous improvements and advancements made by Hyundai's technical team.
- Improved performance of hydraulics and engine components.
- Enjoy greater productivity with higher uptime
- Higher resale values.
- Reduced oil consumption and unexpected breakdowns.
- Enhanced component life.





# HI-TRACK

Our unique remote management system allows customers to access machine operating information & obtain service & maintenance alerts at the touch of a button



## PROACTIVE MAINTENANCE

Access your machines service & maintenance history with the utmost convenience. Plan your service schedules intelligently with our regular reminders.



## ALARMS

Get notified of system alarms & protect your machine from critical faults & experience repairs.



## INCREASED PRODUCTIVITY

Remote management system empowers you to enhance the efficiency of your operations. Make better decision by comparing the machine's operating time with its travelling idling & breaker use duration.

## CONVENIENT & EASY MONITORING

Enjoy round the clock and on the move access to your machine information through the website or mobile app.



**MULTILINGUAL USER INTERFACE** **NEW**

**IMPROVED DATA CONNECTIVITY** **NEW**

## SECURITY & FLEET MONITORING

Protect your machine from theft or unauthorized use. GPS features allows you to create a geo-fence & alerts you if the machine moves out of the defined boundary.

# SPECIFICATION

## Engine

<b>Maker/Model</b>		Cummins6BT5.9-C	
Rated flywheel horse power	SAE	J1995 (Gross) J1349 (Net)	140HP (104KW) @2000rpm 136HP (101KW) @2000rpm
Max Torque	57,6kgf.m @1600rpm		
Displacement	5880cc		

## Hydraulic System

<b>Main pump</b>	
Type	Two variable displacement piston pumps
Max. flow	2x220 lpm
Sub-pump for pilot circuit	Gear pump
Cross-sensing & fuel saving pump system	

## Hydraulic Motors

Travel	Two speed axis piston motor with counter balance valve and parking brake
Swing	Axial piston motor with automatic brake

## Relief Valve Settings

Boom	330kgf/cm <sup>2</sup>
Arm	300kgf/cm <sup>2</sup>
Bucket	280kgf/cm <sup>2</sup>
Travel	330kgf/cm <sup>2</sup>
Swing Circuit	240kgf/cm <sup>2</sup>
Pilot Circuit	35 kgf/cm <sup>2</sup>
Service valve	Installed

## Coolant & Lubricant Capacity

<b>REFILLING</b>	<b>LITER</b>
Fuel tank	340
Engine coolant	35
Engine oil	21
Swing device	5
Final drive (each)	6,0
Hydraulic system / Hydraulic tank	280/150

## Drives & Brakes

Drive method	Fully hydrostatic type
Drive motor	Axial piston motor in-shoe design
Reduction system	Planetary reduction gear
Max.drawbar pull	21100kgf (46500 lbf)
Max.travel speed (high/low)	5.3kmph/3.4kmph
Gradeability	35 Degree (70%)
Parking brake	Multi wet disc

## Undercarriage

X-Leg type centre frame is integrally welded with reinforced box section track frames. The undercarriage includes lubricated rollers, idlers, track adjusters with shock absorbing spring and sprockets and trackchain with triple grouse shoes.

Centre frame	X-leg type
Track frame	Pentagonal box type
No. of shoes on each side	49
No. of carrier rollers each side	2
No. of track rollers each side	9
No. of rail guard each side	2

## Swing System

Swing motor	Axial piston motor
Swing reduction	Planetary gear reduction
Swing bearing lubrication	Grease bathed
Swing brake	Multi wet disc
Swing speed	11 rpm

## Operating Weight

Shoe Width mm (in)	Operating weight kg (lb)	Ground pressure kgf/cm <sup>2</sup> (psi)
800 mm (31")	24,500 (54,013)	0.52 (7.40)

## Dimensions

	(mm)
A	Tumbler distance
B	Overall length of crawler
C	Ground clearance of counter weight
D	Tail swing radius
D'	Rear-end length
E	Overall width of upper structure
F	Overall height of cabin
G	Min. ground clearance
H	Track gauge
I	Overall length
J	Overall height of boom
K	Track shoe width
L	Overall width
	3640
	4440
	1060
	2830
	2770
	2700
	2920
	480
	2390
	12030
	3280
	800
	3190

# LIFTING CAPACITIES

## LIFTING CAPACITIES R245LR SMART PLUS



Rating over-front

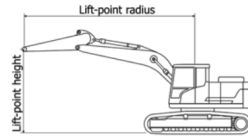


Rating over-side

Boom type	Length[mm]	Arm type		Length[mm]	BK type	Capa.[m]	CWT[kg]	Shoe(wheel)[mm]	
GP	8200	GP		6300	HD	0.52	5300	600	
Lift-point height (m/ft)		Lift-point radius						At max. reach	
		3.0m (9.8ft)		6.0m (19.7ft)		9.0m (29.5ft)		12.0m (39.4ft)	
9.0m	kg								
29.5ft	lb								
6.0m	kg								
19.7ft	lb								
3.0m	kg								
9.8ft	lb								
0.0m	kg	*2,450	*2,450	*4,960	4,130	*3,140	2,340	*2,420	1,460
0.0ft	lb	*5,400	*5,400	*10,930	9,110	*6,920	5,160	*5,340	3,220
-3.0m	kg	*3,930	*3,930	*5,850	3,660	*3,630	2,090	2,560	1,350
-9.8ft	lb	*8,660	*8,660	*12,900	8,070	*8,000	4,610	5,640	2,980
-6.0m	kg	*6,270	*6,270	*5,880	3,620	*3,730	2,040		
-19.7ft	lb	*13,820	*13,820	*12,960	7,980	*8,220	4,500		
-9.0m	kg	*9,110	*9,110	*4,870	3,900				
-29.5ft	lb	*20,080	*20,080	*10,740	8,600				

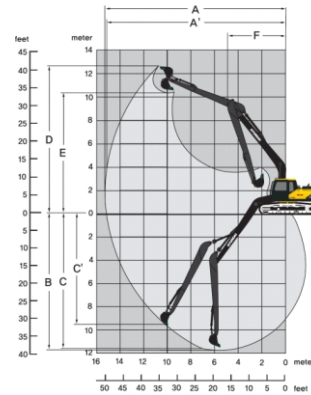
Notes:

- Lifting capacity are based on ISO 10567.
- Lifting capacity does not exceed 75% of tipping load with the machine on firm, level ground or 87% of full hydraulic capacity.
- The Lift-point is bucket pivot mounting pin on the arm (without bucket mass).
- (\*) indicates load limited by hydraulic capacity.



## Working Ranges (mm)

Arm length		6300
A	Max. digging reach	15,265 (50'1")
A'	Max. digging reach on ground	15,163 (49'9")
B	Max. digging depth	11,754 (38'7")
C'	Max. diggign depth(8ft level)	11,654 (38'3")
C	Max. Vertical wall digging depth	8,608 (28'3")
D	Max. digging height	12,653 (41'6")
E	Max. dumping height	10,427 (34'3")
F	Min. swing radius	4,507 (14'9")



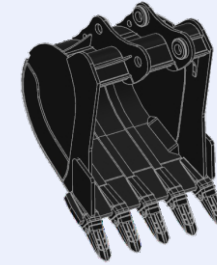
Bucket Digging Force 10300 kgf  
Arm Crowd Force (6.3m) 5500 kgf

# SPECIFICATION

## BUCKETS

All buckets are welded with high-strength steel.

### HEAVY DUTY



Capacity - M <sup>3</sup>			Width - mm	Weight - kg	Tooth EA	Recommendation
Bucket Type	SAE Heaped	CECE heaped				8.3m Boom
HD	0.52	0.46	940	586	5	5.3T CWT
						6.3m Arm

▲ : Applicable for materials with density of ≤ 1,100 kg/m<sup>3</sup>

## ATTACHMENT

Boom and arm are of all-welded with a low-stress, full-box section design. 8.2m (26' 9") Long reach boom and 6.3m (20' 7") Arm are available. Buckets are all-welded, high-strength steel implements.

## DIGGING FORCE

Arm	Length	mm(ft.in)	*6300 (20'7")
	Weight	kg(lbs)	1162 (2561)
Bucket Digging Force	SAE	kN	84
		kgf	8,600
	ISO	lbf	18,900
		kN	101
Arm Crowd Force	SAE	kgf	10,300
		lbf	22,800
		kN	52
	ISO	kgf	5,300
		lbf	11,800
		kN	54
		kgf	5,500
		lbf	12,000

\*Standard arm