

Dealer

Disclaimer: All the locations marked on the map are of dealers head offices

R230LM SMART X PLUS



* Design aesthetics & features may vary from actual

HD Hyundai Construction Equipment India Pvt. Ltd.

Factory Location

Plot No. A-2, M.I.D.C. Chakan, Phase II,
Village: Khalumbre, Taluka: Khed, Dist: Pune-410501
E mail: hyundai.care@theconnectionsindia.com
Toll Free No.: 1800 209 8600

Please Contact

Scan the QR code
with your phone
camera & visit



SEP 2025

@hd-hyundai-ce
 @hdhyundaiindia
 @HDHyundaiCEIndia
 @hdhyundaiindia
 @HyundaiCEIndia

BUCKET CAPACITY: 0.87 - 1.7m³

GROSS POWER : 148 HP @ 2000 rpm

OPERATING WEIGHT: 23300kgs

DESIGNED FOR SMART WORK

R230LM SMART X PLUS

BEST-IN-CLASS PERFORMANCE

- Cyclonic Air Precleaner **NEW**
- Wide Range of Bucket **NEW**
- Advanced CAPO System
- Hydraulic Flow Summation
- Swing Priority
- Regeneration System
- Excellent Digging Forces

OPERATOR COMFORT

- Bluetooth FM Radio **NEW**
- LED Working Lamps **NEW**
- Premium Cabin **NEW**
- HVAC **NEW**
- Cold Storage Box **NEW**
- Enhanced Cooling Efficiency 10% **NEW**
- Spacious Cabin
- Fully Adjustable Seat
- Enhanced Visibility
- User-friendly Functionality

INCREASED MACHINE DURABILITY

- Superior Lubrication and Wear Protection **NEW**
- Polymer Shim **NEW**
- Stub Adapter **NEW**
- Strengthened Undercarriage
- Proven Upper Structure
- Forged Ring Body
- Heavy Duty Front Attachment



IMPROVED FUEL EFFICIENCY

- New ECO Mode
- Fuel Saving Kit
- Electro Hydraulic System
- Auto Deceleration System
- Efficient Breaker Mode

SIMPLIFIED MAINTENANCE

- Fuel Filler Pump **NEW**
- Easy Serviceability
- Extended Maintenance
- Large Capacity Fluid Tank
- Low Life Cycle Cost

PARTS & SUPPORT

- 4G Remote Management System (Hi-Track)
- Hyundai Genuine Parts
- Max Parts Availability
- On-site Product Support

ENHANCED SAFETY

- Emergency Shutdown Switch* **NEW**
- Turbocharge guard **NEW**
- Cabin Top Guard* **NEW**
- Beacon Lamp* **NEW**
- Swing Lock* **NEW**
- Seat Belt*

(* Option)

PERFORMANCE

PRIDE AT WORK

Hyundai construction equipment strives to build state-of-the-art earthmoving equipment to give every operator maximum performance, more precision, versatile machine preferences, and proven quality.

New technologies designed to improve performance and precision, make the Hyundai excavator smooth, fast and easy to control.

Take pride in your work with Hyundai!



ENGINE

The water cooled, 4 cycle diesel, 6 cylinder in line, direct injection turbocharged, charge air cooled engine is built for power, reliability, efficiency.

The engine is manufactured to perform in wide range of heat, humidity and dust conditions without compromising productivity.



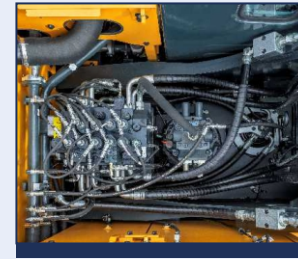
R230LM

SMART X PLUS



HYDRAULIC SYSTEM

Electro hydraulic control system provides wide range of flow at various workloads for paramount productivity. Open center design of Main Control Valve (MCV) ensures fast response and maximum efficiency in tough conditions.



CHARGE AIR COOLER

- Cools the air as it passes through turbocharger
- Resulting in cool high density, bigger mass of air being pumped to engine
- Increasing the burning efficiency

CHOICE OF OPERATING MODE

Working Mode	Advantage
P Mode	<ul style="list-style-type: none"> • Maximum Power • Fast Cycle time
S Mode	<ul style="list-style-type: none"> • Balance between power and fuel efficiency
Eco Mode	<ul style="list-style-type: none"> • Better fuel efficiency
Breaker Mode	<ul style="list-style-type: none"> • Sets pump flow to optimal level and boosts efficiency



EFFICIENT COMBINED OPERATION

Inbuild flow summation system and Swing priority function leads to faster swing cycle results in excellent output



BEST-IN-CLASS TRAVEL PERFORMANCE

- Higher traction force
 - Dual travel option
 - High maneuverability
- Traction Force : 21100 kgf**



DIGGING FORCES

Higher output even in tough working conditions

- Bucket -16000 kgf
- Arm -12600 kgf

FUEL EFFICIENCY



IMPROVED FUEL EFFICIENCY

Advanced CAPO System, Newly Designed CMCU, Power & Working Mode options results in excellent fuel efficiency.

FUEL SAVING KIT

- Monitor undue load and cut down losses.
- Provides better fuel efficiency

NEGATIVE FLOW CONTROL

Optimum balance between pump and engine output for better fuel efficiency



ONE TOUCH IDLE & AUTO DECELERATION

Prevents fuel losses by reducing engine rpm during no-load condition

EXCLUSIVE BREAKER MODE

Excellent fuel saving due to exclusive power for breaker operation



ARM REGENERATION SYSTEM

- Smooth Operation
- Prevent Cavitation
- Increased Performance & Fuel Efficiency



INSTRUMENT PANEL

The user-friendly multi language option cluster making it easy to check all critical systems like

- Hydraulic oil temperature,
 - Coolant temperature
 - Fuel level
 - Self diagnostic checks
 - Maintenance management
- to optimizing productivity needs ensuring fuel efficiency

OPERATOR COMFORT

OPERATOR DELIGHT

More space, better visibility, powerful air-conditioning and adjustable fully suspension seat, easy to access controls ensure that the operator can work for longer hours without stress or fatigue in the comfortable and safe working environment

360 degree visibility, fully open sunroof, added side lamp & mirror ensure comfortable, safe working environment.



OPERATOR SEAT

- Easily adjustable fully suspension seat with adjustable arm rest
- Operator seat belt



SPACIOUS CABIN

- More head room, large space, large door for easy entry and exit

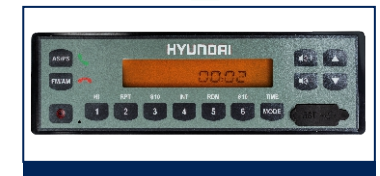
LED LAMP NEW



SUN VISOR (OPTIONAL)



INTEGRATED AUDIO SYSTEM WITH BLUETOOTH NEW



OPERATOR COMFORT

CABIN ENHANCEMENT

- Enhanced Cooling Capacity by 10%
- Enhanced Cooling Efficiency by 10%
- Controller with Temperature Adjustment
- HVAC { Cooling + Heating }
- Interior- Premium { Automotive Styling }
- AC Ducts-Side Wall & Foot
- Hot / Cold Box
- New Premium Floor Mat

HOT & COLD STORAGE BOX



AC DUCT SIDE WALL & LEG COOLING



AC CONTROL PANEL



RELIABILITY



REINFORCED FRONT STRUCTURE

Use of specialized advance steel plates and reinforced design for higher strength and durability

HEAVY DUTY BUCKET WITH STUB ADAPTER **NEW**

ULTIMATE RELIABILITY



Reinforced idler frame



Lower frame belly guard



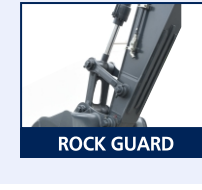
1 pc cast H link



Reinforced bucket link



HD TRACK LINK



ROCK GUARD

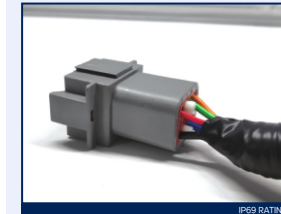


TANK SAFETY COVER



SWING & TRAVEL SYSTEM

Highly efficient Hyundai designed swing and travel system ensure maximum reliability and performance.



RELIABLE ELECTRICALS

- Dust and water proof connectors
- Longer component life



AIR PRE-CLEANER **NEW**

- Removes dirt and Debris from air before entering air filter
- Improves air filter life
- Low maintenance cost

RUGGED UNDERCARRIAGE

X frame provides excellent resistance to torsional bending to enhance structure life



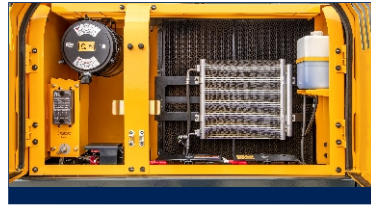
SERVICEABILITY

LEADING SERVICE INTERVAL

More efficient cooling system which extend service intervals, minimize operating cost and reduce machine down time.

CHANGE INTERVAL

Hydraulic oil	5000 hrs
Hydraulic filter	1000 hrs
Engine oil	500 hrs
Engine Filter	500 hrs



IMPROVED COOLING EFFICIENCY

- Radiator and oil cooler are arranged side by side to maximize efficiency
- Easily accessible from ground level to clean

DURABLE MOUNTING PIN BUSH



FUEL FILLER PUMP NEW



DIMPLE BUSH NEW



LARGE LCD MONITOR

Operator can check the machine's vital signs without any difficulties

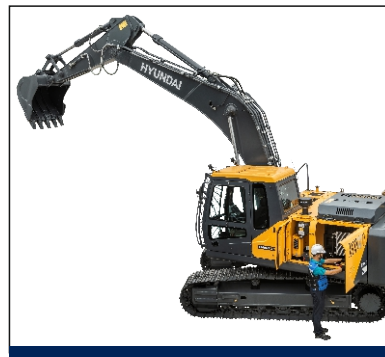
- **Maintenance Management**
Proactive maintenance
- **Self Diagnostic**
Reduces down time
- **Warning Indicator**
Ensures safe working



HINGED TYPE FRONT GLASS GUARD FOR EASY CLEANING

EASY ACCESSIBILITY

Easy access for maintenance means regular checks get done faster. Hyundai's SMART X PLUS machines feature easy service access to increase uptime and reduce operating costs.



SAFETY

SAFETY - PEACE OF MIND AND OPERATOR CONFIDENCE

Cabin is integrally welded with low-stress using high strength steel to provide enhanced protection. Handrails and steps are provided for easy operation. Engine fan guard avoid chances of accidental injury.



COUNTER BALANCE VALVE

Works as a hydrostatic brake and prevents machine against accidental roll down in steep gradients.



BOOM & ARM HOLDING SYSTEM

Prevent attachments from drifting against gravity due to prolonged overhanging.



ANTI RESTART FUNCTION

Prevents starter from damage during engine operation



BATTERY DISCONNECT SWITCH

Cut off power during maintenance and protect batteries from excessive drain



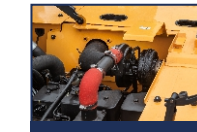
AUTO ENGINE OVERHEAT PREVENTION

Auto Deceleration with activation of engine overheat warning to avoid catastrophic failure



EMERGENCY SHUTDOWN SWITCH NEW

Stop the excavator's operation in case of an emergency

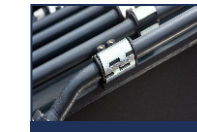


TURBOCHARGE GUARD NEW

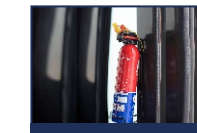
Safety During Maintenance



GREASE NIPPLE WITH CAP NEW



POSITIVE LOCKING CLAMP NEW



FIRE EXTINGUISHER NEW

PARTS & SUPORT

HYUNDAI GENUINE PARTS

Developed in synergy with our machines, Hyundai parts and lubricants ensure that you get the high levels of performance, reliability and safety that come with the complete Hyundai experience. Enjoy the confidence and assurance of the most stringent testing procedures and the high quality manufacturing processes safeguarding your machine's health. Experience the versatility of our 200+ strong outlet network across India.

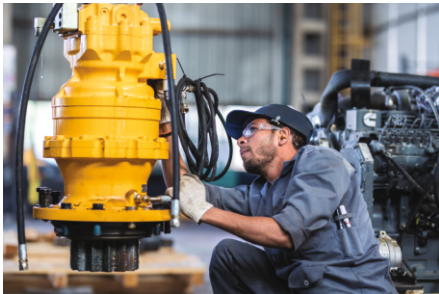
WHY RISK IT?

Maximize profits and extend your machine's life.



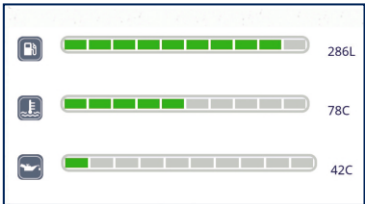
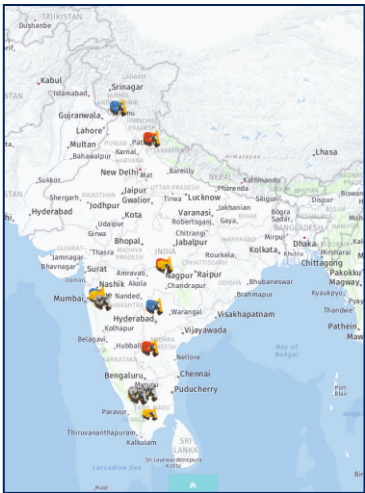
BENEFITS OF USING GENUINE HYUNDAI PARTS AND LUBRICANTS

- Genuine Hyundai Parts meet strict specifications and standards in Chemistry, Microstructure and Tensile Strength.
- Benefit from the continuous improvements and advancements made by Hyundai's technical team
- Improved performance of hydraulics and engine components
- Enjoy greater productivity with higher uptime
- Higher resale values
- Reduced oil consumption and unexpected breakdowns
- Enhanced component life



HI-TRACK

Our unique remote management system allows customers to access machine operating information & obtain service & maintenance alerts at the touch of a button



PROACTIVE MAINTENANCE

Access your machines service & maintenance history with the utmost convenience. Plan your service schedules intelligently with our regular reminders.

SELECT REPORTS	
Geo Zone In/Out Detail	<input checked="" type="radio"/>
Fault Code	<input type="radio"/>
Vehicle Usage Summary	<input type="radio"/>
Temperature Record	<input type="radio"/>

ALARMS

Get notified of system alarms & protect your machine from critical faults & experience repairs.

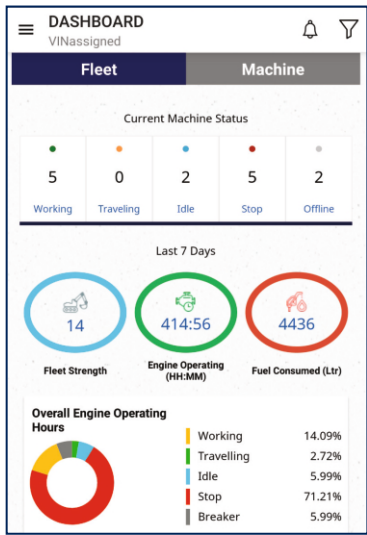


INCREASED PRODUCTIVITY

Remote management system empowers you to enhance the efficiency of your operations. Make better decision by comparing the machine's operating time with its travelling idling & breaker use duration.

CONVENIENT & EASY MONITORING

Enjoy round the dock and on the move access to your machine information through the website or mobile app.



MULTILINGUAL USER INTERFACE **NEW**

IMPROVED DATA CONNECTIVITY **NEW**

SECURITY & FLEET MONITORING

Protect your machine from theft or unauthorized use. GPS features allows you to create a geo-fence & alerts you if the machine moves out of the defined boundary.

SPECIFICATIONS

Engine

Maker/Model		Cummins6BTAA-5.9C	
Rated flywheel horse power	SAE	J1995 (Gross) J1349 (Net)	148HP (110KW) @2000rpm 145HP (108KW) @2000rpm
Max Torque		63.7Kgf (462 lbf.ft) @1300rpm	

Hydraulic System

Main pump	
Type	Two variable displacement piston pumps
Max. flow	2x220 lpm
Sub-pump for pilot circuit	Gear pump
Cross-sensing & fuel saving pump system	

Hydraulic Motors

Travel	Two speed axial piston motor with counter balance valve and parking brake
Swing	Axial piston motor with automatic brake

Relief Valve Settings

Implement Circuit	330kgf/cm ²
Travel	330kgf/cm ²
Swing Circuit	240kgf/cm ²
Pilot Circuit	35kgf/cm ²
Service valve	Installed

Coolant & Lubricant Capacity

REFILLING	LITER
Fuel tank	340
Engine coolant	35
Engine oil	21
Swing device	5
Final drive (each)	6.0
Hydraulic system / Hydraulic tank	280 / 150

Drives & Brakes

Drive method	Fully hydrostatic type
Drive motor	Axial piston motor in-shoe design
Reduction system	Planetary reduction gear
Max.drawbar pull	21100kgf (46500 lbf)
Max.travel speed (high/low)	5.3kmph/3.4kmph
Grade ability	35 Degree (70%)
Parking brake	Multi wet disc

Undercarriage

X-Leg type centre frame is integrally welded with reinforced box section track frames. The undercarriage includes lubricated rollers, idlers, track adjusters with shock absorbing spring and sprockets and trackchain with triple grouse shoes.

Centre frame	X-leg type
Track frame	Pentagonal box type
No. of shoes on each side	49
No. of carrier rollers each side	2
No. of track rollers each side	9
No. of rail guard each side	3

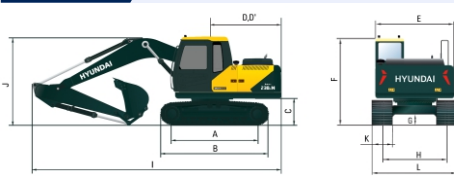
Swing System

Swing motor	Axial piston motor
Swing reduction	Planetary gear reduction
Swing bearing lubrication	Grease bathed
Swing brake	Multi wet disc
Swing speed	11 rpm

Operating Weight

Shoe Width mm (in)	Operating weight kg (lb)	Ground pressure kgf/cm ² (psi)
600 mm (24")	23,300 (51,368)	0.50 (7.11)

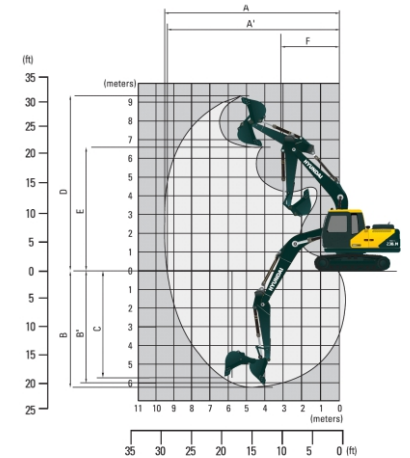
Dimensions

	(mm)
	
A Tumbler distance	3640
B Overall length of crawler	4440
C Ground clearance of counter weight	1060
D Tail swing radius	2845
D' Rear-end length	2770
E Overall width of upper structure	2700
F Overall height of cabin	2920
G Min. ground clearance	480
H Track gauge	2390
I Overall length	9620
J Overall height of boom	3180
K Track shoe width	600
L Overall width	2990

SPECIFICATIONS

Working Ranges

		(mm)	
Arm length (std.)		*2400	2920
A	Max. digging reach	9,476 (31'1")	9,952 (32'8")
A'	Max. digging reach on ground	9,311 (30'7")	9,795 (32'2")
B	Max. digging depth	6,222 (20'5")	6,742 (22'1")
B'	Max. diggign depth(8ft level)	6,014 (19'9")	6,563 (21'6")
C	Max. Vertical wall digging depth	5,190 (17'0")	5,828 (19'1")
D	Max. digging height	9,269 (30'5")	9,524 (31'3")
E	Max. dumping height	6,487 (21'3")	6,727 (22'1")
F	Min. swing radius	3,658 (12'0")	3,673 (12'1")



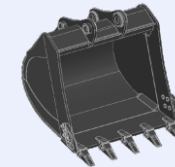
Bucket Digging Force 16000 kgf

Arm Crowd Force (2.4 m) 12600 kgf

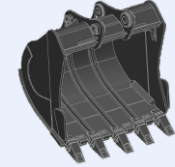
BUCKETS

All buckets are welded with high-strength steel.

GENERAL PURPOSE



HEAVY DUTY



Capacity - M3			Width - mm	Weight - kg	Tooth EA	Recommendation	
						5.68m Boom	
Bucket Type	SAE Heaped	CECE heaped				4.4T CWT	
						2.4m Arm	2.92m Arm
GP	1.05	0.88	1132	803	5	●	●
GP	1.20	0.92	1283	802	5	●	●
GP	0.87	1.05	966	982	5	●	●
HD	0.95	0.76	1091	1063	5	●	●
HD	1.10	0.81	1256	1127	5	●	●
HD	1.20	0.88	1304	1149	5	●	■
Scoop	0.95		1095	1263	5	●	●

● : Applicable for materials with density of $\leq 2,000 \text{ kg/m}^3$

■ : Applicable for materials with density of $\leq 1,600 \text{ kg/m}^3$

▲ : Applicable for materials with density of $\leq 1,100 \text{ kg/m}^3$

SPECIFICATION

ATTACHMENT

Boom and arm are of all-welded with a low-stress, full-box section design. 5.68m (18' 8") mono boom and 2.4m (7' 10") Arm is available. Buckets are all-welded, high-strength steel implements.

Arm	Length	mm(ft.in)	*2400(7'10")	2920(9'7")
	Weight	kg(lbs)	718(1583)	735(1620)
Bucket Digging Force	SAE	kN	134	134
		kgf	13,600	13,600
		lbf	30,000	30,000
	ISO	kN	157	157
		kgf	16,000	16,000
		lbf	35,200	35,200
Arm Crowd Force	SAE	kN	118	99
		kgf	12,000	10,100
		lbf	26,500	22,300
	ISO	kN	124	104
		kgf	12,600	10,600
		lbf	27,800	23,300

*Standard arm

LIFTING CAPACITIES









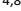

LIFTING CAPACITIES R230LM SMART PLUS

















Rating over-front



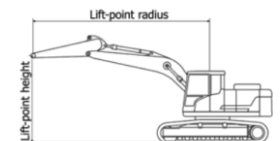
Rating over-side

Boom type	Length[mm]	Arm type	Length[mm]	BK type	Capa.[m³]	CWT[kg]				Shoe(wheel)[mm]		
HD	5680	HD	2400	HD	1.20	4400				600		
Lift-point height (m/ft)		Lift-point radius								At max. reach		
		3.0m (9.8ft)		4.5m (14.8ft)		6.0m (19.7ft)		7.5m (24.6ft)		Capacity		Reach
												m(ft)
7.5m	kg									*4,810	*4,810	5.51
24.6ft	lb									*10,600	*10,600	(18.1)
6.0m	kg					*4,600	*4,600			*4,700	4,030	6.77
19.7ft	lb					*10,140	*10,140			*10,360	8,880	(22.2)
4.5m	kg			*5,800	*5,800	*4,980	4,810	*4,740	3,340	*4,740	3,320	7.52
14.8ft	lb			*12,790	*12,790	*10,980	10,600	*10,450	7,360	*10,450	7,320	(24.7)
3.0m	kg			*7,420	6,890	*5,690	4,560	*4,950	3,260	*4,870	2,990	7.92
9.8ft	lb			*16,360	15,190	*12,540	10,050	*10,910	7,190	*10,740	6,590	(26.0)
1.5m	kg			*8,860	6,400	*6,410	4,320	*5,280	3,160	4,900	2,860	8.02
4.9ft	lb			*19,530	14,110	*14,130	9,520	*11,640	6,970	10,800	6,310	(26.3)
0.0m	kg			*9,530	6,170	*6,900	4,170	5,330	3,080	5,020	2,910	7.82
0.0ft	lb			*21,010	13,600	*15,210	9,190	11,750	6,790	11,070	6,420	(25.7)
-1.5m	kg	*9,940	*9,940	*9,470	6,140	*6,990	4,120			5,510	3,180	7.32
-4.9ft	lb	*21,910	*21,910	*20,880	13,540	*15,410	9,080			12,150	7,010	(24.0)
-3.0m	kg	*12,200	*11,970	*8,730	6,240	*6,400	4,190			*5,780	3,860	6.42
-9.8ft	lb	*26,900	*26,390	*19,250	13,760	*14,110	9,240			*12,740	8,510	(21.1)
-4.5m	kg	*9,370	*9,370	*6,640	6,540					*5,820	5,790	4.93
-14.8ft	lb	*20,660	*20,660	*14,640	14,420					*12,830	12,760	(16.2)

Boom type		Length[mm]		Arm type		Length[mm]		BK type		Capa.[m³]		CWT[kg]		Shoe(wheel)[mm]		
HD		5680		GP		2920		HD		1.20		4400		600		
Lift-point height (m/ft)		Lift-point radius												At max. reach		
		1.5m (4.9ft)		3.0m (9.8ft)		4.5m (14.8ft)		6.0m (19.7ft)		7.5m (24.6ft)		Capacity		Reach		
																m(ft)
7.5m	kg									*4,230	*4,230			*3,580	*3,580	6.19
24.6ft	lb									*9,330	*9,330			*7,890	*7,890	(20.3)
6.0m	kg									*4,120	*4,120			*3,300	*3,300	7.33
19.7ft	lb									*9,080	*9,080			*7,280	*7,280	(24.0)
4.5m	kg									*4,570	*4,570	*4,340	3,410	*3,220	3,020	8.03
14.8ft	lb									*10,080	*10,080	*9,570	7,520	*7,100	6,660	(26.3)
3.0m	kg							*6,800	*6,800	*5,330	4,640	*4,660	3,300	*3,290	2,740	8.40
9.8ft	lb							*14,990	*14,990	*11,750	10,230	*10,270	7,280	*7,250	6,040	(27.6)
1.5m	kg							*8,410	6,540	*6,140	4,380	*5,070	3,180	*3,480	2,630	8.49
4.9ft	lb							*18,540	14,420	*13,540	9,660	*11,180	7,010	*7,670	5,800	(27.9)
0.0m	kg							*9,350	6,230	*6,750	4,190	5,320	3,080	*3,860	2,660	8.31
0.0ft	lb							*20,610	13,730	*14,880	9,240	11,730	6,790	*8,510	5,860	(27.3)
-1.5m	kg		*5,930	*5,930	*9,670	*9,670		*9,560	6,130	6,990	4,100	5,280	3,040	*4,520	2,870	7.84
-4.9ft	lb		*13,070	*13,070	*21,320	*21,320		*21,080	13,510	15,410	9,040	11,640	6,700	*9,960	6,330	(25.7)
-3.0m	kg		*10,410	*10,410	*13,140	11,830		*9,090	6,180	*6,700	4,130			*5,430	3,380	7.01
-9.8ft	lb		*22,950	*22,950	*28,970	26,080		*20,040	13,620	*14,770	9,110			*11,970	7,450	(23.0)
-4.5m	kg				*10,810	*10,810		*7,620	6,390					*5,650	4,650	5.68
-14.8ft	lb				*23,830	*23,830		*16,800	14,090					*12,460	10,250	(18.6)

Notes:

- Lifting capacity are based on ISO 10567.
- Lifting capacity of the Robex Series does not exceed 75% of tipping load with the machine on firm, level ground or 87% of full hydraulic capacity.
- The Lift-point is bucket pivot mounting pin on the arm(without bucket mass).
- (*) indicates load limited by hydraulic capacity.



STANDARD OPTIONAL LIST

Standard Equipment

ISO Standard Cabin
All-weather Steel Cab with All-around Visibility
Safety Glass Windows
Sliding Fold-in Front Window
Sliding Side Window
HVAC Air Conditioner
Accessory Box & Ashtray

Computer Aided Power Optimization (New CAPO) system

3-power Mode, 2-work Mode
Auto Deceleration & One Touch Deceleration System
Auto Engine Overheat Prevention System
Self Diagnostic System
Centralized Monitoring
LCD Display
Engine Speed
Clock & Error Code
Mobile Charging Point
Fuel Level Indicator
Engine Coolant Temperature Indicator
Hyd. Oil Temperature Indicator

Warning

Fuel Level
CPU
Engine Oil Pressure
Engine Coolant Temperature
Hyd. Oil Temperature
Low Battery
Air Cleaner Clogging
Door and Cab Locks, One Key
One Outside Rearview Mirror
Dual Channel Fully Adjustable Suspension Seat
Slidable Joystick Pilot-operated
Two Front Working Lights and Two Cabin Work Lights
LED Working Lamps
Cyclonic Pre Air Cleaner
Electric Horn
Batteries (2 x 12Vx 100AH)
Battery Master Switch
Removable Clean out Screen For Oil Cooler
Automatic Swing Brake

Removable Reservoir Tank
24V Power Socket
Fuel Pre-filter
Turbocharge Guard
Boom Holding System
Arm Holding System
Counter Weight (4400 kg)
Mono Boom (5.68m, 18'8") HD
Arm (2.4m, 7'10") HD
Standard Bucket (1.2 HD m³)
Track Shoes (600mm, 24") HD 12mm thick
Track Rail Guard
Cabin Front Protector
Bluetooth FM Radio/USB player
Operator Kit
Tool Kit
Remote Management System (Hi-Track)
Fuel Refilling Pump

Optional Equipment

Sun Visor For Cabin Inside
Beacon Lamp
Single Acting Piping Kit
Travel Alarm
Operator Seat Belt
Emergency Shutdown Switch
Cabin Top Guard
Swing Lock
Fire Extinguisher
Starting Aid (Air-grid heater, cold weather)

Various Optional Buckets & Attachments

General Purpose bucket (1.2 m³)
General Purpose bucket (1.05 m³)
Heavy Duty Bucket (1.1 m³)
Heavy Duty Bucket (0.95 m³)
Heavy Duty Bucket (0.87 m³)
Scoop Bucket (0.95 m³)
Rock Breaker
Clamshell Bucket
Quick Coupler
Orange Grapple

NOTES