



Dealer

Disclaimer: All the locations marked on the map are of dealers head offices

# R215L SMART X PLUS



\* Design aesthetics & features may vary from actual

HD Hyundai Construction Equipment India Pvt. Ltd.

**Factory Location**

Plot No. A-2, M.I.D.C. Chakan, Phase II,  
Village: Khalumbre, Taluka: Khed, Dist: Pune-410501  
E mail: hyundai.care@theconnectionsindia.com  
Toll Free No.: 1800 209 8600

**Please Contact**

Scan the QR code  
with your phone  
camera & visit



@hd-hyundai-india @hdhyundaiindia @HDHyundaiCEIndia  
@HDHyundaiCEIndia @HDHyundaiCEIndia @HyundaiCEIndia

OPERATING WEIGHT: 22200 kgs | GROSS POWER : 148 HP @ 2000 rpm | BUCKET CAPACITY: 0.87 - 1.7m<sup>3</sup>

# DESIGNED FOR SMART WORK

## R215L SMART X PLUS

### BEST-IN-CLASS PERFORMANCE

- Cyclonic Air Precleaner **NEW**
- Wide Range of Bucket **NEW**
- Advanced CAPO System
- Hydraulic Flow Summation
- Swing Priority
- Regeneration System
- Excellent Digging Forces

### OPERATOR COMFORT

- Bluetooth FM Radio **NEW**
- Removable Type Floor Mat **NEW**
- LED Working Lamps **NEW**
- Spacious Cabin
- Fully Adjustable Seat
- Enhanced Visibility
- User Friendly Functionality

### INCREASED MACHINE DURABILITY

- Superior Lubrication and Wear Protection **NEW**
- Polymer Shim **NEW**
- Stub Adapter **NEW**
- Strengthened Undercarriage
- Proven Upper Structure
- Forged Ring Body
- Reinforced Front Attachment



### IMPROVED FUEL EFFICIENCY

- New ECO Mode
- Fuel Saving Kit
- Electro Hydraulic System
- Auto Deceleration System
- Efficient Breaker Mode

### SIMPLIFIED MAINTENANCE

- Fuel Filler Pump **NEW**
- Easy Serviceability
- Extended Maintenance
- Large Capacity Fluid Tank
- Low Life Cycle Cost

### PARTS & SUPPORT

- Remote Management System (Hi-Track)
- Hyundai Genuine Parts
- Max Parts Availability
- On-Site Product Support

### ENHANCED SAFETY

- Emergency Shutdown Switch\* **NEW**
- Turbocharge Guard **NEW**
- Cabin Top Guard\* **NEW**
- Beacon Lamp\* **NEW**
- Swing Lock\* **NEW**
- Seat Belt\*

( \* Optional )



# PERFORMANCE

## PRIDE AT WORK

Hyundai construction equipment strives to build state-of-the-art earthmoving equipment to give every operator maximum performance, more precision, versatile machine preferences, and proven quality. New technologies designed to improve performance and precision, make the Hyundai excavator smooth, fast and easy to control. Take pride in your work with Hyundai!



### ENGINE

The water cooled, 4 cycle diesel, 6 cylinder in line, direct injection turbocharged, charge air cooled engine is built for power, reliability, efficiency and reduced emissions.

The engine is manufactured to perform in wide range of heat, humidity and dust conditions without compromising productivity.

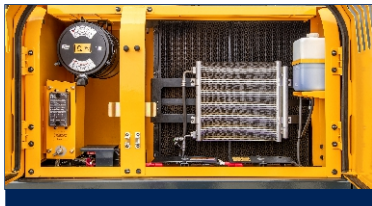


# R215L SMART X PLUS



### HYDRAULIC SYSTEM

Electro hydraulic control system provides wide range of flow at various workloads for paramount productivity. Open center design of Main Control Valve (MCV) ensures fast response and maximum efficiency in tough conditions.



### CHARGE AIR COOLER

- Cools the air as it passes through turbocharger
- Resulting in cool high density, bigger mass of air being pumped to engine
- Increasing the burning efficiency

### CHOICE OF OPERATING MODE

Working Mode	Advantage
P Mode	<ul style="list-style-type: none"><li>• Maximum Power</li><li>• Fast Cycle time</li></ul>
S Mode	<ul style="list-style-type: none"><li>• Balance between power and fuel efficiency</li></ul>
Eco Mode	<ul style="list-style-type: none"><li>• Better fuel efficiency</li></ul>
Breaker Mode	<ul style="list-style-type: none"><li>• Sets pump flow to optimal level and boosts efficiency</li></ul>



### EFFICIENT COMBINED OPERATION

Inbuilt flow summation system and Swing priority function leads to faster swing cycle results in excellent output



### BEST-IN-CLASS TRAVEL PERFORMANCE

- Higher traction force
  - Dual travel option
  - High maneuverability
- Traction Force : 21100 kgf**



### DIGGING FORCES

Higher output even in tough working conditions

- Bucket - 15800 kgf
- Arm - 12600 kgf

# FUEL EFFICIENCY



## IMPROVED FUEL EFFICIENCY

Advanced CAPO System, Newly Designed CMCU, Power & Working Mode options results in excellent fuel efficiency.

## FUEL SAVING KIT

- Monitor undue load and cut down losses.
- Provides better fuel efficiency

## NEGATIVE FLOW CONTROL

Optimum balance between pump and engine output for better fuel efficiency



## ARM REGENERATION SYSTEM

- Smooth Operation
- Prevent Cavitation
- Increased Performance & Fuel Efficiency

## ONE TOUCH IDLE & AUTO DECELERATION

Prevents fuel losses by reducing engine rpm during no-load condition

## EXCLUSIVE BREAKER MODE

Excellent fuel saving due to exclusive power for breaker operation



NEW ECO MODE

MULTI LANGUAGE

MOBILE CHARGING POINT

## INSTRUMENT PANEL

The user-friendly multi language option cluster making it easy to check all critical systems like

- Hydraulic oil temperature,
- Coolant temperature
- Fuel level
- Self diagnostic checks
- Maintenance management

to optimizing productivity needs ensuring fuel efficiency

# OPERATOR COMFORT

## OPERATOR DELIGHT

More space, better visibility, powerful air-conditioning and adjustable fully suspension seat, easy to access controls ensure that the operator can work for longer hours without stress or fatigue in the comfortable and safe working environment.

360 degree visibility, fully open sunroof, added side lamp & mirror ensure comfortable, safe working environment.



## OPERATOR SEAT

- Easily adjustable fully suspension seat with adjustable arm rest
- Operator seat belt



## LED LAMP NEW



## SPACIOUS CABIN

- More head room, large space, large door for easy entry and exit



## REMOVABLE TYPE FLOOR MAT

## AIR CONDITIONER

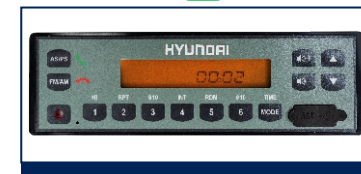
- High Performance Air Conditioner
- Improved AC Ducting
- Water Bottle Cooling System

## SUN VISOR (OPTIONAL)



- AC Front Vent
- Hour Meter
- 24V Socket

## INTEGRATED AUDIO SYSTEM WITH BLUETOOTH NEW





# RELIABILITY



## REINFORCED FRONT STRUCTURE

Use of specialized advance steel plates and reinforced design for higher strength and durability

## HEAVY DUTY BUCKET WITH STUB ADAPTER **NEW**

## ULTIMATE RELIABILITY



Reinforced idler frame



Lower frame belly guard



1 pc cast H link



Reinforced bucket link



HD TRACK LINK



ROCK GUARD

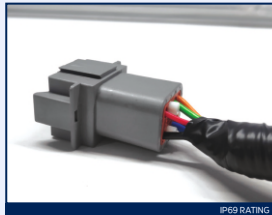


TANK SAFETY COVER



## SWING & TRAVEL SYSTEM

Highly efficient Hyundai designed swing and travel system ensure maximum reliability and performance.



## RELIABLE ELECTRICALS

- Dust and water proof connectors
- Longer component life



## AIR PRE-CLEANER **NEW**

- Removes dirt and Debris from air before entering air filter
- Improves air filter life
- Low maintenance cost



## RUGGED UNDERCARRIAGE

X frame provides excellent resistance to torsional bending to enhance structure life

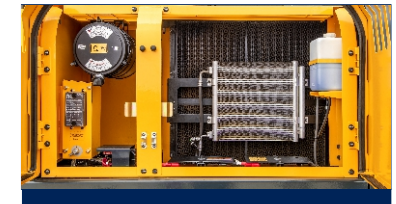
# SERVICEABILITY

## LEADING SERVICE INTERVAL

More efficient cooling system which extend service intervals , minimize operating cost and reduce machine down time.

## CHANGE INTERVAL

Hydraulic oil	5000 hrs
Hydraulic filter	1000 hrs
Engine oil	500 hrs
Engine Filter	500 hrs



## IMPROVED COOLING EFFICIENCY

- Radiator and oil cooler are arranged side by side to maximize efficiency
- Easily accessible from ground level to clean



## LARGE LCD MONITOR

Operator can check the machine's vital signs without any difficulties

- **Maintenance Management**  
Proactive maintenance
- **Self Diagnostic**  
Reduces down time
- **Warning Indicator**  
Ensures safe working

## HINGED TYPE FRONT GLASS GUARD FOR EASY CLEANING

## EASY ACCESSIBILITY

Easy access for maintenance means regular checks get done faster. Hyundai's SMART XPLUS machines feature easy service access to increase uptime and reduce operating costs.

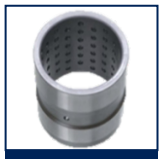
## DURABLE MOUNTING PIN BUSH



## FUEL FILLER PUMP **NEW**



## DIMPLE BUSH **NEW**



# SAFETY

## SAFETY - PEACE OF MIND AND OPERATOR CONFIDENCE

Cabin is integrally welded with low-stress using high strength steel to provide enhanced protection. Handrails and steps are provided for easy operation. Engine fan guard avoid chances of accidental injury.



### COUNTER BALANCE VALVE

Works as a hydrostatic brake and prevents machine against accidental roll down in steep gradients.



### BOOM & ARM HOLDING SYSTEM

Prevent attachments from drifting against gravity due to prolonged overhanging.



### ANTI RESTART FUNCTION

Prevents starter from damage during engine operation



### BATTERY DISCONNECT SWITCH

Cut off power during maintenance and protect batteries from excessive drain



### AUTO ENGINE OVERHEAT PREVENTION

Auto Deceleration with activation of engine overheat warning to avoid catastrophic failure



### EMERGENCY SHUTDOWN SWITCH NEW

Stop the excavator's operation in case of an emergency



### TURBOCHARGE GUARD NEW

Safety During Maintenance



### GREASE NIPPLE WITH CAP NEW



### POSITIVE LOCKING CLAMP NEW



### FIRE EXTINGUISHER NEW

# PARTS & SUPPORT

## HYUNDAI GENUINE PARTS

Developed in synergy with our machines, Hyundai parts and lubricants ensure that you get the high levels of performance, reliability and safety that come with the complete Hyundai experience. Enjoy the confidence and assurance of the most stringent testing procedures and the high quality manufacturing processes safeguarding your machine's health. Experience the versatility of our 200+ strong outlet network across India.

### WHY RISK IT?

Maximize profits and extend your machine's life.



## BENEFITS OF USING GENUINE HYUNDAI PARTS AND LUBRICANTS

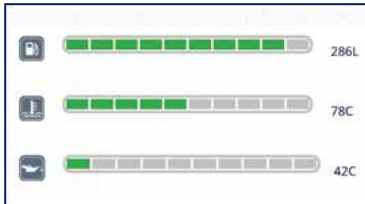
- Genuine Hyundai Parts meet strict specifications and standards in Chemistry, Microstructure and Tensile Strength.
- Benefit from the continuous improvements and advancements made by Hyundai's technical team
- Improved performance of hydraulics and engine components
- Enjoy greater productivity with higher uptime
- Higher resale values
- Reduced oil consumption and unexpected breakdowns
- Enhanced component life





# HI-TRACK

Our unique Remote Management System allows customers to access machine operating information & obtain service & maintenance alerts at the touch of a button



## PROACTIVE MAINTENANCE

Access your machines service & maintenance history with the utmost convenience. Plan your service schedules intelligently with our regular reminders.



## ALARMS

Get notified of system alarms & protect your machine from critical faults & experience repairs.



## INCREASED PRODUCTIVITY

Remote management system empowers you to enhance the efficiency of your operations. Make better decision by comparing the machine's operating time with its travelling idling & breaker use duration.

## CONVENIENT & EASY MONITORING

Enjoy round the clock and on the move access to your machine information through the website or mobile app.



MULTILINGUAL USER INTERFACE **NEW**

IMPROVED DATA CONNECTIVITY **NEW**

## SECURITY & FLEET MONITORING

Protect your machine from theft or unauthorized use. GPS features allows you to create a geo-fence & alerts you if the machine moves out of the defined boundary.

# SPECIFICATION

## Engine

Maker/Model		Cummins6BTAA-5.9C	
Rated flywheel horse power	SAE J1995 (Gross) J1349 (Net)	148HP (110KW) @2000rpm 145HP (108KW) @2000rpm	
Max Torque Displacement		63.7kgf.m(461 lb.ft) @1300rpm 5880cc	

## Hydraulic System

Main pump	
Type	Two variable displacement piston pumps
Max. flow	2x220 lpm
Sub-pump for pilot circuit	Gear pump
Cross-sensing & fuel saving pump system	

## Hydraulic Motors

Travel	Two speed axis piston motor with counter balance valve and parking brake
Swing	Axis piston motor with automatic brake

## Relief Valve Settings

Implement Circuit	330kgf/cm <sup>2</sup>
Travel	330kgf/cm <sup>2</sup>
Swing Circuit	240kgf/cm <sup>2</sup>
Pilot Circuit	35kgf/cm <sup>2</sup>
Service valve	Installed

## Coolant & Lubricant Capacity

REFILLING	LITER
Fuel tank	340
Engine coolant	35
Engine oil	21
Swing device	5
Final drive (each)	6,0
Hydraulic system / Hydraulic tank	280 /150

## Drives & Brakes

Drive method	Fully hydrostatic type
Drive motor	Axis piston motor in-shoe design
Reduction system	Planetary reduction gear
Max.drawbar pull	21100kgf (46500 lbf)
Max.travel speed (high/low)	5.3kmph/3.4kmph
Gradeability	35 Degree (70%)
Parking brake	Multi wet disc

## Undercarriage

X-Leg type centre frame is integrally welded with reinforced box section track frames. The undercarriage includes lubricated rollers, idlers, track adjusters with shock absorbing spring and sprockets and trackchain with triple grouse shoes.

Centre frame	X-leg type
Track frame	Pentagonal box type
No. of shoes on each side	49
No. of carrier rollers each side	2
No. of track rollers each side	9
No. of rail guard each side	2

## Swing System

Swing motor	Axis piston motor
Swing reduction	Planetary gear reduction
Swing bearing lubrication	Grease bathed
Swing brake	Multi wet disc
Swing speed	11 rpm

## Operating Weight

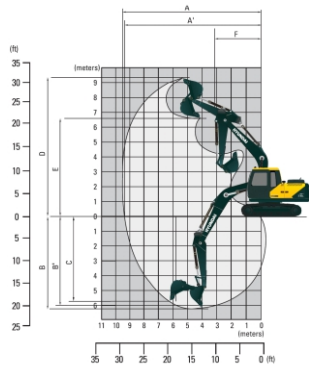
Shoe Width mm (in)	Operating weight kg (lb)	Ground pressure kgf/cm <sup>2</sup> (psi)
600 mm (24")	22,200 (48,943)	0,47 (6.68)

## Dimensions

	(mm)
A	Tumbler distance 3640
B	Overall distance of crawler 4440
C	Ground clearance of counter weight 1060
D	Tail swing radius 2845
D'	Rear-end length 2770
E	Overall width of upper structure 2700
F	Overall height of cabin 2920
G	Min. ground clearance 480
H	Track gauge 2390
I	Overall length 9610
J	Overall height of boom 3210
K	Track shoe width 600
L	Overall width 2990

# SPECIFICATION

Working Ranges		(mm)		
Arm length		2000	*2400	2920
A	Max. digging reach	9,099 (29'10")	9,474 (31'1")	9,950 (32'8")
A'	Max. digging reach on ground	8,926 (29'3")	9,309 (30'7")	9,793 (32'2")
B	Max. digging depth	5,820 (19'1")	6,220 (20'5")	6,740 (22'1")
B'	Max. diggign depth(8ft level)	5,579 (18'4")	6,012 (19'9")	6,560 (21'6")
C	Max. Vertical wall digging depth	4,879 (16'0")	5,276 (17'4")	5,912 (19'5")
D	Max. digging height	9,050 (29'8")	9,266 (30'5")	9,522 (31'3")
E	Max. dumping height	6,275 (20'7")	6,490 (21'4")	6,730 (22'1")
F	Min. swing radius	3,776 (12'5")	3,658 (12'0")	3,673 (12'1")



Bucket Digging Force 15800 kgf  
Arm Crowd Force (2.4 m ) 12600 kgf

## BUCKETS

All buckets are welded with high-strength steel.



Capacity - M3			Width - mm	Weight - kg	Tooth EA	Recommendation		
						5.68m Boom		
						3.8T CWT		
Bucket Type	SAE Heaped	CECE heaped				2.0m Arm	2.4m Arm	2.92m Arm
GP	0.92	0.81	1032	738	5	●	●	●
GP	1.05	0.88	1132	803	5	●	●	●
GP	1.20	0.92	1283	802	5	■	■	■
HD	0.87	1.05	966	982	5	●	●	●
HD	0.95	0.76	1091	1063	5	●	●	●
HD	1.10	0.81	1256	1127	5	●	●	■
COAL	1.70	0.83	1431	908	5	▲	▲	▲

- : Applicable for materials with density of ≤ 2,000 kg/m<sup>3</sup>
- : Applicable for materials with density of ≤ 1,600 kg/m<sup>3</sup>
- ▲ : Applicable for materials with density of ≤ 1,100 kg/m<sup>3</sup>

# SPECIFICATION

## ATTACHMENT

Boom and arms are welded with a low-stress, full-box section design 5.68m (18' 8") mono boom and 2.4m (7' 10"), 2.92m (9' 7") Arms available. Buckets are all-welded, high-strength steel equipments.

## DIGGING FORCE

Arm	Length	mm(ft.in)	2,000(6'7")	*2400(7'10")	2920(9'7")
	Weight	kg(lbs)	614(1354)	718(1583)	735(1620)
Bucket Digging Force	SAE	kN	134	134	134
		kgf	13,700	13,700	13,700
		lbf	30,100	30,100	30,100
	ISO	kN	155	155	155
		kgf	15,800	15,800	15,800
		lbf	34,900	34,900	34,900
Arm Crowd Force	SAE	kN	140	118	99
		kgf	14,300	12,000	10,100
		lbf	31,500	26,500	22,300
	ISO	kN	148	124	104
		kgf	15,100	12,600	10,600
		lbf	33,300	27,700	23,300

\*Standard arm



# LIFTING CAPACITIES

## LIFTING CAPACITIES R215L SMART PLUS





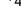

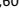
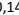






Rating over-front



Rating over-side

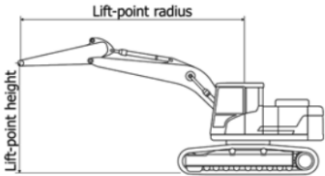
Boom type	Length[mm]	Arm type		Length[mm]		BK type		Capa.[m]		CWT[kg]		Shoe(wheel)[mm]	
HD	5680	GP		2000		HD		1.10		3800		600	
Lift-point height (m/ft)		Lift-point radius								At max. reach			
		3.0m (9.8ft)		4.5m (14.8ft)		6.0m (19.7ft)		7.5m (24.6ft)		Capacity		Reach	
												m(ft)	
7.5m	kg										*5,300	*5,300	4.94
24.6ft	lb										*11,680	*11,680	(16.2)
6.0m	kg						*5,030	4,570			*5,090	4,170	6.32
19.7ft	lb						*11,090	10,080			*11,220	9,190	(20.7)
4.5m	kg			*6,320	*6,320	*5,330	4,440				*5,110	3,360	7.12
14.8ft	lb			*13,930	*13,930	*11,750	9,790				*11,270	7,410	(23.4)
3.0m	kg					*5,990	4,210	5,190	3,010	5,150	2,990	7.54	
9.8ft	lb					*13,210	9,280	11,440	6,640	11,350	6,590	(24.7)	
1.5m	kg					*6,660	4,000	5,100	2,930	4,960	2,850	7.64	
4.9ft	lb					*14,680	8,820	11,240	6,460	10,930	6,280	(25.1)	
0.0m	kg			*9,670	5,740	6,970	3,870			5,110	2,910	7.44	
0.0ft	lb			*21,320	12,650	15,370	8,530			11,270	6,420	(24.4)	
-1.5m	kg			*9,420	5,750	6,940	3,850			5,690	3,220	6.90	
-4.9ft	lb			*20,770	12,680	15,300	8,490			12,540	7,100	(22.6)	
-3.0m	kg	*11,430	11,310	*8,430	5,880					*6,110	4,030	5.95	
-9.8ft	lb	*25,200	24,930	*18,580	12,960					*13,470	8,880	(19.5)	
-4.5m	kg												
-14.8ft	lb												

Boom type	Length[mm]	Arm type		Length[mm]		BK type		Capa.[m]		CWT[kg]		Shoe(wheel)[mm]		
HD	5680	GP		2400		HD		1.10		3800		600		
Lift-point height (m/ft)		Lift-point radius								At max. reach				
		3.0m (9.8ft)		4.5m (14.8ft)		6.0m (19.7ft)		7.5m (24.6ft)		Capacity		Reach		
														m(ft)
7.5m	kg											*4,810	*4,810	5.51
24.6ft	lb											*10,600	*10,600	(18.1)
6.0m	kg						*4,600	*4,600				*4,700	3,730	6.77
19.7ft	lb						*10,140	*10,140				*10,360	8,220	(22.2)
4.5m	kg				*5,800	*5,800	*4,980	4,470	*4,740	3,080		*4,740	3,070	7.52
14.8ft	lb				*12,790	*12,790	*10,980	9,850	*10,450	6,790		*10,450	6,670	(24.7)
3.0m	kg				*7,420	6,400	*5,690	4,220	*4,950	3,000		4,760	2,740	7.92
9.8ft	lb				*16,360	14,110	*12,540	9,300	*10,910	6,610		10,490	6,040	(26.0)
1.5m	kg				*8,860	5,910	*6,410	3,980	5,070	2,900		4,590	2,620	8.02
4.9ft	lb				*19,530	13,030	*14,130	8,770	11,180	6,390		10,120	5,780	(26.3)
0.0m	kg				*9,530	5,680	*6,900	3,830	4,990	2,820		4,700	2,670	7.82
0.0ft	lb				*21,010	12,520	*15,210	8,440	11,000	6,220		10,360	5,890	(25.7)
-1.5m	kg		*9,940	*9,940	*9,470	5,650	6,870	3,780				5,170	2,920	7.32
-4.9ft	lb		*21,910	*21,910	*20,880	12,460	15,150	8,330				11,400	6,440	(24.0)
-3.0m	kg		*12,200	11,070	*8,730	5,750	*6,400	3,850				*5,780	3,540	6.42
-9.8ft	lb		*26,900	24,410	*19,250	12,680	*14,110	8,490				*12,740	7,800	(21.1)
-4.5m	kg		*9,370	*9,370	*6,640	6,050						*5,820	5,350	4.93
-14.8ft	lb		*20,660	*20,660	*14,640	13,340						*12,830	11,790	(16.2)

# LIFTING CAPACITIES

boom type	Length[mm]	Arm type		Length[mm]		BK type		Capa.[rl]		CWT[kg]		Shoe(wheel)[mm]		
HD	5680	GP		2920		HD		1.10		3800		600		
Lift-point height (m/ft)		Lift-point radius											At max. reach	
		1.5m (4.9ft)		3.0m (9.8ft)		4.5m (14.8ft)		6.0m (19.7ft)		7.5m (24.6ft)		Capacity		Reach
														m(ft)
7.5m	kg							*4,230	*4,230			*3,580	*3,580	6.19
24.6ft	lb							*9,330	*9,330			*7,890	*7,890	(20.3)
6.0m	kg							*4,120	*4,120			*3,300	*3,300	7.33
19.7ft	lb							*9,080	*9,080			*7,280	*7,280	(24.0)
4.5m	kg							*4,570	4,550	*4,340	3,150	*3,220	2,780	8.03
14.8ft	lb							*10,080	10,030	*9,570	6,940	*7,100	6,130	(26.3)
3.0m	kg					*6,800	6,590	*5,330	4,300	*4,660	3,040	*3,290	2,510	8.40
9.8ft	lb					*14,990	14,530	*11,750	9,480	*10,270	6,700	*7,250	5,530	(27.6)
1.5m	kg					*8,410	6,040	*6,140	4,040	5,070	2,920	*3,480	2,400	8.49
4.9ft	lb					*18,540	13,320	*13,540	8,910	11,180	6,440	*7,670	5,290	(27.9)
0.0m	kg					*9,350	5,740	*6,750	3,850	4,990	2,820	*3,860	2,430	8.31
0.0ft	lb					*20,610	12,650	*14,880	8,490	11,000	6,220	*8,510	5,360	(27.3)
-1.5m	kg	*5,930	*5,930	*9,670	*9,670	*9,560	5,640	6,850	3,760	4,950	2,780	*4,520	2,630	7.84
-4.9ft	lb	*13,070	*13,070	*21,320	*21,320	*21,080	12,430	15,100	8,290	10,910	6,130	*9,960	5,800	(25.7)
-3.0m	kg	*10,410	*10,410	*13,140	*10,930	*9,090	5,690	*6,700	3,790			*5,430	3,100	7.01
-9.8ft	lb	*22,950	*22,950	*28,970	*24,100	*20,040	12,540	*14,770	8,360			*11,970	6,830	(23.0)
-4.5m	kg			*10,810	*10,810	*7,620	5,900					*5,650	4,290	5.68
-14.8ft	lb			*23,830	*23,830	*16,800	13,010					*12,460	9,460	(18.6)

- Notes:
1. Lifting capacity are based on ISO 10567.
  2. Lifting capacity of the Robex Series does not exceed 75% of tipping load with the machine on firm, level ground or 87% of full hydraulic capacity.
  3. The Lift-point is bucket pivot mounting pin on the arm(without bucket mass).
  4. (\*) indicates load limited by hydraulic capacity.



# STANDARD OPTIONAL LIST

## Standard Equipment

ISO Standard Cabin  
All-weather Steel Cab with All-around Visibility  
Safety Glass Windows  
Sliding Fold-in Front Window  
Sliding Side Window  
Air-conditioner  
Accessory Box

## Computer Aided Power Optimization (New CAPO) system

3-power Mode, 2-work Mode  
Auto Deceleration & One Touch Deceleration System  
Auto Engine Overheat Prevention System  
Self Diagnostic System  
Centralized Monitoring  
LCD Display  
Engine Speed  
Clock & Error Code  
Mobile Charging Point  
Fuel Level Indicator  
Engine Coolant Temperature Indicator  
Hyd. Oil Temperature Indicator

## Warning

Fuel Level  
Engine Oil Pressure  
Engine Coolant Temperature  
Hyd. Oil Temperature  
Low Battery  
Air Cleaner Clogging  
Door and Cab Locks, One Key  
One Outside Rearview Mirror  
Dual Channel Fully Adjustable Suspension Seat  
Slidable Joystick Pilot-operated  
Two Front Working Lights and Two Cabin Work Lights  
LED Working Lamps  
Cyclonic Pre Air Cleaner  
Removable Type Floor Mat  
Electric Horn  
Battires ( 2 x 12Vx 100AH )  
Battery Master Switch  
Removable Clean out Screen for Oil Cooler  
Automatic Swing Brake  
Removable Reservoir Tank  
Fuel Pre-filter

Boom Holding System  
Arm Holding System  
Counter Weight (3800 kg)  
Bluetooth FM Radio/USB player  
24V Power Socket  
Mono Boom (5.68m, 18'8")  
Arm (2.4m, 7'10")  
Standard Bucket (1.1 HD m<sup>3</sup>)  
Track Shoes (600mm, 24")  
Track Rail Guard  
Cabin Front Protector  
Operator Kit  
Tool Kit  
Remote Management System (Hi-Track)  
Fuel Refilling Pump

## Optional Equipment

Sun Visor for Cabin Inside  
Beacon Lamp  
Single Acting Piping Kit  
Travel Alarm  
Operator Seat Belt  
Emergency Shutdown Switch  
Cabin Top Guard  
Swing Lock  
Fire Extinguisher  
12 mm HD Track Chain  
**Various Optional Arms**  
Arm (2.0 m)  
Arm (2.92 m)  
**Various Optional Buckets & Attachments**  
Light Duty Bucket (1.20 m<sup>3</sup>)  
Heavy Duty Bucket (0.95 m<sup>3</sup>)  
Heavy Duty Bucket (0.87 m<sup>3</sup>)  
General Purpose Bucket (0.92m<sup>3</sup>)  
General Purpose Bucket (1.05 m<sup>3</sup>)  
Coal Bucket (1.7 m<sup>3</sup>)  
Rock Breaker  
Clamshell Bucket  
Quick Coupler  
Orange Grapple

# NOTES