

Dealer

Disclaimer: All the locations marked on the map are of dealers head offices

# R210 SMART X PLUS



\* Design aesthetics & features may vary from actual

HD Hyundai Construction Equipment India Pvt. Ltd.

**Factory Location**

Plot No. A-2, M.I.D.C. Chakan, Phase II,  
Village: Khalumbre, Taluka: Khed, Dist: Pune-410501  
E mail: [hyundai.care@theconnectionsindia.com](mailto:hyundai.care@theconnectionsindia.com)  
Toll Free No.: 1800 209 8600

**Please Contact**

@hd-hyundai.com   
 @hdhyundaiindia   
 @HDHyundaiCEIndia   
 @HDHyundaiCEIndia   
 @HyundaiCEIndia

Scan the QR code  
with your phone  
camera & visit



SEP 2023

OPERATING WEIGHT: 21200 kgs

GROSS POWER : 140 HP @ 2000 rpm

BUCKET CAPACITY: 0.87 - 15 m<sup>3</sup>

# DESIGNED FOR SMART WORK

## R210 SMART X PLUS

### BEST-IN-CLASS PERFORMANCE

- Cyclonic Air Precleaner **NEW**
- Wide Range of Bucket **NEW**
- Advanced CAPO System
- Hydraulic Flow Summation
- Swing Priority
- Regeneration System
- Excellent Digging Forces

### OPERATOR COMFORT

- Bluetooth FM Radio **NEW**
- Removable Type Floor Mat **NEW**
- LED Working Lamps **NEW**
- Spacious Cabin
- Fully Adjustable Seat
- Enhanced Visibility
- User-friendly Functionality

### INCREASED MACHINE DURABILITY

- Superior Lubrication and Wear Protection **NEW**
- Polymer Shim **NEW**
- Stub Adapter **NEW**
- Strengthened Undercarriage
- Proven Upper Structure
- Forged Ring Body
- Reinforced Front Attachment



### IMPROVED FUEL EFFICIENCY

- New ECO Mode
- Fuel Saving Kit
- Electro Hydraulic System
- Auto Deceleration System
- Efficient Breaker Mode

### SIMPLIFIED MAINTENANCE

- Fuel Filler Pump\* **NEW**
- Easy Serviceability
- Extended Maintenance
- Large Capacity Fluid Tank
- Low Life Cycle Cost

### PARTS & SUPPORT

- Remote Management System (Hi-Track)
- Hyundai Genuine Parts
- Max Parts Availability
- On-Site Product Support

### ENHANCED SAFETY

- Emergency Shutdown Switch\* **NEW**
- Turbocharge Guard **NEW**
- Cabin Top Guard\* **NEW**
- Beacon Lamp\* **NEW**
- Swing Lock\* **NEW**
- Seat Belt\*

( \* Optional )



# PERFORMANCE

## PRIDE AT WORK

Hyundai construction equipment strives to build state-of-the art earthmoving equipment to give every operator maximum performance, more precision, versatile machine preferences, and proven quality. New technologies designed to improve performance and precision, make the Hyundai excavator smooth, fast and easy to control. Take pride in your work with Hyundai!



## ENGINE

The water cooled, 4 cycle diesel, 6 cylinder in line, direct injection turbocharged engine is built for power, reliability, efficiency.

The engine is manufactured to perform in wide range of heat, humidity and dust conditions without compromising on productivity.



# R210 SMART X PLUS



## HYDRAULIC SYSTEM

Electro Hydraulic Control System provides wide range of flow at various workloads for paramount productivity. Open center design of Main Control Valve (MCV) ensures fast response and maximum efficiency in tough conditions.

## CHOICE OF OPERATING MODE

Working Mode	Advantage
P Mode	<ul style="list-style-type: none"><li>• Maximum Power</li><li>• Fast Cycle time</li></ul>
S Mode	<ul style="list-style-type: none"><li>• Balance between power and fuel efficiency</li></ul>
Eco Mode	<ul style="list-style-type: none"><li>• Better fuel efficiency</li></ul>
Breaker Mode	<ul style="list-style-type: none"><li>• Sets pump flow to optimal level and boosts efficiency</li></ul>

## BEST-IN-CLASS DIGGING FORCES

Higher output even in tough working conditions

- Bucket -16200 kgf
- Arm - 12700 kgf



## BEST-IN-CLASS TRAVEL PERFORMANCE

- Higher Traction Force
- Dual Travel Option
- High Maneuverability

Traction Force : 21100 kgf

## EFFICIENT COMBINED OPERATION

Inbuild **Flow Summation** system and **Swing Priority** function leads to faster swing cycle results in excellent output

# FUEL EFFICIENCY



## IMPROVED FUEL EFFICIENCY

Advanced CAPO System, Newly Designed CMCU, Power & Working Mode options results in excellent fuel efficiency.

## FUEL SAVING KIT

- Monitor undue load and cut down losses.
- Provides better fuel efficiency

## NEGATIVE FLOW CONTROL

Optimum balance between pump and engine output for better fuel efficiency



## ONE TOUCH IDLE & AUTO DECELERATION

Prevents fuel losses by reducing engine rpm during no-load condition

## EXCLUSIVE BREAKER MODE

Excellent fuel saving due to exclusive power for breaker operation



## ARM REGENERATION SYSTEM

- Smooth Operation
- Prevent Cavitation
- Increased Performance & Fuel Efficiency



## INSTRUMENT PANEL

The user-friendly multi language option cluster making it easy to check all critical systems like

- Hydraulic oil temperature,
  - Coolant temperature
  - Fuel level
  - Self diagnostic checks
  - Maintenance management
- to optimizing productivity needs ensuring fuel efficiency

# OPERATOR COMFORT

## OPERATOR DELIGHT

More space, better visibility, powerful air-conditioning and adjustable fully suspension seat, easy to access controls ensure that the operator can work for longer hours without stress or fatigue in the comfortable and safe working environment.

360 degree visibility, fully open sunroof, added side lamp & mirror ensure comfortable, safe working environment.



## OPERATOR SEAT

- Easily adjustable fully suspension seat with adjustable arm rest
- Operator seat belt



## LED LAMP



## SPACIOUS CABIN

- More head room, large space, large door for easy entry and exit

## AIR CONDITIONER

- High Performance Air Conditioner
- Improved AC Ducting
- Water Bottle Cooling System

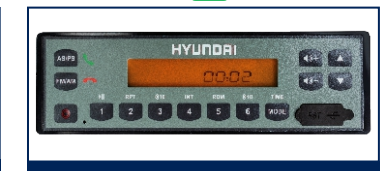
## SUN VISOR (OPTIONAL)



## REMOVABLE TYPE FLOOR MAT



## INTEGRATED AUDIO SYSTEM WITH BLUETOOTH





# RELIABILITY



## REINFORCED FRONT ATTACHMENTS

Use of specialized advance steel plates and reinforced design for higher strength and durability

## HEAVY DUTY BUCKET WITH STUB ADAPTER **NEW**

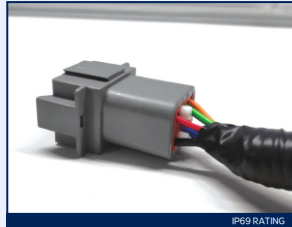
## RUGGED UNDERCARRIAGE

X frame provides excellent resistance to torsional bending to enhance structure life



## RELIABLE ELECTRICALS

- Dust and water proof connectors
- Longer component life



## SWING & TRAVEL SYSTEM

Highly efficient Hyundai designed Swing and Travel system ensure maximum reliability and performance.



## REINFORCED IDLER FRAME



## LOWER FRAME BELLY GUARD



## AIR PRE-CLEANER **NEW**

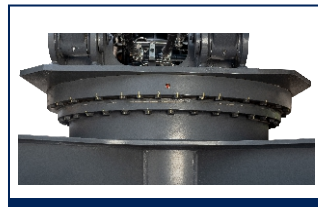
- Improves engine performance
- Removes dirt and debris from air before entering air filter
- Improves air filter life
- Low maintenance cost



## CASTED BUCKET CONTROL LINK



## FORGED RING BODY



# SERVICEABILITY

## LEADING SERVICE INTERVAL

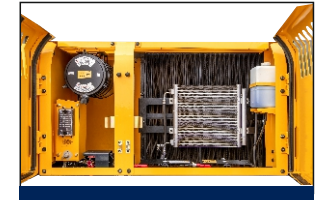
More efficient cooling system which extend service intervals, minimize operating cost and reduce machine down time.

### CHANGE INTERVAL

Hydraulic Oil	5000 hrs
Hydraulic Filter	1000 hrs
Engine Oil	500 hrs
Engine Filter	500 hrs

## IMPROVED COOLING EFFICIENCY

- Radiator and oil cooler are arranged side by side to maximize efficiency
- Easily accessible from ground level to clean



## LARGE LCD MONITOR

Operator can check the machine's vital signs without any difficulties

- **Maintenance Management**  
Proactive maintenance
- **Self Diagnostic**  
Reduces down time
- **Warning Indicator**  
Ensures safe working



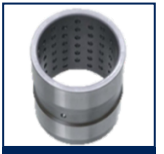
## DURABLE MOUNTING PIN BUSH



## FUEL FILLER PUMP **NEW**



## DIMPLE BUSH **NEW**



## HINGED TYPE FRONT GLASS GUARD FOR EASY CLEANING

## EASY ACCESSIBILITY

Easy access for maintenance means regular checks get done faster. Hyundai's SMARTX PLUS machines feature easy service access to increase uptime and reduce operating costs.



# SAFETY

## SAFETY - PEACE OF MIND AND OPERATOR CONVENIENCE

Cabin is integrally welded with low-stress using high strength steel to provide enhanced protection. Handrails and steps are provided for easy operation. Engine fan guard avoid chances of accidental injury.



### COUNTER BALANCE VALVE

Works as a hydrostatic brake and prevents machine against accidental roll down in steep gradients.



### BOOM & ARM HOLDING SYSTEM

Prevent attachments from drifting against gravity due to prolonged overhanging.



### ANTI RESTART FUNCTION

Prevents starter from damage during engine operation.

### AUTO ENGINE OVERHEAT & WARM UP FUNCTION



### BATTERY DISCONNECT SWITCH



### LOWER BELLY GUARD



### GREASE NIPPLE WITH CAP NEW



### POSITIVE LOCKING CLAMP NEW



### TANK SAFETY COVER



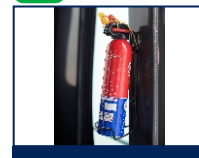
### TURBOCHARGE GUARD NEW



### EMERGENCY SHUTDOWN SWITCH NEW



### FIRE EXTINGUISHER NEW



# PARTS & SUPPORT

## HYUNDAI GENUINE PARTS

Developed in synergy with our machines, Hyundai parts and lubricants ensure that you get the high levels of performance, reliability and safety that come with the complete Hyundai experience. Enjoy the confidence and assurance of the most stringent testing procedures and the high quality manufacturing processes safeguarding your machine's health. Experience the versatility of our 200+ strong outlet network across India.

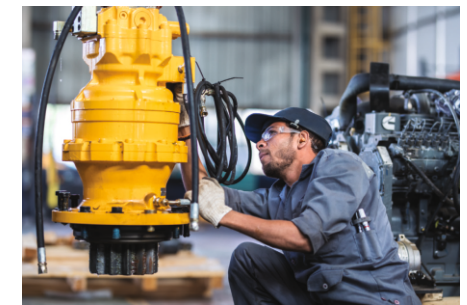
### WHY RISK IT?

Maximize profits and extend your machine's life.



## BENEFITS OF USING GENUINE HYUNDAI PARTS AND LUBRICANTS

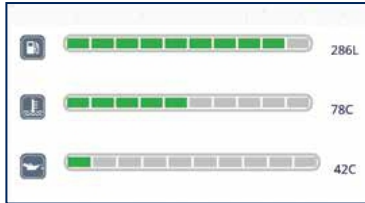
- Genuine Hyundai Parts meet strict specifications and standards in Chemistry, Microstructure and Tensile Strength.
- Benefit from the continuous improvements and advancements made by Hyundai's technical team.
- Improved performance of hydraulics and engine components.
- Enjoy greater productivity with higher uptime
- Higher resale values.
- Reduced oil consumption and unexpected breakdowns.
- Enhanced component life.





# HI-TRACK

Our unique remote management system allows customers to access machine operating information & obtain service & maintenance alerts at the touch of a button



## PROACTIVE MAINTENANCE

Access your machines service & maintenance history with the utmost convenience. Plan your service schedules intelligently with our regular reminders.



## ALARMS

Get notified of system alarms & protect your machine from critical faults & experience repairs.



## INCREASED PRODUCTIVITY

Remote management system empowers you to enhance the efficiency of your operations. Make better decision by comparing the machine's operating time with its travelling idling & breaker use duration.

## CONVENIENT & EASY MONITORING

Enjoy round the clock and on the move access to your machine information through the website or mobile app.



MULTILINGUAL USER INTERFACE **NEW**

IMPROVED DATA CONNECTIVITY **NEW**

## SECURITY & FLEET MONITORING

Protect your machine from theft or unauthorized use. GPS features allows you to create a geo-fence & alerts you if the machine moves out of the defined boundary.

# SPECIFICATION

## Engine

Maker/Model		Cummins6BT5.9-C	
Rated flywheel horse power	SAE	J1995 (Gross) J1349 (Net)	140HP (104KW) @2000rpm 136HP (101KW) @2000rpm
Max Torque Displacement			57.6kgf.m @1600rpm 5880cc

## Hydraulic System

Main pump	
Type	Two variable displacement piston pumps
Max. flow	2x220 lpm
Sub-pump for pilot circuit	Gear pump
Cross-sensing & fuel saving pump system	

## Hydraulic Motors

Travel	Two speed axis piston motor with counter balance valve and parking brake
Swing	Axial piston motor with automatic brake

## Relief Valve Settings

Implement Circuit	330kgf/cm <sup>2</sup>
Travel	330kgf/cm <sup>2</sup>
Swing Circuit	240kgf/cm <sup>2</sup>
Pilot Circuit	35kgf/cm <sup>2</sup>
Service valve	Installed

## Coolant & Lubricant Capacity

REFILLING	LITER
Fuel tank	340
Engine coolant	35
Engine oil	21
Swing device	5
Final drive (each)	6.0
Hydraulic system / Hydraulic tank	280/150

## Drives & Brakes

Drive method	Fully hydrostatic type
Drive motor	Axial piston motor in-shoe design
Reduction system	Planetary reduction gear
Max. drawbar pull	21100kgf (46500 lbf)
Max. travel speed (high/low)	5.3kmph/3.4kmph
Gradeability	35 Degree (70%)
Parking brake	Multi wet disc

## Undercarriage

X-Leg type centre frame is integrally welded with reinforced box section track frames. The undercarriage includes lubricated rollers, idlers, track adjusters with shock absorbing spring and sprockets and trackchain with triple grouse shoes.

Centre frame	X-leg type
Track frame	Pentagonal box type
No. of shoes on each side	46
No. of carrier rollers each side	2
No. of track rollers each side	7
No. of rail guard each side	1

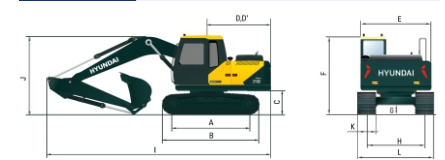
## Swing System

Swing motor	Axial piston motor
Swing reduction	Planetary gear reduction
Swing bearing lubrication	Grease bathed
Swing brake	Multi wet disc
Swing speed	11 rpm

## Operating Weight

Shoe Width mm (in)	Operating weight kg (lb)	Ground pressure kgf/cm <sup>2</sup> (psi)
600 mm (24")	21,200 (46,738)	0.48 (6.83)

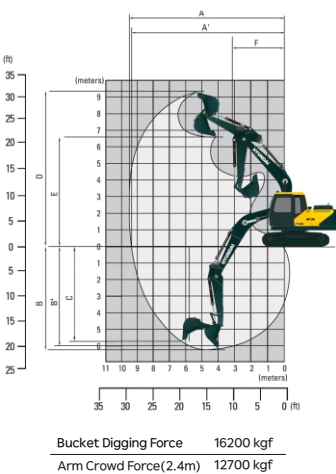
## Dimensions



A	Tumbler distance	3370
B	Overall length of crawler	4160
C	Ground clearance of counter weight	1060
D	Tail swing radius	2845
D'	Rear-end length	2770
E	Overall width of upper structure	2700
F	Overall height of cabin	2920
G	Min. ground clearance	480
H	Track gauge	2200
I	Overall length	9610
J	Overall height of boom	3210
K	Track shoe width	600
L	Overall width	2800

# SPECIFICATION

Working Ranges		(mm)		
Arm length		2000	*2400	2920
A	Max. digging reach	9,090 (29'10")	9,465 (31'1")	9,941 (32'7")
A'	Max. digging reach on ground	8,917 (29'3")	9,300 (30'6")	9,784 (32'1")
B	Max. digging depth	5,824 (19'1")	6,224 (20'5")	6,744 (22'2")
B'	Max. diggign depth(8ft level)	5,582 (18'4")	6,015 (19'9")	6,564 (21'6")
C	Max. Vertial wall digging depth	4,752 (15'7")	5,147 (16'11")	5,784 (18'12")
D	Max. digging height	9,012 (29'7")	9,227 (30'3")	9,481 (31'1")
E	Max. dumping height	6,265 (20'7")	6,478 (21'3")	6,716 (22'0")
F	Min. swing radius	3,789 (12'5")	3,680 (12'1")	3,696 (12'2")



## BUCKETS

All buckets are welded with high-strength steel.



Capacity - M³			Width - mm	Weight - kg	Tooth EA	Recommendation		
						5.68m Boom		
Bucket Type	SAE Heaped	CECE heaped				3.8t CWT		
			2.0m Arm	2.4m Arm	2.92m Arm			
GP	0.92	0.81	1032	738	5	●	●	●
GP	1.00	0.88	1116	797	5	■	■	■
HD	0.87	0.76	966	982	5	●	●	■
HD	0.92	0.81	1041	1033	5	●	●	■
Coal	1.50	1.32	1258	854	5	▲	▲	▲

- : Applicable for materials with density of  $\leq 2,000 \text{ kg/m}^3$
- : Applicable for materials with density of  $\leq 1,600 \text{ kg/m}^3$
- ▲ : Applicable for materials with density of  $\leq 1,100 \text{ kg/m}^3$

# SPECIFICATION

## ATTACHMENT

Boom and arm are of all-welded with a low-stress, full-box section desing. 5.68m (18'8" ) mono boom and 2.m (6'7"), 2.4m (7',10") 2.92m(9'7") Arm are available. Buckets are all-welded, high-steel implements.

## DIGGING FORCE

Arm	Length	mm(ft.in)	2,000 (6'7")	*2,400 (7'10")	2,920 (9'7")
	Weight	kg(lbs)	614 (1,354)	718 (1,583)	735 (1,620)
Bucket Digging Force	SAE	kN	135	135	135
		kgf	13,700	13,700	13,700
		lbf	30,300	30,300	30,300
	ISO	kN	159	159	159
		kgf	16,200	16,200	16,200
		lbf	35,700	35,700	35,700
Arm Crowd Force	SAE	kN	141	118	100
		kgf	14,400	12,000	10,200
		lbf	31,700	26,600	22,400
	ISO	kN	149	124	104
		kgf	15,200	12,700	10,600
		lbf	33,500	28,000	23,400

\*Standard arm



# LIFTING CAPACITIES

## LIFTING CAPACITIES R210 SMART PLUS



Rating over-front



Rating over-side

Boom type	Length[mm]	Arm type		Length[mm]	BK type	Capa.[m]	CWT[kg]	Shoe(wheel)[mm]		
GP	5680	GP		2000	HD	0.92	3800	600		
Lift-point height (m/ft)		Lift-point radius						At max. reach		
		3.0m (9.8ft)		4.5m (14.8ft)		6.0m (19.7ft)		7.5m (24.6ft)		Capacity
										Reach
7.5m	kg									*5,280
24.6ft	lb									*11,640
6.0m	kg					*5,010	4,040			*5,070
19.7ft	lb					*11,050	8,910			*11,180
4.5m	kg			*6,300	6,070	*5,310	3,910			4,980
14.8ft	lb			*13,890	13,380	*11,710	8,620			10,980
3.0m	kg					*5,970	3,690	4,500	2,630	4,460
9.8ft	lb					*13,160	8,140	9,920	5,800	9,830
1.5m	kg					6,120	3,490	4,410	2,550	4,290
4.9ft	lb					13,490	7,690	9,720	5,620	9,460
0.0m	kg			9,300	4,970	5,980	3,360			4,410
0.0ft	lb			20,500	10,960	13,180	7,410			9,720
-1.5m	kg			9,320	4,980	5,960	3,350			4,910
-4.9ft	lb			20,550	10,980	13,140	7,390			10,820
-3.0m	kg	*11,430	9,680	*8,420	5,110					*6,090
-9.8ft	lb	*25,200	21,340	*18,560	11,270					*13,430
-4.5m	kg									
-14.8ft	lb									

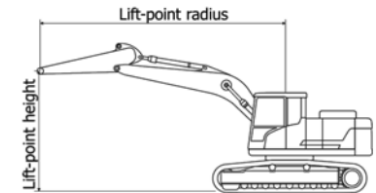
Boom type	Length[mm]	Arm type		Length[mm]	BK type	Capa.[m]	CWT[kg]	Shoe(wheel)[mm]		
GP	5680	GP		2400	HD	0.92	3800	600		
Lift-point height (m/ft)		Lift-point radius						At max. reach		
		3.0m (9.8ft)		4.5m (14.8ft)		6.0m (19.7ft)		7.5m (24.6ft)		Capacity
										Reach
7.5m	kg									*4,790
24.6ft	lb									*10,560
6.0m	kg					*4,570	4,080			*4,670
19.7ft	lb					*10,080	8,990			*10,300
4.5m	kg			*5,750	*5,750	*4,950	3,930	4,580	2,690	4,550
14.8ft	lb			*12,680	*12,680	*10,910	8,660	10,100	5,930	10,030
3.0m	kg			*7,380	5,570	*5,650	3,680	4,490	2,610	4,110
9.8ft	lb			*16,270	12,280	*12,460	8,110	9,900	5,750	9,060
1.5m	kg			*8,820	5,090	6,090	3,450	4,370	2,500	3,950
4.9ft	lb			*19,440	11,220	13,430	7,610	9,630	5,510	8,710
0.0m	kg			9,210	4,880	5,920	3,300	4,290	2,430	4,040
0.0ft	lb			20,300	10,760	13,050	7,280	9,460	5,360	8,910
-1.5m	kg	*9,920	9,220	9,180	4,850	5,860	3,250			4,440
-4.9ft	lb	*21,870	20,330	20,240	10,690	12,920	7,170			9,790
-3.0m	kg	*12,160	9,410	*8,690	4,950	5,950	3,330			5,420
-9.8ft	lb	*26,810	20,750	*19,160	10,910	13,120	7,340			11,950
-4.5m	kg	*9,320	*9,320	*6,590	5,250					*5,780
-14.8ft	lb	*20,550	*20,550	*14,530	11,570					*12,740

# LIFTING CAPACITIES

Boom type	Length[mm]	Arm type		Length[mm]	BK type	Capa.[m]	CWT[kg]	Shoe(wheel)[mm]		
GP	5680	GP		2920	HD	0.92	3800	600		
Lift-point height (m/ft)		Lift-point radius						At max. reach		
		1.5m (4.9ft)		3.0m (9.8ft)		4.5m (14.8ft)		6.0m (19.7ft)		Capacity
										Reach
7.5m	kg							*4,210	4,170	
24.6ft	lb							*9,280	9,190	
6.0m	kg							*4,090	*4,090	
19.7ft	lb							*9,020	*9,020	
4.5m	kg							*4,540	4,020	*4,310
14.8ft	lb							*10,010	8,860	*9,500
3.0m	kg					*6,780	5,780	*5,300	3,770	4,540
9.8ft	lb					*14,950	12,740	*11,680	8,310	10,010
1.5m	kg					*8,390	5,250	*6,120	3,520	4,400
4.9ft	lb					*18,500	11,570	*13,490	7,760	9,700
0.0m	kg					9,310	4,960	5,970	3,340	4,300
0.0ft	lb					20,530	10,930	13,160	7,360	9,480
-1.5m	kg	*5,890	*5,890	*9,640	9,140	9,200	4,870	5,870	3,260	4,260
-4.9ft	lb	*12,990	*12,990	*21,250	20,150	20,280	10,740	12,940	7,190	9,390
-3.0m	kg	*10,380	*10,380	*13,140	9,320	*9,080	4,920	5,900	3,280	
-9.8ft	lb	*22,880	*22,880	*28,970	20,550	*20,020	10,850	13,010	7,230	
-4.5m	kg			*10,800	9,660	*7,600	5,120			
-14.8ft	lb			*23,810	21,300	*16,760	11,290			

Notes:

- Lifting capacity are based on ISO 10567.
- Lifting capacity does not exceed 75% of tipping load with the machine on firm, level ground or 87% of full hydraulic capacity.
- The Lift-point is bucket pivot mounting pin on the arm (without bucket mass).
- (\*) indicates load limited by hydraulic capacity.



# STANDARD OPTIONAL LIST

# NOTES

## Standard Equipment

ISO Standard Cabin  
All-weather Steel Cab with All-around Visibility  
Safety Glass Windows  
Sliding Fold-in Front Window  
Sliding Side Window  
Air-conditioner  
Accessory Box  
Computer Aided Power Optimization  
(New CAPO) system  
3-power Mode, 2-work Mode  
Auto Deceleration & One Touch Deceleration System  
Auto Engine Overheat Prevention System  
Self Diagnostic System  
Centralized Monitoring  
LCD Display  
Engine Speed  
Clock & Error Code  
Mobile Charging Point  
Fuel Level Indicator  
Engine Coolant Temperature Indicator  
Hyd. Oil Temperature Indicator

## Warning

Fuel Level  
Engine Oil Pressure  
Engine Coolant Temperature  
Hyd. Oil Temperature  
Low Battery  
Air Cleaner Clogging  
Door and Cab Locks, One Key  
One Outside Rearview Mirror  
Fully Adjustable Suspension Seat  
Pilot-operated Joystick  
Two Front Working Lights and Two Cabin Work Lights  
LED Working Lamps  
Cyclonic Pre Air Cleaner  
Removable Type Floor Mat  
Electric Horn  
Batteries(2 x 12V x 100AH)  
Battery Master Switch  
Removable Clean Out Screen For Oil Cooler  
Automatic Swing Brake

Removable Reservoir Tank  
24V Power Socket  
Fuel Pre-filter  
Boom Holding System  
Arm Holding System  
Counter Weight(3800 kg)  
Mono Boom (5.68m, 18'8")  
Arm (2.4m, 7'10")  
Standard Bucket (0.92 HD m<sup>3</sup>)  
Track Shoes (600mm, 24")  
Track Rail Guard  
Cabin Front Protector  
Bluetooth FM Radio/USB player  
Operator Kit  
Tool Kit  
Remote Management System (Hi-Track)

## Optional Equipment

Beacon Lamp  
Single Acting Piping Kit  
Fuel Refilling Pump  
Travel Alarm  
Operator Seat Belt  
Emergency Shutdown Switch  
Cabin Top Guard  
Swing Lock  
Fire Extinguisher  
Sun Visor for Cabin Inside  
12 mm HD Track Chain

### Various Optional Arms

Arm (2.0 m)  
Arm (2.92 m)

### Various Optional Bucket & Attachments

General Purpose Bucket (0.92 m<sup>3</sup>)  
Heavy Duty Bucket (0.87 m<sup>3</sup>)  
Coal Bucket (1.5 m<sup>3</sup>)  
General Purpose Bucket (1.00 m<sup>3</sup>)  
Rock Breaker  
Clamshell Bucket  
Quick Coupler  
Orange Grapple