

**HYUNDAI  
HDB SERIES  
ROCK BREAKERS**







# HDB SERIES

## The Best Selection for Your Job!

- ✓ **Powerful Performance**
- ✓ **Advanced Technology**
- ✓ **Exceptional Durability**



### Features for HDB Series Breakers

Choose from different models engineered to fit a wide range of machine sizes and applications. All of them deliver innovative technology and unmatched durability and productivity.





- Larger diameter tie-bolt for high performance and optimum durability
- Inlet/outlet port connecting hoses upgraded from split flange type to new adapter type that helps prevent bolt breakage and oil leakage
- Smart design, including changes to the box housing for extra durability
- Large chisel diameter for increased strength and durability

#### Options:

- Anti-blank firing on/off valve
- TPC system (2-stage stroke valve)
- Provision hold for underwater work
- Auto grease system

## TOOL & OPTION

### Shape of Chisel

Classification	Major Contents	
Moil		Concrete, Rocks, Pavement, Slopes
Wedge		Trench, Slopes, Finishing
Blunt		Quarries
Conical		Concrete, Rocks, Pavement

### Choosing the chisel for Different Rock Types

Classification	Rock	Recommended Breakers	Recommended Chisels
Hard Rock	Basanite, Granite Diabase	HDB145 to HDB500	Blunt type, Wedge type
Soft Rock	Sandstone, Limestone Coal	HDB70 to HDB500	Moil type, Wedge type conical type

### Auto Grease Bracket-Mounted System Advantages

#### Auto Grease Bracket Mounted System

- Automatically greases several times a day
- Eliminates the need for manual greasing
- Contributes to longer tool life, especially for chisels
- No need for extra drive power

Available for breaker models HDB145 TO HDB800



\*Photo may include optional equipment.

# TECHNOLOGY

## Seal System



By using only NOK seals on the HDB series, we have achieved longer seal life.

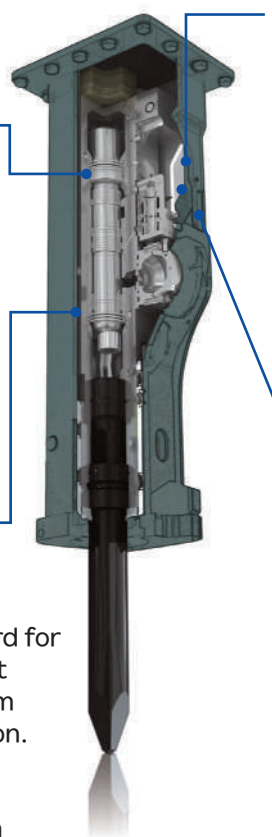
- On models HDB215 and up, an additional square buffer seal increases the durability of the gas seals, step seals, and the piston.
- This buffer seal also helps to minimize piston vibration inside the housing.

## ABF (Anti-Blank Firing) System with Auto-Control valve

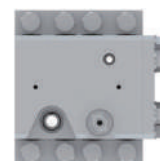


ABF (anti-blank firing), which is standard for Models HDB70 to HDB500, helps protect chisel points, bolts and front heads from blank firing, regardless of the application.

When the auto-control valve is on, the breaker operation automatically starts once there is a small amount of pressure under the chisel and automatically stops when the chisel is lifted after breaking or there is no material below the chisel.

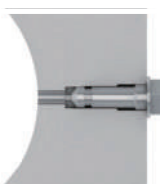


## Valve Case with TPC (Total Power Control) System



- Shortened height of the valve case while increasing the width for added balance.
- Increased the durability of the valve plate by using 6 bolts instead of 4.

## 2 Stroke Selector System



The 2-stroke selector allows users to change from long stroke to short stroke according to the performance needs for their application. On Models HDB215-HDB300, the selector is located on valve case. On Models HDB70 to HDB145 it is located on the cylinder.

### Contents

## NEW HDB SERIES BREAKER - ADDITIONAL FEATURES

Contents	HDB30	HDB70	HDB145	HDB215	HDB230	HDB300	HDB500
Underwater Works	-	●	●	●	●	●	●
Auto Greasing System Hole	-	●	●	●	●	●	●
TPC(Total Power Control) System Selector Type	-	●	●	●	●	●	●
ABF(Anti Blank Firing) System	-	●	●	●	●	●	●
Auto Greasing Unit	-	●	●	●	●	●	●
Central Grease Supply Unit	-	●	●	●	●	●	●
BPM Adjuster	-	-	●	●	●	●	●
Internal Relief Valve	-	-	●	●	●	●	●
TPC(Total Power Control) System Remote Control Type	-	-	●	●	●	●	●
Low Noise Housing Bracket	●	●	●	●	●	●	●

● Standard    ● Optional

## SPECIFICATIONS

## HDB Series Breaker Specifications

Item	Unit	HDB30	HDB70	HDB145	HDB215	HDB230	HDB300	HDB500
Suitable Excavator Weight Class	Ton	2 ~ 4	5 ~ 8	10 ~ 15	18 ~ 25	18 ~ 25	26 ~ 32	40 ~ 50
Operating Weight Class (Top Box BKT.)	kg	180	431	959	1817	1777	2832	3713
Overall Length (w/STD. MTG. BKT)	mm	1334	1805	2263	2841	2764	3200	3595
Overall Length (wo/MTG. BKT)	mm	1184	1591	1962	2472	2395	2790	3173
Chisel Out Dia.	mm	53	78	105	135	140	150	165
Chisel Length	mm	570	806	975	1300	1250	1400	1650
Setting Pressure	Bar	150	180	190	210	210	210	210
Working Pressure	Bar	80 ~ 120	100 ~ 140	120 ~ 160	130 ~ 170	130 ~ 180	140 ~ 180	140 ~ 180
Oil Flow	lpm	25 ~ 45	45 ~ 80	90 ~ 110	110 ~ 160	130 ~ 170	180 ~ 250	200 ~ 280
Blow Rate (H/Speed)	BPM	600 ~ 1100	350 ~ 850	350 ~ 550	350 ~ 500	250 ~ 400	200 ~ 350	200 ~ 300
			450 ~ 1100	500 ~ 750	450 ~ 600	350 ~ 500	300 ~ 480	300 ~ 450
Back Head N2 Gas Pressure	Bar	12	12	13	11	11	11	11
Hyundai Suitable Excavator	-	R30z-9AK, R35Z9	R85A SMART	R130 SMART, R140 SMART, R150 SMART	R210 SMART PLUS R215 SMART PLUS R215L SMART PLUS R230L SMART PLUS	R210 SMART PLUS R215 SMART PLUS R215L SMART PLUS R230LM SMART PLUS	R340L SMART HX360L HX380L	HX520L

## Hygen Rock Breaker Grease



Dark grey, multipurpose EP grease primarily designed where an extra measure of protection in shock loading condition is required. Contains a highly refined mineral base oil, EP additives, rust and oxidation inhibitors, plus molybdenum disulphide solid film lubricant.

## Features and Benefits

- Contributes to heavy and shock load protection.
- Helps to provide robust water washout resistance.
- Aids reliable rust and corrosion protection
- Assists low temperature pumpability performance

**HD Hyundai Construction Equipment India Pvt. Ltd.**

### Factory Location

Plot No. A-2, M.I.D.C. Chakan, Phase II,  
Village: Khalumbre, Taluka: Khed, Dist:Pune-410501  
E mail: parts@hd.com  
Toll Free No.: 1800 209 8600

**Please Contact**

Scan the QR code  
with your phone  
camera & visit  
our website

