

SPECIFICATIONS

Engine

MODEL	Kubota D1703	
Type	Vertical, water cooled, 3 cylinders in-line, 4-cycle DI Diesel engine, low noise	
Emission Standard	Tier 4	
Rated flywheel horse power		
SAE	J1995(gross)	25.2 PS (18.5kW)
	J1995(net)	24.2 PS (17.8kW)
Max Torque	9.9 kgf.m (72 lbf.ft) @ 1320 rpm	
Bore x stroke	87mm x 92.4mm (3.43" x 3.64")	
Piston Displacement	1647 cc (101.0 in ³)	
Starting motor	12V-1.2kW	
Alternator	12V-30A	

Hydraulic System

Main pump		
Type	Variable displacement piston pumps	
Rated flow	2 x 37.4 (9.9) + 23.1 (6.1) L(gal)/min	
Sub-pump for pilot circuit	Gear pump	

Hydraulic Motors

Travel	Two speed axial piston motor with counter balance valve and parking brake
Swing	Axial piston motor with automatic brake

Relief Valve Settings

Implement circuits	230 kgf/cm ² (3,270 psi)
Travel circuit	230 kgf/cm ² (3,270 psi)
Swing circuit	210 kgf/cm ² (2990 psi)
Pilot circuit	40 kgf/cm ²

Coolant & Lubricant Capacity

Refilling	liter
Fuel tank	46.8
Engine coolant	9.5
Engine oil	7
Hydraulic tank	36
Hydraulic system	63
Travel reduction gear oil	0.6 (each side)

Swing System

Swing motor	Axial piston motor
Swing bearing lubrication	Grease-bathed
Swing speed	9.4 rpm

Drives & Brakes

Max. travel speed(high)/ (low)	4.4/2.6 kmph (2.7/1.6 mph)
Maximum traction force	3039 kgf (29.8kN)
Maximum gradeability	35°
Parking brake	Wet disc

Digging Force (ISO)

	1.6m Arm	1.3m Arm
Bucket	3281 kgf (32.2 kN)	3281 kgf (32.2 kN)
Arm	1623 kgf (15.9 kN)	2025 kgf (19.9 kN)

Weight (Approximate)

Operating weight, including 2,400mm (7'10") boom, SAE heaped 0.11m³ (0.14yd³) excavator bucket, steel track, AC Cabin, lubricant, coolant, full fuel tank, hydraulic tank and the standard equipment.

Shoe Width	Steel 300mm (12")	
	1.6m Arm*	1.3m Arm
Operating Weight	4130 kg (9110 lb)	3970 kg (8760 lb)
Ground Pressure	0.38 kg/cm ² (5.4 psi)	0.36 kg/cm ² (5.1 psi)

* with Additional Counterweight

Under Carriage

X-leg type center frame is integrally welded with reinforced box-section track frames. The undercarriage includes lubricated rollers, track adjusters with shock absorbing springs and sprockets, and steel shoes.

Center frame	X-leg type
Track frame	Pentagonal box type
No. of carrier roller on each side	1
No. of track roller on each side	4

Dimensions

mm (ft-in)

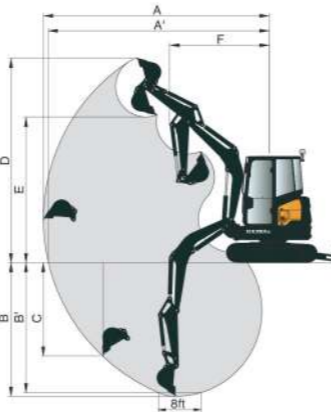


A Overall length	4,783	15'8"
B Overall width	1,740	5'9"
D Overall width of upperstructure	1,540	5'1"
E Overall height of Cab	2,505	8'3"
F Clearance of under counterweight	525	1'9"
H Min. Ground clearance	167	0'7"
I Tail swing radius	900	2'11"
J Tumbler distance	1,680	5'6"
K Track length (without grouser)	2,104	6'11"
M Track gauge	1,440	4'9"
N Track shoe width	300	1'0"
P Ground clearance of blade up	383	1'3"
Q Depth of blade down	447	1'6"
O Height of blade	371	1'3"

Working Range

	2.4m (7'10")	
	1.6m (5'3")	1.3m (4'3")

A Maximum Digging Reach	5,580 (18' 4")	5,290 (17' 4")
A' Digging Reach on Ground	5,460 (17' 11")	5,170 (17' 0")
B Max Digging Depth	3,280 (10' 9")	2,980 (9' 9")
B' Max digging depth (8 ft level)	2,850 (9' 4")	2,500 (8' 2")
C Vertical Digging Depth	2,540 (8' 4")	2,250 (7' 5")
D Maximum Digging Height	5,020 (16' 6")	4,820 (15' 10")
E Maximum Dumping Height	3,615 (11' 10")	3,415 (11' 2")
F Minimum Swing Radius	2,425 (7' 11")	2,350 (7' 9")



HX35Az

OPERATING WEIGHT: 4130 kgs

GROSS POWER: 25.2PS

BUCKET CAPACITY: 0.11m³



HD Hyundai Construction Equipment India Pvt. Ltd.

Factory Location

Plot No. A-2, M.I.D.C. Chakan, Phase II,
Village: Khalumbre, Taluka: Khed, Dist: Pune-410501
E mail: hyundai.care@theconnectionsindia.com
Toll Free No.: 1800 209 8600

Please Contact

Scan the QR code with your phone camera & visit our website



July 2023

building a comfortable tomorrow



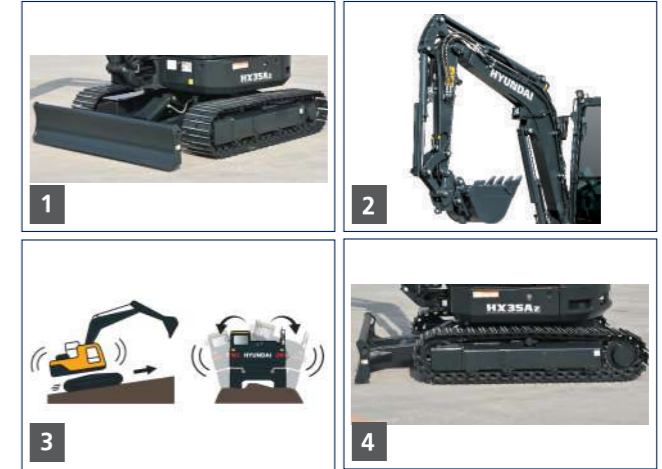
PRODUCTIVITY

1. Efficient, Tier 4 Kubota Engine
2. Advance Hydraulics system
3. Faster Swing speed
4. Zero Tail Swing
5. Higher Digging forces



STRUCTURE & DURABILITY

1. Rugged Upper & Lower Frame
2. Strong Boom & Arm
3. ROPS Cabin
4. Highly Durable Track & Rollers



EFFICIENCY

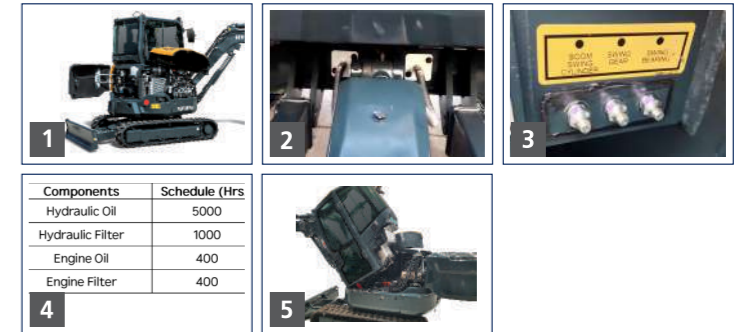
1. Wide Boom Swing Angle
2. Auto Engine Idle
3. Dozer Float
4. Auto Shift Travel Speed

COMFORT INTELLIGENCE™



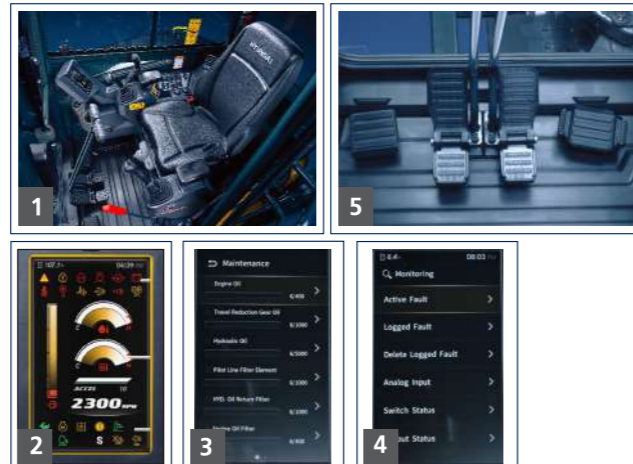
SERVICEABILITY

1. Fully Accessible Engine & Aggregates
2. Two-piece Dozer Hose
3. Centralized Grease Fittings
4. Extended Maintenance Intervals
5. Tilt cabin - Easy access to internal components
6. Long Life Components



OPERATOR CONVENIENCE

1. Spacious & Comfortable Seating Area, Multi Adjustment Operator Seat
2. New 5" LCD Digital Cluster
3. Maintenance Management
4. Self Diagnostic
5. Foldable Pedals, with Rubber Cover



SAFETY

1. Master Switch
2. Anti Theft System
3. Additional Counterweight (Optional)
4. Cylinder Guards - Boom, Arm & Bucket
5. Safety Lever & Emergency Stop

