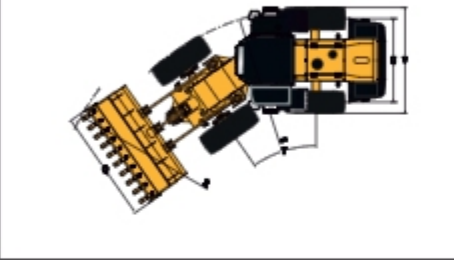
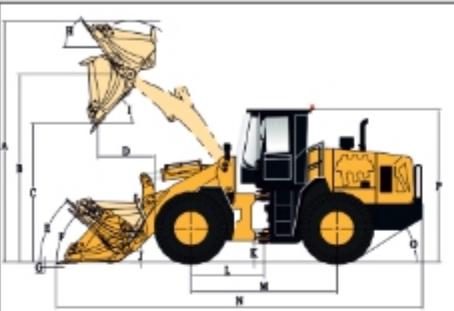


DIMENSIONS

Dimensions are approximate. Dimensions may vary with load and tire wear. Refer to operating specifications.



NO.	DESCRIPTION	UNIT	STD Dump	High Dump
A	Overall Height – Bucket Raised	mm	5264	5545
B	Bucket Pin Height at Max. Lift	mm	4115	4478
C	Dump Clearance at Max. Lift (45°)	mm	3056	3400
D	Reach at Max. Lift and 45° Dump	mm	1330	1254
E	Rack Back Angle at Carry	°	45	51.1
F	Rack Back Angle at Ground	°	41	44.8
G	Digging Depth	mm	50	50
H	Rack Back Angle at Max. Lift	°	57	56
I	Dump Angle at Max. Lift	°	43	44.5
J	Carry Height	mm	284	204
K	Ground Clearance	mm	398	398
L	Center Line of Front Axle to Hitch	mm	1650	1650
M	Wheel Base	mm	3300	3300
N	Overall Length	mm	8288	8567
O	Departure Angle	°	28	28
P	Height to Top of Cab	mm	3400	3400
Q	Overall Width over Bucket	mm	3000	3000
R	Min. Turning Radius over Bucket	mm	7264	7374
S	Min. Turning Radius over Tires	mm	6341	6353
T	Steering Angle – Left/Right	°	35	35
U	Width at Tread Center	mm	2240	2240
V	Overall Width over Tires	mm	2835	2835

TECHNICAL PARAMETERS

Basic	Bucket Capacity	3.0m³
	Rated Payload	5000kg
	Max Operating Weight	17700 Kg
	Max Traction Force	178 kN
	Breakout Force	186 kN
	LXWXH	8288(8567)X3000X3400mm
Engine	Maker/Model	WEICHAI/MP7G234E501
	Rated Power	169kW/2100rpm
	Maximum Torque	1000N·m/1400-1600rpm
	Bore x Stroke (mm)	126X130mm
	No. of Cylinders / Displacement	6/7.47L
	Air Cleaner	Three Stage Air Cleaner
	Alternator	70Amp
	Battery	2-24V/120Ah
	Starting Motor	24V/7.5kW
	Transmission Type	Planetary Powershift
DRIVE TRAIN	Shift Type	Mechanical Powershift Control
	Pressure of Transmission	1.1-1.5MPa
	Torque Converter Type	Single-stage, Duo-turbine, 4-element
	Axles	Rigid (Front)&Oscillating (Rear)
	Rear Axle Oscillation (°)	±10°
	Differential	Conventional
	Main Reducer	Spiral Bevel, 1-stage Reduction
	Final Reducer	Planetary Reduction
	Tire	23.5-25 L-3 16PR TT
	Travel Speed-Forward	10.2/35 km/h
BRAKE SYSTEM	Travel Speed-Reverse	16 km/h
	Service Brake	Gas Push Oil Calliper Brake
	Setting Pressure	0.70-0.78MPa
	Parking Brake	Air Actuated Calliper Brake
	Emergency Brake	Air Actuated Calliper Brake
	Type	Hydraulic Load Sensing System
STEERING SYSTEM	Pump	220L/min-2200rpm
	System Pressure	15MPa
	Cylinder Type	Double Acting
	Steering Angle	±35°
HYDRAULIC SYSTEM	Type	Joystick Control (Single-lever)
	Pump	220L/min-2200rpm
	Control Valve	2 Spool
	System Pressure	18MPa
SERVICE REFILL CAPACITY	Cycle Time (Sec)	11
	Fuel Tank (L)	265L
	Hydraulic Tank (L)	265L
	Crankshaft (L)	17L
Transmission (L)	48L	
Front Axle/Rear Axle (L)	28L/28L	

STANDARD CONFIGURATION

WEICHAI BS IV ENGINE
Mechanical Power-shift Control
Dry-Type Axle
Joystick Working Control (Single Lever)
Air Actuated Calliper brake
ROPS & FOPS Cabin
Air Condition and Heating
Digital LCD Display
Rear View Camera
FAN inside Cabin
Beacon
USB Charger
Sun Visor
Front Cabin Guard
Radio/MP3 Music System
Lockable Oil Tank Cap
Standard Bucket - 3.0m³ GP

OPTIONAL CONFIGURATION

High Dump
Oil Bath Air Filter
Radial & Tubeless Tires
3rd Spool for auxiliary Function
Sliding Cabin Window
Wet Drive Axle
ZF Transmission
Rock Bucket - 2.7 m³
HD Bucket - 2.7 m³
GP Bucket - 3.2 m³
Coal Bucket - 4.5 m³
Light Material Bucket - 5.0 m³
Bucket - 3 Piece Cutting Edge
Log Grapple
Grass Grapple

SERVICE REFILL CAPACITY

Engine Oil	17 Ltr
Hydraulic Oil	165 Ltr
Transmission Oil	48 Ltr
Axle Oil	56 Ltr
Brake Oil	5.4 Ltr



HL950I

WHEEL LOADER

Mining and Quarry Solution



HD Hyundai Construction Equipment India Pvt. Ltd.

Factory Location

Plot No. A-2, M.I.D.C. Chakan, Phase II,
Village: Khalumbre, Taluka: Khed, Dist: Pune-410501
E mail: hyundai.care@theconnectionsindia.com
Toll Free No.: 1800 209 8600

Please Contact

Scan the QR code
with your phone
camera & visit
our website



Oct 2024

building a comfortable tomorrow

- > Gross Power : 227 HP (169 kw) @2100 rpm
- > Operating Weight : 17700 - 18140 KG
- > Payload : 5000 KG
- > Emission : CEV-IV Certified
- > BUCKET CAPACITY : 2.7 - 5.0 m³

HL950I

DESIGNED FOR SMART WORK

MINING AND QUARRY SOLUTION

OPERATOR COMFORT

- Fully Adjustable Suspension Seat
- Spacious Cabin - 360° View
- High Performance - Air Conditioning and Heating
- Sun Visor
- Fan
- Ergonomic Positioned - Switches and Pilot Control
- USB Charger
- Music System
- LED Lights inside cabin
- Ergonomic Hand Rest
- Tilttable Steering Column
- Digital LED Display

SAFETY FEATURES

- ROPS /FOPS Cabin - Standard
- Cabin Front Guard - Standard
- Rear View Camera - Standard
- Battery Cut-off Switch
- Beacon
- Guard for Lamps
- Engine Emergency Cut off Switch
- Articulation Lock
- Steps & hand Rail
- Large External Mirror

ELECTRICAL SYSTEM

- LED working lights
- LED Cabin Lamp
- 5" Digital LCD display
 - a) Work Status
 - b) Error Code Display
 - c) Warning Indicators
- On board Diagnostics (OBD)



HIGH PERFORMANCE

- 227 HP BSIV Compliant Electronic Engine
- 100Nm - Higher Torque
- 4 Valve Technology - Efficient Combustion
- 3 Working Mode - LMMH
- High Fuel Efficiency
- Low Noise
- Z bar linkage with high breakout force
- Faster Cycle time
- Hydraulic operated pilot with Return to dig feature

PROVEN DRIVELINE SYSTEM

- Transmission
 - Fixed shaft type , power shift transmission
 - Proven Quality - High Reliability
 - Simple Design - Easy to Service
- Axle
 - Dry Type - Standard / Wet Type - Option
 - Highly Durable - Suited for Long working hours
 - ZF make Axle - Option Available

WIDE RANGE OF BUCKETS

- Suitable for various applications as per customer requirements

Standard	Option			
GP	Rock/HD	GP	Coal	Light Material
3.0	2.7	3.2	4.5	5.0

SIMPLIFIED MAINTENANCE

- Large side doors for easy reach to Maintenance Points
- Display of error codes on instrument cluster - faster resolution of any issues
- 24x7 service and Parts availability through Hyundai authorized Dealership