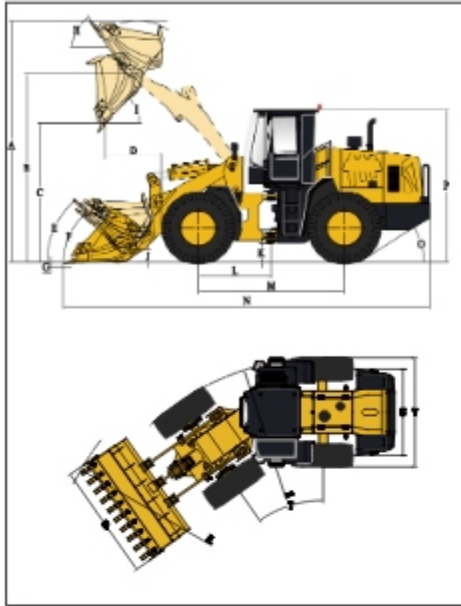


DIMENSIONS

All dimensions are approximate. Dimensions may vary with bucket and for other factors in operating specifications.



NO.	DESCRIPTION	UNIT	STD	High Dump
A	Overall Height – Bucket Raised	mm	4752	4766
B	Bucket Pin Height at Max. Lift	mm	3725	4064
C	Dump Clearance at Max. Lift (45°)	mm	2905	3250
D	Reach at Max. Lift and 45° Dump	mm	1070	1000
E	Rack Back Angle at Carry	°	46.3	46.6
F	Rack Back Angle at Ground	°	40	40.9
G	Digging Depth	mm	30-40	30-40
H	Rack Back Angle at Max. Lift	°	50.7	47
I	Dump Angle at Max. Lift	°	46.6	45
J	Carry Height	mm	400	400
K	Ground Clearance	mm	355	355
L	Center Line of Front Axle to Hitch	mm	1425	1425
M	Wheel Base	mm	2850	2850
N	Overall Length	mm	7200	7450
O	Departure Angle	°	26	26
P	Height to Top of Cab	mm	3180	3180
Q	Overall Width over Bucket	mm	2500	2430
R	Min. Turning Radius over Bucket	mm	6250	6250
S	Min. Turning Radius over Tires	mm	5695	5695
T	Steering Angle – Left/Right	°	35	35
U	Width at Tread Center	mm	1850	1850
V	Overall Width over Tires	mm	2320	2320

TECHNICAL PARAMETERS

Category	Parameter	Value
Basic	Bucket Capacity	1.8m ³
	Rated Payload	3000kg
	Max Operating Weight	10342 Kg
	Max Traction Force	100 kN
	Breakout Force	98 kN
	LxWxH	7450x2430x3180
Engine	Maker/Model	Weichai/WP4.6NG135E502
	Rated Power	97kW/2150rpm
	Maximum Torque	540N-m/1400-1600rpm
	Bore x Stroke (mm)	105x130mm
	No. of Cylinders /Displacement	4/4.6L
	Air Cleaner	Three Stage Air Cleaner
	Alternator	70Amp
	Battery	2-24V/105Ah
	Starting Motor	24V/6kW
	Transmission Type	Countershaft Powershift
DRIVE TRAIN	Shift Type	Mechanical Powershift Control
	Pressure of Transmission	1.1-1.5MPa
	Torque Converter Type	Single-stage & turbine, 3-element
	Axles	Rigid (Front)&Oscillating (Rear)
	Rear Axle Oscillation (°)	±10°
	Differential	Conventional
	Main Reducer	Spiral Bevel, 1-stage Reduction
	Final Reducer	Planetary Reduction
	Tire	17.5-25 L-3 12PR TT
	Travel Speed-Forward	7/13/24/39 km/h
BRAKE SYSTEM	Travel Speed-Reverse	8.5/28 km/h
	Service Brake	Single Circuit Caliper, Dry Brake
	Setting Pressure	0.70-0.78MPa
	Parking Brake	Flexible Shaft Controlled Caliper Brake
STEERING SYSTEM	Emergency Brake	Caliper Brake
	Type	Hydraulic Load Sensing System
	Pump	176L/min-2200rpm
HYDRAULIC SYSTEM	System Pressure	14MPa
	Cylinder Type	Double Acting
	Steering Angle	±35°
	Type	Joystick Control
SERVICE REFILL CAPACITY	Pump	176L/min-2200rpm
	Control Valve	2 Spool
	System Pressure	19MPa
	Cycle Time (Sec)	9.5
	Fuel Tank (L)	200L
	Hydraulic Tank (L)	165L
	Crankshaft (L)	12L
Transmission (L)	36L	
Front Axle/Rear Axle (L)	18L/18L	

STANDARD CONFIGURATION

WEICHAI BS IV ENGINE
Mechanical Power-shift Control
Dry-Type Axle
Joystick Working Control (Single Lever)
Air Actuated Caliper brake
ROPS & FOPS Cabin
Air Condition and Heating
Digital LCD Display
Rear View Camera
FAN inside Cabin
Beacon
USB Charger
Sun Visor
Front Cabin Guard
Radio/MP3 Music System
Lockable Oil Tank Cap
Standard Bucket - 1.7m ³ GP

OPTIONAL CONFIGURATION

High Dump
Oil Bath Air Filter
Radial & Tubeless Tires
3rd Spool for auxiliary Function
Sliding Cabin Window
Wet Drive Axle
Rock Bucket - 1.8 m ³
HD Bucket - 1.8 m ³
GP Bucket - 2.0 m ³
Coal Bucket - 2.5 m ³
Light Material Bucket - 3.0 m ³
Bucket - 3 Piece Cutting Edge
Log Grapple
Grass Grapple

SERVICE REFILL CAPACITY

Engine Oil	14 Ltr
Hydraulic Oil	155 Ltr
Transmission Oil	36 Ltr
Axle Oil	37 Ltr
Brake Oil	4 Ltr



HL930I

WHEEL LOADER

INFRA & QUARRY SOLUTION



HD Hyundai Construction Equipment India Pvt. Ltd.

Factory Location

Plot No. A-2, M.I.D.C. Chakan, Phase II,
Village: Khalumbre, Taluka: Khed, Dist: Pune-410501
E mail: hyundai.care@theconnectionsindia.com
Toll Free No.: 1800 209 8600

Please Contact

Scan the QR code
with your phone
camera & visit
our website



Oct 2024

building a comfortable tomorrow

> Gross Power	: 130 HP (97 kw) @2150 rpm
> Operating Weight	: 10300 - 10687 KG
> Payload	: 3000 KG
> Emission	: CEV-IV Certified
> BUCKET CAPACITY :	1.7 - 3.0 m ³

HL930I

DESIGNED FOR SMART WORK

MINING AND QUARRY SOLUTION

OPERATOR COMFORT

- Fully Adjustable Suspension Seat
- Spacious Cabin – 360° View
- High Performance - Air Conditioning and Heating
- Sun Visor
- Fan
- Ergonomic Positioned - Switches and Pilot Control
- USB Charger
- Music System
- LED Lights inside cabin
- Ergonomic Hand Rest
- Digital LED Display

SAFETY FEATURES

- ROPS /FOPS Cabin – Standard
- Cabin Front Guard – Standard
- Rear View Camera - Standard
- Battery Cut-off Switch
- Beacon
- Guard for Lamps
- Articulation Lock
- Steps & hand Rail
- Large External Mirror

ELECTRICAL SYSTEM

- LED working lights
- LED Cabin Lamp
- 5" Digital LCD display
 - a) Work Status
 - b) Error Code Display
 - c) Warning Indicators
- On board Diagnostics (OBD)



HIGH PERFORMANCE

- 130 HP BSIV Compliant Electronic Engine
- 540Nm - Higher Torque
- 3 Working Mode - LMWH
- High Fuel Efficiency
- Low Noise
- Z bar linkage with high breakout force
- Faster Cycle time
- Hydraulic operated pilot with Return to dig feature

PROVEN DRIVELINE SYSTEM

- Transmission
 - Fixed shaft type , power shift transmission
 - Proven Quality – High Reliability
 - Simple Design – Easy to Service
- Axle
 - Dry Type – Standard / Wet Type - Option
 - Highly Durable – Suited for Long working hours

WIDE RANGE OF BUCKETS

- Suitable for various applications as per customer requirements

Standard	Option			
GP	Rock/HD	GP	Coal	Light Material
1.7	1.8	2.0	2.5	3.0

SIMPLIFIED MAINTENANCE

- Large side doors for easy reach to Maintenance Points
- Display of error codes on instrument cluster
 - faster resolution of any issues
- 24x7 service and Parts availability through Hyundai authorized Dealership