

STANDARD / OPTIONAL LIST

Standard Equipment

ISO standard cabin
All-weather steel cab with all-around visibility
Safety glass windows
Sliding fold-in front window
Sliding side window
Air-conditioner
Accessory box & Ashtray
Computer Aided Power Optimization (New CAPO) system
3-power mode, 2-work mode
Auto deceleration & one touch deceleration system
Auto engine overheat prevention system
Self diagnostic system
Centralized monitoring
LCD display
Engine speed
Clock & Error code
Mobile charging point
Fuel level gauge
Engine coolant temperature gauge
Hyd. oil temperature gauge

Warning

Fuel level
CPU
Engine oil pressure
Engine coolant temperature
Hyd. oil temperature
Low battery
Air cleaner clogging
Door and cab locks, one key
One outside rearview mirror
Dual channel fully adjustable suspension seat
Slidable joystick, pilot-operated
Two front working lights and two cabin work lights
Electric horn
Batteries (2 x 12V x 100 AH)
Battery master switch
Removable clean out screen for oil cooler
Automatic swing brake
Removable reservoir tank
24V Power Socket
Fuel pre-filter
Boom holding system

Arm holding system
Counter weight (4400kg)
Mono boom (5.68m, 18' 8") HD
Arm (2.4m, 7' 10") HD
Standard bucket (0.95m³, 1.25 yd³) Marble/Granite
Track shoes (600mm, 24")HD 12mm thick
Track rail guard
Cabin front protector
Radio / USB player
Operator kit
Tool kit
Remote management system (Hi-Track)

Optional Equipment

Sun visor for cabin inside
Beacon lamp
Single acting piping kit
Fuel Refilling Pump

Various optional Buckets (SAE heaped)

GP bucket (1.20 m³, 1.57 yd³)
GP bucket (1.05 m³, 1.37 yd³)
Rock heavy duty bucket (0.95 m³, 1.25 yd³)
Rock heavy duty bucket (0.87 m³, 1.14 yd³)
Coal bucket (1.7 m³, 2.2 yd³)
Starting Aid (Air-grid heater, cold weather)
Travel alarm
Operator seat belt
Fire extinguisher
Rock Breaker
Clamshell Bucket
Quick Coupler
Orange Grapple



R230LM **SMART PLUS**

OPERATING WEIGHT: 23300kgs

GROSS POWER : 148 HP @ 2000 rpm

BUCKET CAPACITY: 0.87 - 1.7m³



HD Hyundai Construction Equipment India Pvt. Ltd.

Factory Location

Plot No. A-2, M.I.D.C. Chakan, Phase II,
Village: Khalumbre, Taluka: Khed, Dist: Pune-410501
E mail: hyundai.care@theconnectionsindia.com
Toll Free No.: 1800 209 8600

Please Contact

in.hd-hyundaice.com @hdhyundaiceindia /HDHyundaiCEIndia @HyundaiCEIndia
/hyundai-construction-equipment-india-pvt-ltd /@hyundaiconstructionequipme9481

Scan the QR code
with your phone
camera & visit
our website



Oct 2023

building a comfortable tomorrow

R230LM **SMART PLUS**

DESIGNED FOR SMART WORK

BEST-IN CLASS PERFORMANCE

- Advanced CAPO system
- Hydraulic flow summation
- Swing priority
- Regeneration system
- Excellent digging forces



OPERATOR COMFORT

- Spacious cabin
- Fully adjustable seat
- Enhanced visibility
- User friendly functionality



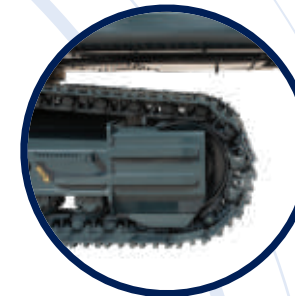
IMPROVED FUEL EFFICIENCY

- New ECO mode
- Fuel saving kit
- Electro hydraulic system
- Auto deceleration system
- Efficient breaker mode



INCREASED MACHINE DURABILITY

- Strengthened undercarriage
- Proven upper structure
- Forged ring body
- Heavy duty front attachment



SIMPLIFIED MAINTENANCE

- Easy serviceability
- Extended maintenance
- Large capacity fluid tank
- Low life cycle cost



PARTS & SUPPORT

- Hyundai genuine parts
- Max parts availability
- On-site product support
- Remote management system (Hi-Track)



PRIDE AT WORK

Hyundai construction equipment strives to build state-of-the art earthmoving equipment to give every operator maximum performance, more precision, versatile machine preferences, and proven quality.

New technologies designed to improve performance and precision, make the Hyundai excavator smooth, fast and easy to control.

Take pride in your work with Hyundai!



ENGINE

The water cooled, 4 cycle diesel, 6 cylinder in line, direct injection turbocharged, charge air cooled engine is built for power, reliability, efficiency.

The engine is manufactured to perform in wide range of heat, humidity and dust conditions without compromising productivity.



R230LM SMART PLUS

New Eco Mode



HYDRAULIC SYSTEM

Electro hydraulic control system provides wide range of flow at various workloads for paramount productivity. Open center design of Main Control Valve (MCV) ensures fast response and maximum efficiency in tough conditions.



CHARGE AIR COOLER

- Cools the air as it passes through turbocharger
- Resulting in cool high density, bigger mass of air being pumped to engine
- Increasing the burning efficiency



EFFICIENT COMBINED OPERATION

Inbuild flow summation system and **swing priority** function leads to faster swing cycle results in excellent output



BEST IN CLASS TRAVEL PERFORMANCE

- Higher traction force
- Dual travel option
- High maneuverability

Traction Force : 21100 kgf

CHOICE OF OPERATING MODE

Working Mode	Advantage
H Mode	<ul style="list-style-type: none">• Maximum Power• Fast Cycle time
S Mode	<ul style="list-style-type: none">• Balance between power and fuel efficiency
Eco Mode	<ul style="list-style-type: none">• Better fuel efficiency
Breaker Mode	<ul style="list-style-type: none">• Sets pump flow to optimal level and boosts efficiency



DIGGING FORCES

Best in class digging forces ensures faster productive cycle time in extreme work conditions.

- Bucket - 15500 kgf
- Arm - 12000 kgf

FUEL EFFICIENCY



IMPROVED FUEL EFFICIENCY

Advanced CAPO system, newly designed CMCU, power & working mode options results in excellent fuel efficiency.

FUEL SAVING KIT

- Monitor undue load and cut down losses.
- Provides better fuel efficiency



NEGATIVE FLOW CONTROL

Optimum balance between pump and engine output for better fuel efficiency



ONE TOUCH IDLE & AUTO DECELERATION

Prevents fuel losses by reducing engine rpm during no-load condition

EXCLUSIVE BREAKER MODE

Excellent fuel saving due to exclusive power for breaker operation



ARM REGENERATION SYSTEM

- Smooth operation
- Prevent cavitation
- Increased performance & fuel efficiency



OPERATOR COMFORT

OPERATOR DELIGHT

More space, better visibility, powerful air-conditioning and adjustable fully suspension seat, easy to access controls ensure that the operator can work for longer hours without stress or fatigue in the comfortable and safe working environment.



360 degree visibility, fully open sunroof, added side lamp & mirror ensure comfortable, safe working environment.

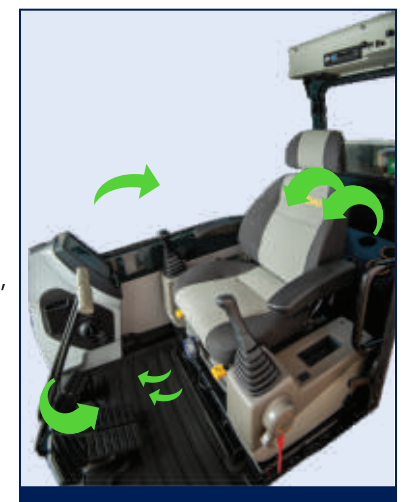
OPERATOR SEAT

Easily adjustable fully suspension seat with adjustable arm rest



SPACIOUS CABIN

More head room, large space, large door for easy entry and exit



INSTRUMENT PANEL

The user-friendly multi language option cluster making it easy to check all critical systems like

- Hydraulic oil temperature,
- Coolant temperature
- Fuel level
- Self diagnostic checks
- Maintenance management

to optimizing productivity needs ensuring fuel efficiency



SUN VISOR (OPTIONAL)



AIR CONDITIONER

- High performance air conditioner
- Improved AC ducting
- Water bottle cooling system

> RELIABILITY



HEAVY DUTY FRONT STRUCTURE

Use of specialized advance steel plates and reinforced design for higher strength and durability

ULTIMATE RELIABILITY



Reinforced idler frame



Lower frame belly guard



1 pc cast H link



Reinforced bucket link



HD TRACK LINK



ROCK GUARD

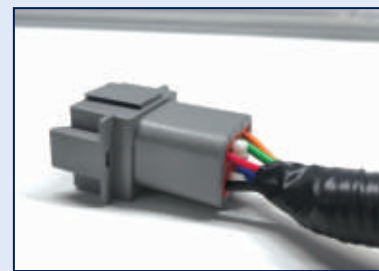


TANK SAFETY COVER



SWING & TRAVEL SYSTEM

Highly efficient Hyundai designed swing and travel system ensure maximum reliability & performance.



RELIABLE ELECTRICALS

- Dust and water proof connectors
- Longer component life



AIR PRE-CLEANER

- Removes dirt and Debris from air before entering air filter
- Improves air filter life
- Low maintenance cost

RUGGED UNDERCARRIAGE

X frame provides excellent resistance to torsional bending to enhance structure life



> SERVICEABILITY

LEADING SERVICE INTERVAL

More efficient cooling system which extend service intervals , minimize operating cost and reduce machine down time.

CHANGE INTERVAL

Hydraulic oil	5000 hrs
Hydraulic filter	1000 hrs
Engine oil	500 hrs New!
Engine Filter	500 hrs New!



IMPROVED COOLING EFFICIENCY

- Radiator and oil cooler are arranged in line to maximize efficiency
- Easily accessible from ground level to clean

DURABLE MOUNTING PIN BUSH



LARGE LCD MONITOR

Operator can check the machine's vital signs without any difficulties

- **Maintenance Management**
Proactive maintenance
- **Self Diagnostic**
Reduces down time
- **Warning Indicator**
Ensures safe working

New!

Hinged type front glass guard for easy cleaning

EASY ACCESSIBILITY

Easy access for maintenance means regular checks get done faster. Hyundai's SMART machines feature easy service access to increase uptime and reduce operating costs.



> SAFETY

SAFETY - PEACE OF MIND AND OPERATOR CONFIDENCE

Cabin is integrally welded with low-stress using high strength steel to provide enhanced protection. Handrails and steps are provided for easy operation. Engine fan guard avoid chances of accidental injury.



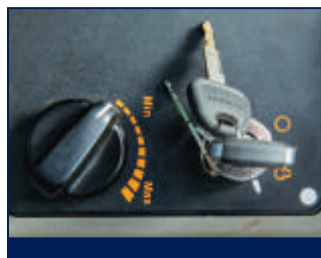
COUNTER BALANCE VALVE

Works as a hydrostatic brake and prevents machine against accidental roll down in steep gradients.



BOOM & ARM HOLDING SYSTEM

Prevent attachments from drifting against gravity due to prolonged overhanging.



ANTI RESTART FUNCTION

Prevents starter from damage during engine operation



BATTERY DISCONNECT SWITCH

Cut off power during maintenance and protect batteries from excessive drain



AUTO ENGINE OVERHEAT PREVENTION

Auto Deceleration with activation of engine overheat warning to avoid catastrophic failure

> PARTS & SUPPORT

HYUNDAI GENUINE PARTS

Developed in synergy with our machines, Hyundai parts and lubricants ensure that you get the high levels of performance, reliability and safety that come with the complete Hyundai experience. Enjoy the confidence and assurance of the most stringent testing procedures and the high quality manufacturing processes safeguarding your machine's health. Experience the versatility of our 200+ strong outlet network across India

WHY RISK IT?

Maximize profits and extend your machine's life.



BENEFITS OF USING GENUINE HYUNDAI PARTS AND LUBRICANTS

- Genuine Hyundai Parts meet strict specifications and standards in Chemistry, Microstructure and Tensile Strength.
- Benefit from the continuous improvements and advancements made by Hyundai's technical team
- Improved performance of hydraulics and engine components
- Enjoy greater productivity with higher uptime
- Higher resale values
- Reduced oil consumption and unexpected breakdowns
- Enhanced component life



Our unique remote management system allows customers to access machine operating information & obtain service & maintenance alerts at the touch of a button

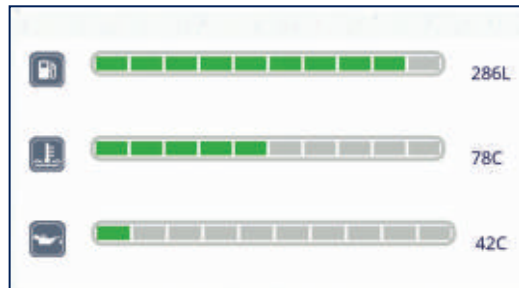


INCREASED PRODUCTIVITY

Remote management system empowers you to enhance the efficiency of your operations. Make better decision by comparing the machine's operating time with its travelling idling & breaker use duration.

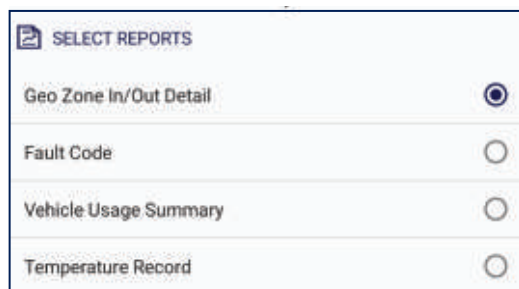
CONVENIENT & EASY MONITORING

Enjoy round the clock and on the move access to your machine information through the website or mobile app.



PROACTIVE MAINTENANCE

Access your machines service & maintenance history with the utmost convenience. Plan your service schedules intelligently with our regular reminders.

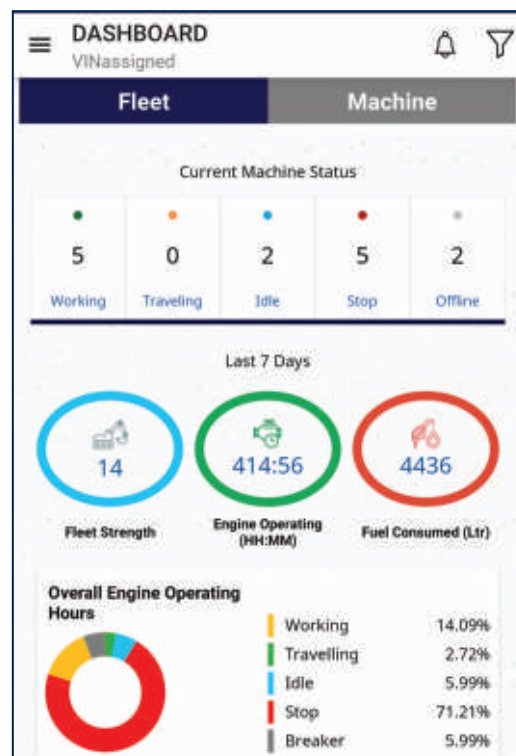


ALARMS

Get notified of system alarms & protect your machine from critical faults & experience repairs.

SECURITY & FLEET MONITORING

Protect your machine from theft or unauthorized use. GPS features allows you to create a geo-fence & alerts you if the machine moves out of the defined boundary.



Engine

Maker/Model	Cummins6BTAA-5.9C		
Rated flywheel horse power	SAE	J1995 (Gross) J1349 (Net)	148HP (110KW) @2000rpm 145HP (108KW) @2000rpm
Max Torque	63.7Kgfm (462 lbf.ft) @1300rpm		

Hydraulic System

Main pump	
Type	Two variable displacement piston pumps
Max. flow	2x220 lpm
Sub-pump for pilot circuit	Gear pump
Cross-sensing & fuel saving pump system	

Hydraulic Motors

Travel	Two speed axial piston motor with counter balance valve and parking brake
Swing	Axial piston motor with automatic brake

Relief Valve Settings

Implement Circuit	330kgf/cm ²
Travel	330kgf/cm ²
Swing Circuit	240kgf/cm ²
Pilot Circuit	35kgf/cm ²
Service valve	Installed

Coolant & Lubricant Capacity

REFILLING	LITER
Fuel tank	340
Engine coolant	25.5
Engine oil	21
Swing device	5
Final drive (each)	5.8
Hydraulic system / Hydraulic tank	260 / 150

Drives & Brakes

Drive method	Fully hydrostatic type
Drive motor	Axial piston motor in-shoe design
Reduction system	Planetary reduction gear
Max.drawbar pull	21100kgf (46500 lbf)
Max.travel speed (high/low)	5.3kmph/3.4kmph
Grade ability	35 Degree (70%)
Parking brake	Multi wet disc

Undercarriage

X-Leg type centre frame is integrally welded with reinforced box section track frames. The undercarriage includes lubricated rollers, idlers, track adjusters with shock absorbing spring and sprockets and trackchain with triple grouse shoes.

Centre frame	X-leg type
Track frame	Pentagonal box type
No. of shoes on each side	49
No. of carrier rollers each side	2
No. of track rollers each side	9
No. of rail guard each side	3

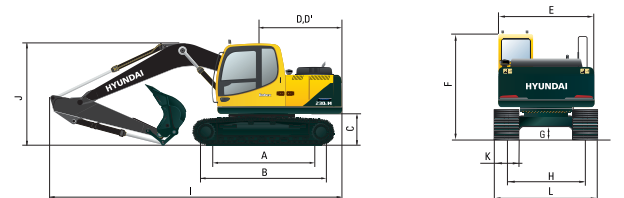
Swing System

Swing motor	Axial piston motor
Swing reduction	Planetary gear reduction
Swing bearing lubrication	Grease bathed
Swing brake	Multi wet disc
Swing speed	11 rpm

Operating Weight

Shoe Width mm (in)	Operating weight kg (lb)	Ground pressure kg/cm ² (psi)
600 mm (24")	23,300 (51,368)	0.50 (7.11)

Dimensions (mm)



A	Tumbler distance	3640
B	Overall length of crawler	4440
C	Ground clearance of counter weight	1060
D	Tail swing radius	2830
D'	Rear-end length	2770
E	Overall width of upper structure	2700
F	Overall height of cabin	2920
G	Min. ground clearance	480
H	Track gauge	2390
I	Overall length	9570
J	Overall height of boom	3110
K	Track shoe width	600
L	Overall width	2990

Working Ranges (mm)

Boom length (std.)	5680
Arm length (std.)	2400

A	Maximum Digging Reach.	9500
A'	Digging Reach on Ground.	9330
B	Max Digging Depth	6220
B'	Max- Digging Depth (8' level).	6010
C	Vertical Wall Digging Depth	5720
D	Maximum Digging Height	9340
E	Maximum Dumping Height.	6520
F	Minimum Swing Radius.	3740
Bucket Digging Force		15500 kgf
Arm Crowd Force		12000 kgf

LIFTING CAPACITIES

LIFTING CAPACITIES R230LM SMART PLUS



Rating over-front



Rating over-side

• Boom: 5.68 m (18' 8") • Arm : 2.4m (7' 10") • Bucket 1.05m³ R230LM • 600mm Triple Grouser Shoe with 4400kg CWT											
Lift-point height m (ft)		Lift-point radius						At max. reach			Reach m (ft)
		3.0m (9.8ft)		4.5m (14.8ft)		6.0m (19.7ft)		7.5m (24.6ft)		Capacity	
7.5m	kg									*3910	*3910
24.6ft	lb									*8620	*8620
6.0m	kg					*3830	*3830			*3850	3740
19.7ft	lb					*8440	*8440			*8490	8250
4.5m	kg			*5000	*5000	*4240	*4240	*3930	3120	*3920	3000
14.8ft	lb			*11020	*11020	*9350	*9350	*8660	6880	*8640	6610
3.0m	kg			*6520	*6520	*4930	4390	*4200	2990	*4060	2640
9.8ft	lb			*14370	*14370	*10870	9680	*9260	6590	*8950	5820
1.5m	kg			*7920	6340	*5630	4090	*4540	2850	4250	2500
4.9ft	lb			*17460	13980	*12410	9020	*10010	6280	9370	5510
0.0m	kg	*6110	*6110	*8630	6040	*6120	3900	4720	2750	4350	2530
0.0ft	lb	*13470	*13470	*19030	13320	*13490	8600	10410	6060	9590	5580
-1.5m	kg	*11070	*11070	*8640	5970	*6230	3830			*4800	2800
-4.9ft	lb	*24410	*24410	*19050	13160	*13730	8440			*10580	6170
-3.0m	kg	*11460	*11460	*7970	6080	*5750	3900			*5130	3480
-9.8ft	lb	*25260	*25260	*17570	13400	*12680	8600			*11310	7670
-4.5m	kg	*8770	*8770	*6160	*6160					*5380	*5380
-14.8ft	lb	*19330	*19330	13580	*13580					*11860	*11860

1. Lifting capacity is based on SAE J1097, ISO 10567.
2. Lifting capacity of the Robex Series does not exceed 75% of the tipping load with the machine on firm, level ground or 87% of full hydraulic capacity.
3. The load point is a hook located on the back of the bucket.
4. *indicates the load limited by hydraulic capacity.



SPECIFICATIONS

BUCKETS

All buckets are welded with high-strength steel.

GENERAL PURPOSE		COAL BUCKET		HEAVY DUTY		ROCK BUCKET	
							
1.05m³ (1.37 yd³) 1.20m³ (1.57 yd³)		1.7m³ (2.22 yd³)		1.10m³ (1.44 yd³) 0.95m³ (1.25 yd³) 0.87m³ (1.14 yd³)		0.95m³ (1.25 yd³)	
Capacity m³(yd³)		Width mm (in)		Weight. kg (lb)	Recommendation mm (ft -in)		
SAE heaped	CECE heaped	Without side cutters	With side cutters		5.68m (18' 8") Boom		
					2.4m (7' 10") Arm		
1.05m³ (1.37 yd³)	0.92m³ (1.20 yd³)	1250 (49.2")	1370 (53.9")	807 (1779)	●		
1.20m³ (1.57 yd³)	1.00m³ (1.31 yd³)	1400 (55.1")	1520 (59.8")	811 (1788)	▲		
★ 1.7m³ (2.22 yd³)	1.40m³ (1.83 yd³)	1550 (61.0")	-	890 (1962)	▲		
● 0.95m³ (1.25 yd³)	0.83m³ (1.09 yd³)	1240 (48.8")	-	1053 (2321)	●		
● 0.87m³ (1.14 yd³)	0.75m³ (0.98 yd³)	1140 (44.9")	-	946 (2086)	●		
● 0.95m³ (1.25 yd³)	0.83m³ (1.09 yd³)	1240 (48.8")	1360 (53.5")	1026 (2262)	●		
● 1.10m³ (1.44 yd³)	0.96m³ (1.26 yd³)	1361 (53.8")	1425 (56.10")	1110 (2447)	■		
★ : Standard backhoe bucket ● : Rock-Heavy Duty bucket ★ : Coal bucket				● Applicable for materials with density of 2,000 kg/m³ (3,370 lb/yd³) or less ■ Applicable for materials with density of 1,600 kg/m³ (2,700 lb/yd³) or less ▲ Applicable for materials with density of 1,100 kg/m³ (1,850 lb/yd³) or less			

ATTACHMENT

Boom and arm are of all-welded with a low-stress, full-box section design. 5.68m (18' 8") mono boom and 2.4m (7' 10") Arm is available. Buckets are all-welded, high-strength steel implements.

Arm	Length	mm (ft.in)	*2400 (7' 10")
	Weight	kg (lb)	990 (2180)
Bucket digging force	SAE	kN	133.4
		kgf	13,600
		lbf	29,980
	ISO	kN	152.0
		kgf	15,500
		lbf	34,170
Arm crowd force	SAE	kN	112.8
		kgf	11,500
		lbf	25,350
	ISO	kN	117.7
		kgf	1,2000
		lbf	26,460

*: Standard Arm (Arm weight including cylinder and linkage)