

# SPECIFICATIONS

## Engine

MODEL	<b>Kubota D1703</b>	
Type	Vertical, water cooled, 3 cylinders in-line, 4-cycle DI Diesel engine, low noise	
Emission Standard	Tier 4	
Rated flywheel horse power		
SAE	J1995(gross)	25.2 PS (18.5kW)
	J1995(net)	24.2 PS (17.8kW)
Max Torque	9.9 kgf.m (72 lbf.ft) @ 1320 rpm	
Bore x stroke	87mm x 92.4mm (3.43" x 3.64")	
Piston Displacement	1647 cc (101.0 in <sup>3</sup> )	
Starting motor	12V-1.2kW	
Alternator	12V-30A	

## Hydraulic System

Main pump		
Type	Variable displacement piston pumps	
Rated flow	2 x 37.4 (9.9) + 23.1 (6.1) L(gal)/min	
Sub-pump for pilot circuit	Gear pump	

## Hydraulic Motors

Travel	Two speed axial piston motor with counter balance valve and parking brake
Swing	Axial piston motor with automatic brake

## Relief Valve Settings

Implement circuits	230 kgf/cm <sup>2</sup> (3,270 psi)
Travel circuit	230 kgf/cm <sup>2</sup> (3,270 psi)
Swing circuit	210 kgf/cm <sup>2</sup> (2990 psi)
Pilot circuit	40 kgf/cm <sup>2</sup>

## Coolant & Lubricant Capacity

Refilling	liter
Fuel tank	46.8
Engine coolant	9.5
Engine oil	7
Hydraulic tank	36
Hydraulic system	63
Travel reduction gear oil	0.6 (each side)

## Swing System

Swing motor	Axial piston motor
Swing bearing lubrication	Grease-bathed
Swing speed	9.4 rpm

## Drives & Brakes

Max. travel speed(high)/ (low)	4.4/2.6 kmph (2.7/1.6 mph)
Maximum traction force	3039 kgf (29.8kN)
Maximum gradeability	35°
Parking brake	Wet disc

## Digging Force (ISO)

	1.6m Arm	1.3m Arm
Bucket	3281 kgf (32.2 kN)	3281 kgf (32.2 kN)
Arm	1623 kgf (15.9 kN)	2025 kgf (19.9 kN)

## Weight (Approximate)

Operating weight, including 2,400mm (7'10") boom, SAE heaped 0.11m<sup>3</sup> (0.14yd<sup>3</sup>) excavator bucket, steel track, AC Cabin, lubricant, coolant, full fuel tank, hydraulic tank and the standard equipment.

Shoe Width	Steel 300mm (12")	
	1.6m Arm*	1.3m Arm
Operating Weight	4130 kg (9110 lb)	3970 kg (8760 lb)
Ground Pressure	0.38 kg/cm <sup>2</sup> (5.4 psi)	0.36 kg/cm <sup>2</sup> (5.1 psi)

\* with Additional Counterweight

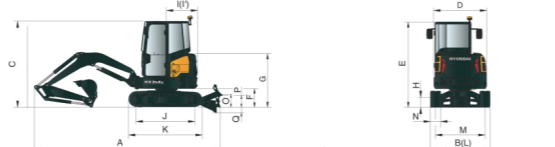
## Under Carriage

X-leg type center frame is integrally welded with reinforced box-section track frames. The undercarriage includes lubricated rollers, track adjusters with shock absorbing springs and sprockets, and steel shoes.

Center frame	X-leg type
Track frame	Pentagonal box type
No. of carrier roller on each side	1
No. of track roller on each side	4

## Dimensions

mm (ft-in)

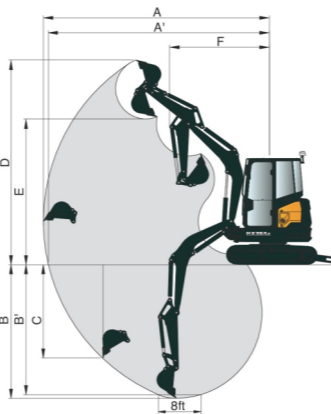


A Overall length	4,783	15'8"
B Overall width	1,740	5'9"
D Overall width of upperstructure	1,540	5'1"
E Overall height of Cab	2,505	8'3"
F Clearance of under counterweight	525	1'9"
H Min. Ground clearance	167	0'7"
I Tail swing radius	900	2'11"
J Tumbler distance	1,680	5'6"
K Track length (without grouser)	2,104	6'11"
M Track gauge	1,440	4'9"
N Track shoe width	300	1'0"
P Ground clearance of blade up	383	1'3"
Q Depth of blade down	447	1'6"
O Height of blade	371	1'3"

## Working Range

	2.4m (7'10")	
	1.6m (5'3")	1.3m (5'3")

A Maximum Digging Reach	5,580 (18' 4")	5,290 (17' 4")
A' Digging Reach on Ground	5,460 (17' 11")	5,170 (17' 0")
B Max Digging Depth	3,280 (10' 9")	2,980 (9' 9")
B' Max digging depth (8 ft level)	2,850 (9' 4")	2,500 (8' 2")
C Vertical Digging Depth	2,540 (8' 4")	2,250 (7' 5")
D Maximum Digging Height	5,020 (16' 6")	4,820 (15' 10")
E Maximum Dumping Height	3,615 (11' 10")	3,415 (11' 2")
F Minimum Swing Radius	2,425 (7' 11")	2,350 (7' 9")



# HX35Az

OPERATING WEIGHT: 4130 kgs

GROSS POWER: 25.2PS

BUCKET CAPACITY: 0.11m<sup>3</sup>



## HD Hyundai Construction Equipment India Pvt. Ltd.

### Factory Location

Plot No. A-2, M.I.D.C. Chakan, Phase II,  
Village: Khalumbre, Taluka: Khed, Dist: Pune-410501  
E mail: hyundai.care@theconnectionsindia.com  
Toll Free No.: 1800 209 8600

### Please Contact

Scan the QR code with your phone camera & visit our website



July 2023

building a comfortable tomorrow



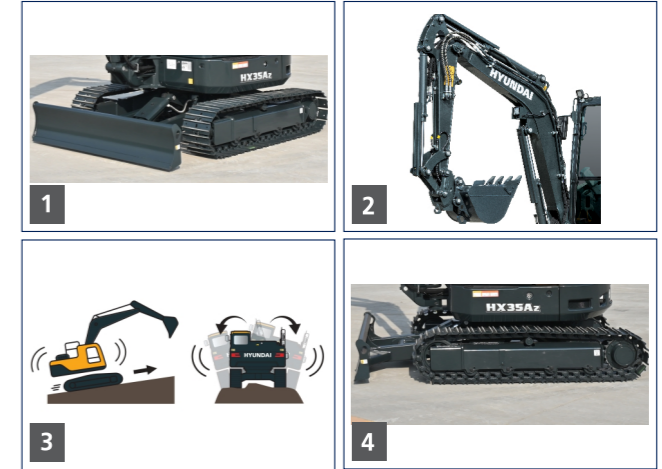
### PRODUCTIVITY

1. Efficient, Tier 4 Kubota Engine
2. Advance Hydraulics system
3. Faster Swing speed
4. Zero Tail Swing
5. Higher Digging forces



### STRUCTURE & DURABILITY

1. Rugged Upper & Lower Frame
2. Strong Boom & Arm
3. ROPS Cabin
4. Highly Durable Track & Rollers



### EFFICIENCY

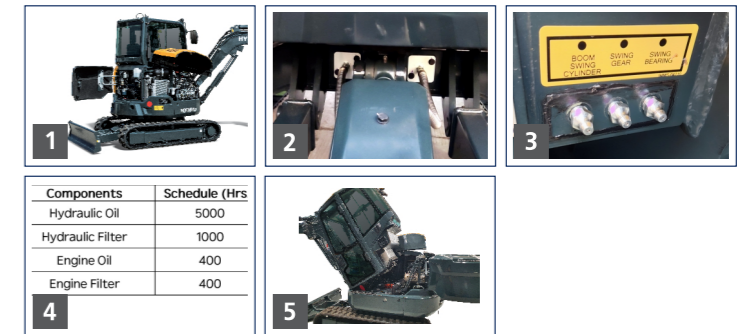
1. Wide Boom Swing Angle
2. Auto Engine Idle
3. Dozer Float
4. Auto Shift Travel Speed

## COMFORT INTELLIGENCE™



### SERVICEABILITY

1. Fully Accessible Engine & Aggregates
2. Two-piece Dozer Hose
3. Centralized Grease Fittings
4. Extended Maintenance Intervals
5. Tilt cabin - Easy access to internal components
6. Long Life Components



### OPERATOR CONVENIENCE

1. Spacious & Comfortable Seating Area, Multi Adjustment Operator Seat
2. New 5" LCD Digital Cluster
3. Maintenance Management
4. Self Diagnostic
5. Foldable Pedals, with Rubber Cover



### SAFETY

1. Master Switch
2. Anti Theft System
3. Additional Counterweight (Optional)
4. Cylinder Guards - Boom, Arm & Bucket
5. Safety Lever & Emergency Stop

