

HX520L

OPERATING WEIGHT: 50,200kg

GROSS POWER: 335 HP @ 2100 rpm

BUCKET CAPACITY: 2.43, 2.79, 3.2 m³



building a comfortable tomorrow

RULE THE GROUND

The HX Series exceeds customer's expectation!
Become a true leader on the ground with HCE's HX Series.



WORK MAX, WORTH MAX

- IPC (Intelligent Power Control)
- New Cooling System with Increased Air Flow
- Fuel Rate Information
- ECO Gauge
- Enlarged Air Inlet with Grill Cover
- Reversible Fan for Efficient Cleaning



MORE RELIABLE, MORE SUSTAINABLE

- Durable Cooling Module
- Reinforced Pin, Bush, and Polymer Shim
- Reinforced Durability of Upper and Lower Structure and Attachments
- Wear Resistant Cover Plate
- Hi-grade (High-pressure) Hoses



INFOTAINMENT FRONTIER

- New Air Conditioning System
- New Front Side Air Conditioning System
- Intelligent and Wide Cluster
- New Integrated Audio System



MODERN COMFORT, SIMPLE AND SAFE SOLUTIONS

- Rear View Camera System Option
- Hi MATE (Remote Management System)
- Next Generation Cab Suspension Mount



HX520L





*Photo may include optional equipment.

New Variable Power Control

The HX Series minimizes equipment input and output control signals to improve fuel efficiency. Its three-stage power mode ensures the highest performance in any operating environment.



* P(power) mode : Maximizes speed and power of the equipment for heavy load work.



* S(standard) mode : Optimizes performance and fuel efficiency of the equipment for general load work.



* E(economy) mode : Improves the control system for light load work.

WORK MAX, WORTH MAX

Fuel Efficient System, Allows Great Performance

HX Series has an eco-friendly, high-performance engine which ensures both excellent fuel efficiency and high power. With outstanding operating performance proven by rigorous tests at various work sites, it will satisfy any customers needs.

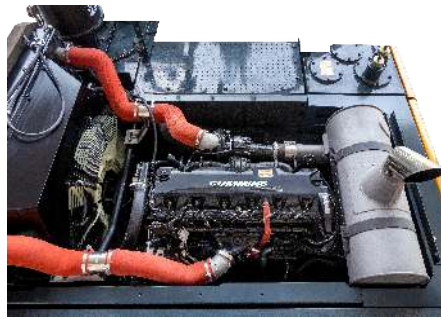
15% bigger screen from 7 to 8 inch is applied in HX Series.

More funtions and better resolution are available with adding premium options.



IPC (INTELLIGENT POWER CONTROL)

HX Series adopts the upgraded IPC system. It is able to optimize pump flow rate and power at the various working condition through the individual pump control. Furthermore, optimized design of MCV and pipe line minimizes energy loss such as conflux and throttle loss.



REVERSIBLE FAN

Reversible fan features is provided to improve cooling performance and ensure that the equipment maintains the best engines performance in high dust area.



ECO GAUGE

Eco gauge enables economic operation of machines. The gauge level and color displays engine torque and fuel efficiency level. On top of that, the status of fuel consumption such as average rate and the total amount of fuel consumed is displayed. Hourly and daily based fuel consumption can be checked in the detailed menu as well.



FUEL RATE INFORMATION



DURABLE COOLING MODULE

HX Series has a durable cooling module that passed stringent tests, demonstrating the highest productivity in tough working environments.



**ENLARGED AIR INLET
WITH GRILL COVER**

Enlarged vent hole of the air inlet side cover and fine net grill to prevent penetration of foreign materials further improve durability.

> MORE RELIABLE, MORE SUSTAINABLE

New Exterior Design for Robustness and Safety

The true value of HX Series lies in its durability. The robust frame structure and the attachments show the real value of HX Series in tough working environments and promise higher productivity.

HX Series has a durable cooling module that passed stringent tests, demonstrating the highest productivity in tough working environments.

REINFORCED DURABILITY OF UPPER AND LOWER STRUCTURE AND ATTACHMENTS

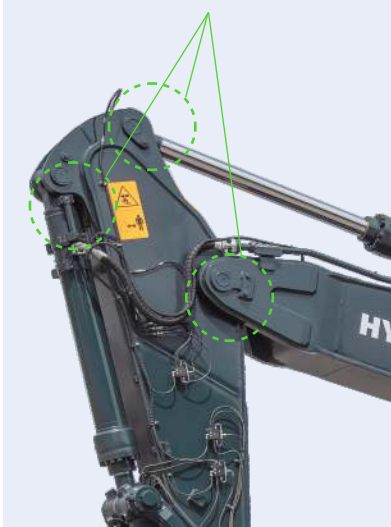
The upper and lower structure and attachments of HX Series have higher durability than demanded on the site, as proven through numerous tests including road tests and virtual simulation. The wear resistance of the bucket has been improved by use of new material.



REINFORCED PINS, BUSHING AND POLYMER SHIMS

HX Series improves lubricity of connecting parts between the equipment and attachments. Gaps with attachments are minimized by wear-resistant long-life pins, bushes, and polymer shims, supporting the highest performance with invariable durability.

Chrome Coated Pins



WEAR RESISTANT COVER PLATE

A wear-resistant cover plate is installed at the end of the arm to minimize abrasion on the connector between the arm and the bucket. Vibration reduction of buckets enables more stable operation even in high-load work.



HI-GRADE (HIGH-PRESSURE) HOSES

HX Series uses high-pressure hoses with improved heat and pressure resistance, greatly increasing the durability of the equipment.





We make the best performance
in rough working conditions
without any unsureness with
trustworthy HX520L. //





13%

**CABIN SPACE FOR DRIVERS
INCREASED BY** (compared to the previous model)

310mm

340mm

INFOTAINMENT FRONTIER

IMPROVED INSTRUMENT PANEL FOR EASIER MONITORING

Many electronic functions are concentrated in the most convenient spot for operators to improve work efficiency. The highly-advanced infotainment system, a product of HCF's intensive information technology development, enables both productivity and comfort while working. HX Series is designed with the operator in mind.

* Photos may include optional equipment.

NEW FRONT SIDE AIR-CONDITIONING SYSTEM

The ventilation is designed for both warm and cool air reaching to operator's faces. It could help operators create more neat and enjoyable atmosphere through indoor air circulation.



NEW INTEGRATED AUDIO SYSTEM

The radio player with a USB-based MP3 player, an integrated Bluetooth hands-free feature, and a built-in microphone allow for phone calls while at work and in transit. The radio player is conveniently located on the right side of the operator to allow for improved access.



INTELLIGENT AND WIDE CLUSTER

The 8" capacitive-type display (like smartphone display) of HX Series is delivering excellent legibility. The centralized switches on the display allow convenience of checking temperature outside the cabin.



NEW AIR CONDITIONING SYSTEM

Front side Air Vent holes make operators more convenient and fresh through direct air flow to driver's face, foot and body.



MODERN COMFORT, SIMPLE AND SAFE SOLUTION

NEW CABIN FOR MORE COMFORT

Low noise, low vibration, and ergonomic design make the cabin space more comfortable and pleasant! With focus on safety and convenience of operators, HX Series allows rapid and safe equipment inspection anytime and anywhere, providing an optimal environment for operators to work.



Hi MATE

IT'S CONVENIENT, EASY AND VALUABLE

Hi MATE Hyundai's newly developed remote management system, utilizes GPS-satellite technology to provide customers with the highest level of service and product support available. Hi MATE enables users to remotely evaluate machine performance, access diagnostic information, and verify machine locations at the touch of a button.

WHAT ARE BENEFITS



INCREASE PRODUCTIVITY

It helps you operate machines in efficient. You can check the difference between total engine hours and actual working hours. See how productive your machines are and plan any required cost saving solutions. Hi MATE offers working information such as working / idling hours, fuel consumption and rate.



CONVENIENT AND EASY MONITORING

There is nothing much to do to monitor your machines. Just log on to the Hi MATE website or mobile application. Hi MATE allows you to watch your machines whenever and wherever you are.



SECURITY

Protect your machines from theft or unauthorized usage with Hi MATE. If the machine moves out of the Geo-fence boundary, you will get alerts.

HX520L with advanced technology ensures our safety on a construction site.



HX Series excavators are products of HCE's spirit of initiative, creativity, and strong drive. HCE engineers, who are the best in the industry, have worked tirelessly to offer a zero-defect product. The new HX Series reflects customers' needs in the field gleaned by thorough monitoring.

Our Unique remote management system allows customer to access machine operating information & obtain service & maintenance alerts at the touch of a button.

INCREASED PRODUCTIVITY

HI MATE empowers you to enhance the efficiency of your operations. Make better decisions by comparing the machine's operating time with its travelling, idling & breaker use duration.

CONVENIENT & EASY MONITORING

Enjoy round the clock & on the move access to your machine's information through the website or the mobile app.



FLUID CONDITION

04-Jul-2018

65°C

Hydraulic oil

140L

Fuel

80°C

Engine coolant

Track your machine's working temperature & fuel level

ENGINE OPERATION CHART

Engine Operation Chart

History of engine operation

Fuel used: 92.0 L
Fuel rate: 8.6 L

Track machine efficiency over time

KEY ON-OFF TIME

Key ON/OFF Time

First Key ON	04-Jul-2018 01:43:39
Last Key OFF	04-Jul-2018 07:03:00

Daily machine usage record

OPERATING HISTORY

Operating Hours

Engine run	10h 35m
Working	7h 58m
Travelling	0h 22m
Idling	2h 25m
Breaker	

SECURITY & FLEET MONITORING

Protect your machines from theft or unauthorized use. HI MATE's GPS feature allows you to create a geo-fence & alerts you if the machine moves out of the defined boundary.

Alarm Notice

Date: 04-Jun-2018 - 04-Jul-2018 | Level: 4 | Alarm Type: ALL

Date	Time	Hourmeter	Alarm Type	Alarm	Error Code (SPN+)	Description	Trouble Shooting
<input type="checkbox"/>	02-Jul-2018	20:51	831	W	706	(Warning) Battery Voltage low	
<input type="checkbox"/>	30-Jun-2018	05:31	797	W	706	(Warning) Battery Voltage low	
<input type="checkbox"/>	28-Jun-2018	00:48	759	W	706	(Warning) Battery Voltage low	
<input type="checkbox"/>	26-Jun-2018	07:32	746	W	313	(Warning) Engine Oil Pressure low	
<input type="checkbox"/>	17-Jun-2018	00:05	584	W	706	(Warning) Battery Voltage low	
<input type="checkbox"/>	13-Jun-2018	15:59	515	W	313	(Warning) Engine Oil Pressure low	
<input type="checkbox"/>	09-Jun-2018	02:31	441	W	706	(Warning) Battery Voltage low	
<input type="checkbox"/>	08-Jun-2018	22:40	439	W	706	(Warning) Battery Voltage low	
<input type="checkbox"/>	07-Jun-2018	16:49	417	W	313	(Warning) Engine Oil Pressure low	

Simplified troubleshooting, with automated alarm system

Maintenance Schedule

Maintenance Interval(H): ALL

	Interval	Search	Maintenance Request	Notice	Setting	Replace
<input type="checkbox"/>	Engine Oil Filter	500	2	1,354	06-Jul-2018	379
<input type="checkbox"/>	Fuel Filter Element	500	500	3	1,354	06-Jul-2018 379
<input type="checkbox"/>	Fuel Pre-Filter Element	500		2	1,354	06-Jul-2018 379
<input type="checkbox"/>	Hydraulic Tank Air Breather Element	250		1	1,354	06-Jul-2018 129
<input type="checkbox"/>	Air Cleaner Element	500		2	1,354	06-Jul-2018 379
<input type="checkbox"/>	Radiator Coolant	2,000				525
<input type="checkbox"/>	Swing Bearing Gear & Pinion Grease	1,000		1	1,354	06-Jul-2018 879
<input type="checkbox"/>	Transmission Oil	1,000				475 As
<input type="checkbox"/>	Transmission Oil Filter	1,000				475 As

Create your own service schedule & reminder alerts

PROACTIVE MAINTAINANCE

Access your machine's service & maintenance history with the utmost convenience. Plan your service schedules intelligently with our regular reminders.

ALARMS

Get notified of system alarms & protect your machine from critical faults & experience repairs.

building a comfortable tomorrow

11

SPECIFICATIONS

ENGINE

Maker / Model	CUMMINS / X12
Type	6 cylinder, water cooled, 4-cycle, turbocharged charge air cooled, direct injection, electronic controlled diesel engine.
Gross Power	250 kW (335 hp) at 2,100 rpm
Net Power	246 kW (330 hp) at 2,100 rpm
Max. Power	276 kW (370 hp) at 1,800 rpm
Peak Torque	1,674 N-m (1,235 lb-ft) at 1,400 rpm
Displacement	11.8 l (720 cu in)
Operating Altitude (w/o derate)	2,000 m (6,562 ft)

HYDRAULIC SYSTEM

MAIN PUMP

Type	Variable displacement axial piston pumps
Max. Flow	2 x 405 lpm (107.0 US gpm / 89.1 UK gpm) 1 x 23.9 lpm (6.2 US gpm / 5.3 UK gpm)
Sub-Pump For Pilot Circuit	Gear pump

Cross-sensing and fuel saving pump system.

HYDRAULIC MOTORS

Travel	Two speed axial pistons motor with brake valve and parking brake
Swing	Axial piston motor with automatic brake

RELIEF VALVE SETTING

Implement Circuits	330 kgf/cm ² (4,694psi)
Travel	360 kgf/cm ² (5,120psi)
Power Boost (Boom, Arm, Bucket)	360 kgf/cm ² (5,120psi)
Swing Circuit	285 kgf/cm ² (4,053psi)
Pilot Circuit	40 kgf/cm ² (569 psi)
Service Valve	Installed

HYDRAULIC CYLINDERS

No. of Cylinder Bore X Stroke	Boom 2-Ø170 × 1,580 mm
	Arm 1-Ø190 × 1,850 mm
	Bucket 1-Ø160 × 1,360 mm
	6,550 mm (21' 6") Boom & 2,550 mm (8' 4") Arm Only

DRIVES & BRAKES

Drive Method	Fully hydrostatic type
Drive Motor	Axial piston motor, in-shoe design
Reduction System	Planetary reduction gear
Max. Drawbar Pull	39,674 kgf (87,466 lbf)
Max. Travel Speed (High / Low)	3.4 km/hr (2.1 mph) / 5.5 km/hr (3.4 mph)
Gradeability	35° (70%)
Parking Brake	Multi wet disc

CONTROL

Pilot pressure operated joysticks and pedals with detachable lever provide almost effortless and fatigueless operation.

Pilot Control	Two joysticks with one safety lever (LH) : Swing and arm, (RH) : Boom and bucket (ISO)
Traveling and Steering	Two levers with pedals
Engine Throttle	Electric, dial type

SWING SYSTEM

Swing Motor	Axial piston motor
Swing Reduction	Planetary gear reduction
Swing Bearing Lubrication	Grease-bathed
Swing Brake	Multi wet disc
Swing Speed	8.8 rpm

COOLANT & LUBRICANT CAPACITY

	liter	US gal	UK gal
Fuel Tank	660	174.35	145.18
Engine Coolant	43	11.3	9.4
Engine Oil	34	9.0	7.5
Swing Device (Each)	7	1.8	1.5
Final Drive (Each)	12.5	3.3	2.7
Hydraulic System (Including Tank)	499	131.7	109.7
Hydraulic Tank	275	72.6	60.4

UNDERCARRIAGE

The X-leg type center frame is integrally welded with reinforced box-section track frames. The undercarriage includes lubricated rollers, idlers, track adjusters with shock absorbing springs and sprockets, and a track chain with double or triple grouser shoes.

Center Frame	X - Leg Type
Track Frame	Pentagonal Box Type
No. of Shoes on Each Side	53 EA
No. of Carrier Roller on Each Side	2 EA
No. of Track Roller on Each Side	9 EA
No. of Rail Guard on Each Side	2 EA

OPERATING WEIGHT (APPROXIMATE)

Operating weight, including 6,550 mm (21' 6") boom, 2,550 mm (8' 4") arm, SAE heaped 3.2m³ (4.18yd³) bucket, and all standard equipment.

OPERATING

Shoes		Operating Weight	Ground Pressure
Type	Width mm(in)	kg (lb)	kgf/cm ² (psi)
Triple Grouser	600 (24")		0.87 (12.3)

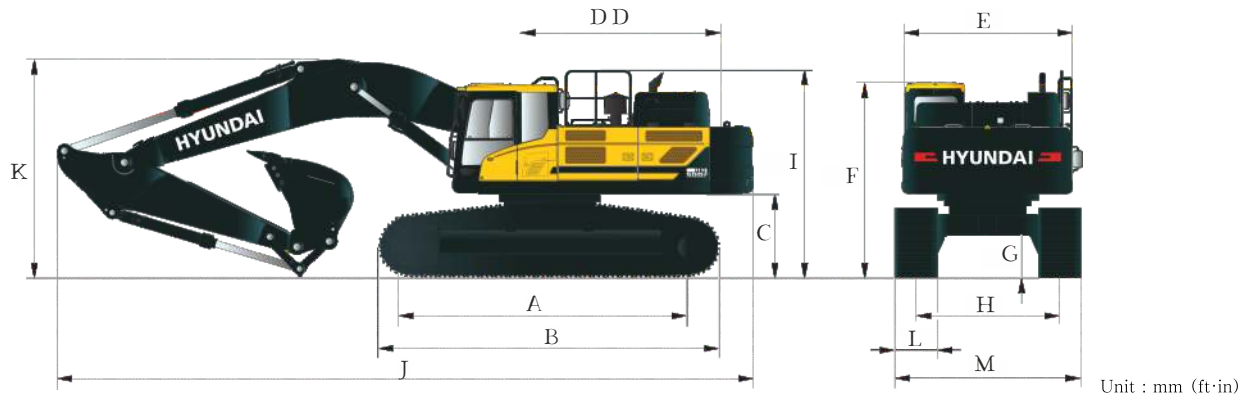
AIR CONDITIONING SYSTEM

The air condition system for the machine contains the fluorinated greenhouse gas with global warming potential of R134a. (Global Warming Potential : 1,430) The system hold 0.8 kg refrigerant consisting of a CO₂ equivalent of 1.21 kg. For more information, Please refer to the manual.

> DIMENSIONS & WORKING RANGE

HX520L DIMENSIONS

Boom 6.55 m (21' 6") and Arm 2.55 m (8' 4")



Unit : mm (ft·in)

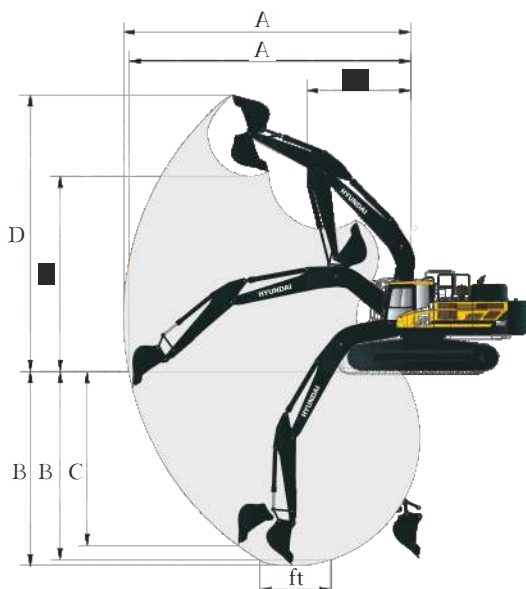
A Tumbler Distance	4,470 (14' 8")
*B Overall Length of Crawler	5,490 (18' 0")
*C Ground Clearance of Counter Weight	1,445 (4' 7")
D Tail Swing Radius	3,800 (12' 6")
D' Rear-end Length	3,745 (12' 3")
E Overall Width of Upper Structure	2,980 (9' 9")
*F Overall Height of Cab	3,420 (11' 2")
*G Min. Ground Clearance	780 (2' 6")
H Track gauge	2,740 (9' 0")
*I Overall Height of Guardrail	3,600 (11' 8")

Boom Length	6,550 (21' 6")
Arm Length	2,550 (8' 4")
J Overall Length	11,680 (38' 4")
*K Overall Height of Boom	3,920 (12' 7")
L Track Shoe Width	600 (24")
M Overall Width	3,340 (10' 11")

* This figure includes the size of grouser.

HX520L WORKING RANGE

Unit : mm (ft·in)



Boom length	6,550 (21' 6")
Arm length	2,550 (8' 4")
A Max. digging reach	10,870 (35' 8")
A' Max. digging reach on ground	10,610 (34' 8")
B Max. digging depth	6,380 (20' 9")
B' Max. digging depth (8° level)	6,210 (20' 4")
C Max. vertical wall digging depth	4,760 (15' 6")
D Max. digging height	10,760 (35' 3")
E Max. dumping height	7,290 (23' 9")
F Min. swing radius	4,440 (14' 7")

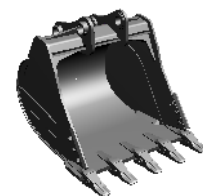
HX520L



GP
3.2 (4.18)



HD
2.79 (3.65)



Rock-HD
2.43 (3.18)


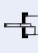

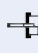

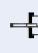

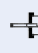

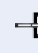


LIFTING CAPACITIES

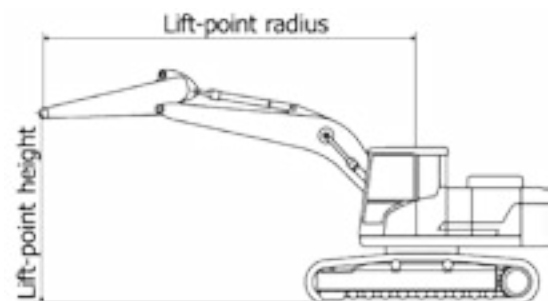
 Rating over-front  Rating over-side or 360 degree

HX520L MONO BOOM

6.55 m (21' 6") boom, 2.55 m (8' 4") arm equipped with 600 mm (24") triple grouser shoe.

Lift-point height (m/ft)		Lift-point radius								At max. reach		
		3.0 m (9.8 ft)		4.5 m (14.8 ft)		6.0 m (19.7 ft)		7.5 m (24.6 ft)		Capacity		Reach m (ft)
												
9.0 m	kg									*13,880	*13,880	5.79
29.5 ft	lb									*30,600	*30,600	(19.0)
7.5 m	kg					*13,190	*13,190			*12,600	11,120	7.22
24.6 ft	lb					*29,080	*29,080			*27,780	24,520	(23.7)
6.0 m	kg					*13,980	*13,980	*12,410	10,350	*12,070	9,040	8.12
19.7 ft	lb					*30,820	*30,820	*27,360	22,820	*26,610	19,930	(26.6)
4.5 m	kg			*20,370	*20,370	*15,430	14,080	*12,960	10,050	*11,830	7,970	8.67
14.8 ft	lb			*44,910	*44,910	*34,020	31,040	*28,570	22,160	*26,080	17,570	(28.4)
3.0 m	kg					*16,960	13,300	*13,650	9,670	*11,730	7,440	8.94
9.8 ft	lb					*37,390	29,320	*30,090	21,320	*25,860	16,400	(29.3)
1.5 m	kg					*17,890	12,720	*14,120	9,340	*11,690	7,300	8.94
4.9 ft	lb					*39,440	28,040	*31,130	20,590	*25,770	16,090	(29.3)
Ground	kg			*21,030	18,920	*17,850	12,420	*14,030	9,140	*11,620	7,520	8.69
Line	lb			*46,360	41,710	*39,350	27,380	*30,930	20,150	*25,620	16,580	(28.5)
-1.5 m	kg	*15,060	*15,060	*21,280	19,020	*16,720	12,370	*13,030	9,120	*11,390	8,210	8.15
-4.9 ft	lb	*33,200	*33,200	*46,910	41,930	*36,860	27,270	*28,730	20,110	*25,110	18,100	(26.7)
-3.0 m	kg	*20,530	*20,530	*17,830	*17,830	*14,160	12,560			*10,720	9,750	7.26
-9.8 ft	lb	*45,260	*45,260	*39,310	*39,310	*31,220	27,690			*23,630	21,500	(23.8)

- Lifting capacity are based on ISO 10567.
- Lifting capacity of HX Series does not exceed 75% of tipping load with the machine on firm, level ground or 87% of full hydraulic capacity.
- The Lift-point is bucket pivot mounting pin on the arm (without bucket mass).
- (*) indicates load limited by hydraulic capacity.



BUCKET SELECTION GUIDE & DIGGING FORCE

BUCKETS

All buckets are welded with high-strength steel.



SAE heaped
m³ (yd³)



GP
3.2(4.18)



HD
2.79 (3.65)

Rock-HD
2.43 (3.18)

Capacity m ³ (yd ³)		Width mm (in)	Weight kg (lb)	Tooth (EA)	Recommendation mm (ft.in)	
					6,550 (21' 6") Boom	2,550 (8' 4") Arm
SAE Heaped	CECE Heaped					
(G) 3.2(4.18)	2.64 (3.45)	1,905 (75.0")	2,590 (5,710)	6		●
(H) 2.79 (3.65)	2.46 (3.22)	1,795 (70.7")	2,615 (5,770)	5		●
(R) 2.43 (3.18)	2.11 (2.76)	1,745 (69.0")	2,345 (5,170)	5		●

(G) General Purpose

(H) Heavy Duty

(R) Rock-HD

- : Applicable for materials with density of 2,100 kg/m³ (3,500 lb/yd³) or less
- : Applicable for materials with density of 1,800 kg/m³ (3,000 lb/yd³) or less
- : Applicable for materials with density of 1,500 kg/m³ (2,500 lb/yd³) or less
- ▲ : Applicable for materials with density of 1,200 kg/m³ (2,000 lb/yd³) or less

ATTACHMENTS

Booms and arms are of all-welded, low-stress, full-box section design.

6,550 mm (21' 6") boom and 2,550 mm (8' 4"), Hyundai Bucket are all-welded, high-strength steel implements.

DIGGING FORCE

Boom	Length	mm (ft.in)	6,550 (21' 6")	Remark
	Weight	kg (lb)	4,380 (9,660)	
Arm	Length	mm (ft.in)	2,550 (8' 4")	[]: Power Boost
	Weight	kg (lb)	2,450 (5,400)	
Bucket Digging Force	SAE	kN	240.3 [262.1]	
		kgf	24,500 [26,730]	
		lbf	54,010 [58,930]	
	ISO	kN	279.5 [304.9]	
		kgf	28,500 [31,090]	
		lbf	62,830 [68,540]	
Arm Crowd Force	SAE	kN	235.4 [256.7]	
		kgf	24,000 [26,180]	
		lbf	52,910 [57,720]	
	ISO	kN	246.2 [268.5]	
		kgf	25,100 [27,380]	
		lbf	55,340 [60,360]	

Note : Boom weight includes arm cylinder, piping, and pin
Arm weight includes bucket cylinder, linkage, and pin

STANDARD/OPTION

ENGINE	STD	OPT
Cummins X12	●	
HYDRAULIC SYSTEM		
INTELLIGENT POWER CONTROL (IPC)		
3-Power Mode, 2-Work Mode, User Mode	●	
Variable Power Control	●	
Pump Flow Control (Upgraded IPC)	●	
Electric Pump Independent Control	●	
Fuel Saving Kit	●	
Engine Auto Idle	●	
Engine Auto Shutdown Control	●	
CAB & INTERIOR		
ISO STANDARD CABIN		
Cabin Lights (LED)	●	
Rise-Up Type Windshield Wiper	●	
Radio / USB Player	●	
Handsfree Mobile Phone System with USB	●	
12 V Power Outlet (24 V DC to 12 V DC Converter)	●	
Electric Horn	●	
All-Weather Steel Cab with 360° Visibility	●	
Safety glass - Tempered glass	●	
Safety glass windows	●	
Sliding Fold-In Front Window	●	
Sliding Side Window (LH)	●	
Lockable Door	●	
Hot & Cool Box	●	
Storage Compartment	●	
Ashtray	●	
Transparent Cabin Roof-Cover	●	
Sun Visor	●	
Door and Cab Locks, One Key	●	
Pilot-Operated Joystick	●	
AUTOMATIC CLIMATE CONTROL		
Air Conditioner & Heater	●	
Defroster	●	
AUTOMATIC STARTING AID (AIR GRID HEATER) FOR WEATHER		
Starting Aid (Air Grid Heater) for Cold Weather	●	
CENTRALIZED MONITORING		
8" LCD Display - Normal type	●	
Engine Speed or Trip Meter / Accel	●	
Engine Coolant Temperature Gauge	●	
Max Power	●	
Low Speed / High Speed	●	
Auto Idle	●	
Check Engine	●	
Air Cleaner Clogging	●	
Indicators	●	
Eco Gauges	●	
Fuel Level Gauge	●	
Hyd. Oil Temperature Gauge	●	
Warnings	●	
Communication Error	●	
Low Battery	●	
Clock	●	
SEAT		
Mechanical Suspension	●	
CABIN ROPS (ISO 12117-2)		
Cabin front guard - Fine Mash	●	
Cabin top guard - Steel Top	●	

SAFETY	STD	OPT
Battery Master Switch	●	
Rearview Camera		●
Eight Front Working Lights Boom Mounted Cabin Mounted & Front Frame Mounted	●	
Travel Alarm	●	
Rear Work Lamp - One	●	
Beacon Lamp		●
Automatic Swing Brake	●	
Boom Holding System	●	
Arm Holding System	●	
Automatic Fire Suppression System - AFSS		●
Fatigue Monitoring system		●
Seat Belt reminder		●
Three Outside Rearview Mirror	●	
OTHERS		
Removable Clean-Out Dust Net for Cooler	●	
Removable Reservoir Tank	●	
Fuel Pre-Filter	●	
Self-Diagnostics System	●	
Hi MATE (Remote Management System)	●	
Batteries (2 × 12 V × 200 AH)	●	
Fuel Filler Pump (50 lpm)		●
Single-Acting Piping Kit (Breaker, etc.)		●
Central Lubrication System		●
Accumulator for Lowering Work Equipment	●	
Tool Kit	●	
ATTACHMENT		
BOOMS		
6.55 m, 21' 6"	●	
ARMS		
2.55 m, 8' 4"	●	
UNDERCARRIAGE		
Lower Frame Under Cover (Normal)	●	
TRACK SHOES		
Triple Grousers Shoes (600 mm, 24")	●	
Track Rail Guard	●	

> NOTES

> DEALER NETWORK



- Excavator Dealers
- Forklift Dealers
- Overseas Dealers



HD Hyundai Construction Equipment India Pvt. Ltd.

Factory Location

Plot No. A-2, M.I.D.C. Chakan, Phase II,
Village: Khalumbre, Taluka: Khed, Dist: Pune-410501
E mail: hyundai.care@theconnectionsindia.com
Toll Free No.: 1800 209 8600

Please Contact

Scan the QR code
with your phone
camera & visit
our website



in.hd-hyundaice.com [@hdhyundaiceindia](https://www.instagram.com/hdhyundaiceindia) [/HDHyundaiCEIndia](https://www.facebook.com/HDHyundaiCEIndia) [@HyundaiCEIndia](https://www.linkedin.com/company/hyundai-construction-equipment-india-pvt-ltd/)
[/hyundai-construction-equipment-india-pvt-ltd/](https://www.linkedin.com/company/hyundai-construction-equipment-india-pvt-ltd/) [@HDHyundaiCEIndia](https://www.youtube.com/channel/UC...)

Oct 2023