

R215L **SMART PLUS**

OPERATING WEIGHT: 22200 kgs

GROSS POWER : 148 HP @ 2000 rpm

BUCKET CAPACITY: 0.87 - 1.7m³



R215L **SMART** *plus*

BEST-IN CLASS PERFORMANCE

- Advanced CAPO system
- Hydraulic flow summation
- Swing priority
- Regeneration system
- Excellent digging forces



OPERATOR COMFORT

- Spacious cabin
- Fully adjustable seat
- Enhanced visibility
- User friendly functionality



IMPROVED FUEL EFFICIENCY

- New ECO mode
- Fuel saving kit
- Electro hydraulic system
- Auto deceleration system
- Efficient breaker mode



DESIGNED FOR SMART WORK

INCREASED MACHINE DURABILITY

- Strengthened undercarriage
- Proven upper structure
- Forged ring body
- Reinforced front attachment



SIMPLIFIED MAINTENANCE

- Easy serviceability
- Extended maintenance
- Large capacity fluid tank
- Low life cycle cost



PARTS & SUPPORT

- Hyundai genuine parts
- Max parts availability
- On-site product support
- Remote Management System (Hi-Track)



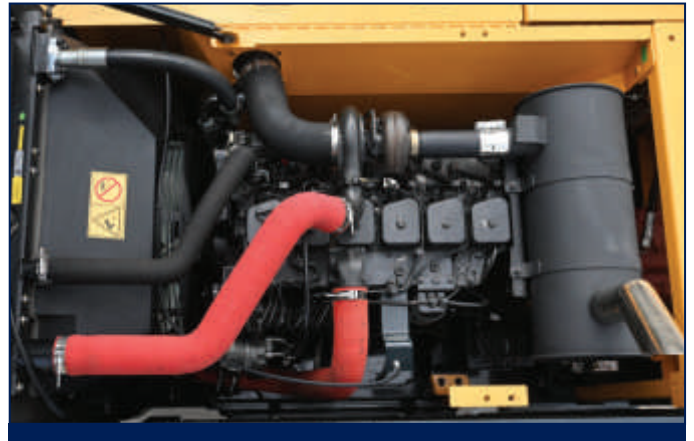
> PERFORMANCE

PRIDE AT WORK

Hyundai construction equipment strives to build state-of-the-art earthmoving equipment to give every operator maximum performance, more precision, versatile machine preferences, and proven quality.

New technologies designed to improve performance and precision, make the Hyundai excavator smooth, fast and easy to control.

Take pride in your work with Hyundai!



ENGINE

The water cooled, 4 cycle diesel, 6 cylinder in line, direct injection turbocharged, charge air cooled engine is built for power, reliability, efficiency and reduced emissions. The engine is manufactured to perform in wide range of heat, humidity and dust conditions without compromising productivity.





HYDRAULIC SYSTEM

Electro hydraulic control system provides wide range of flow at various workloads for paramount productivity. Open center design of Main Control Valve (MCV) ensures fast response and maximum efficiency in tough conditions.



CHARGE AIR COOLER

- Cools the air as it passes through turbocharger
- Resulting in cool high density, bigger mass of air being pumped to engine
- Increasing the burning efficiency

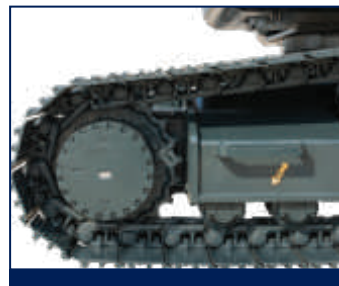
CHOICE OF OPERATING MODE

| Working Mode | Advantage |
|---------------------|---|
| P Mode | <ul style="list-style-type: none"> • Maximum Power • Fast Cycle time |
| S Mode | <ul style="list-style-type: none"> • Balance between power and fuel efficiency |
| Eco Mode | <ul style="list-style-type: none"> • Better fuel efficiency |
| Breaker Mode | <ul style="list-style-type: none"> • Sets pump flow to optimal level and boosts efficiency |



EFFICIENT COMBINED OPERATION

Inbuild flow summation system and Swing priority function leads to faster swing cycle results in excellent output



BEST IN CLASS TRAVEL PERFORMANCE

- Higher traction force
- Dual travel option
- High maneuverability

Traction Force : 21100 kgf



DIGGING FORCES

Higher output even in tough working conditions

- **Bucket - 15600 kgf**
- **Arm - 12500 kgf**

FUEL EFFICIENCY



IMPROVED FUEL EFFICIENCY

Advanced CAPO system, newly designed CMCU, power & working mode options results in excellent fuel efficiency.

FUEL SAVING KIT

- Monitor undue load and cut down losses.
- Provides better fuel efficiency



ARM REGENERATION SYSTEM

- Smooth operation
- Prevent cavitation
- Increased performance & fuel efficiency

NEGATIVE FLOW CONTROL

Optimum balance between pump and engine output for better fuel efficiency



ONE TOUCH IDLE & AUTO DECELERATION

Prevents fuel losses by reducing engine rpm during no-load condition

EXCLUSIVE BREAKER MODE

Excellent fuel saving due to exclusive power for breaker operation



OPERATOR COMFORT

OPERATOR DELIGHT

More space, better visibility, powerful air-conditioning and adjustable fully suspension seat, easy to access controls ensure that the operator can work for longer hours without stress or fatigue in the comfortable and safe working environment.



360 degree visibility, fully open sunroof, added side lamp & mirror ensure comfortable, safe working environment.

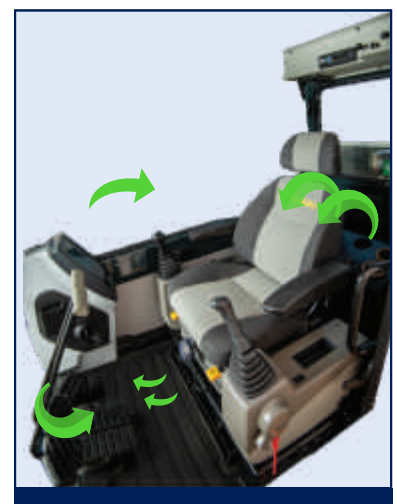
OPERATOR SEAT

Easily adjustable fully suspension seat with adjustable arm rest



SPACIOUS CABIN

More head room, large space, large door for easy entry and exit



INSTRUMENT PANEL

The user-friendly multi language option cluster making it easy to check all critical systems like

- Hydraulic oil temperature,
- Coolant temperature
- Fuel level
- Self diagnostic checks
- Maintenance management

to optimizing productivity needs ensuring fuel efficiency



SUN VISOR (OPTIONAL)



AIR CONDITIONER

- High performance air conditioner
- Improved AC ducting
- Water bottle cooling system

RELIABILITY



REINFORCED FRONT STRUCTURE

Use of specialized advance steel plates and reinforced design for higher strength and durability

ULTIMATE RELIABILITY



Reinforced idler frame



Lower frame belly guard



1 pc cast H link



Reinforced bucket link



HD TRACK LINK



ROCK GUARD



TANK SAFETY COVER



SWING & TRAVEL SYSTEM

Highly efficient Hyundai designed swing and travel system ensure maximum reliability and performance.



RELIABLE ELECTRICALS

- Dust and water proof connectors
- Longer component life



AIR PRE-CLEANER

- Removes dirt and Debris from air before entering air filter
- Improves air filter life
- Low maintenance cost





RUGGED UNDERCARRIAGE

X frame provides excellent resistance to torsional bending to enhance structure life

SERVICEABILITY

LEADING SERVICE INTERVAL

More efficient cooling system which extend service intervals , minimize operating cost and reduce machine down time.

| CHANGE INTERVAL | |
|------------------|---|
| Hydraulic oil | 5000 hrs |
| Hydraulic filter | 1000 hrs |
| Engine oil | 500 hrs  |
| Engine Filter | 500 hrs  |



IMPROVED COOLING EFFICIENCY

- Radiator and oil cooler are arranged side by side to maximize efficiency
- Easily accessible from ground level to clean

DURABLE MOUNTING PIN BUSH



LARGE LCD MONITOR

Operator can check the machine's vital signs without any difficulties

- **Maintenance Management**
Proactive maintenance
- **Self Diagnostic**
Reduces down time
- **Warning Indicator**
Ensures safe working



Hinged type front glass guard for easy cleaning

EASY ACCESSIBILITY

Easy access for maintenance means regular checks get done faster. Hyundai's SMART PLUS machines feature easy service access to increase uptime and reduce operating costs.



SAFETY - PEACE OF MIND AND OPERATOR CONFIDENCE

Cabin is integrally welded with low-stress using high strength steel to provide enhanced protection. Handrails and steps are provided for easy operation. Engine fan guard avoid chances of accidental injury.



COUNTER BALANCE VALVE

Works as a hydrostatic brake and prevents machine against accidental roll down in steep gradients.



BOOM & ARM HOLDING SYSTEM

Prevent attachments from drifting against gravity due to prolonged overhanging.



ANTI RESTART FUNCTION

Prevents starter from damage during engine operation



BATTERY DISCONNECT SWITCH

Cut off power during maintenance and protect batteries from excessive drain



AUTO ENGINE OVERHEAT PREVENTION

Auto Deceleration with activation of engine overheat warning to avoid catastrophic failure

> PARTS & SUPPORT

HYUNDAI GENUINE PARTS

Developed in synergy with our machines, Hyundai parts and lubricants ensure that you get the high levels of performance, reliability and safety that come with the complete Hyundai experience.

Enjoy the confidence and assurance of the most stringent testing procedures and the high quality manufacturing processes safeguarding your machine's health. Experience the versatility of our 200+ strong outlet network across India

WHY RISK IT?

Maximize profits and extend your machine's life.

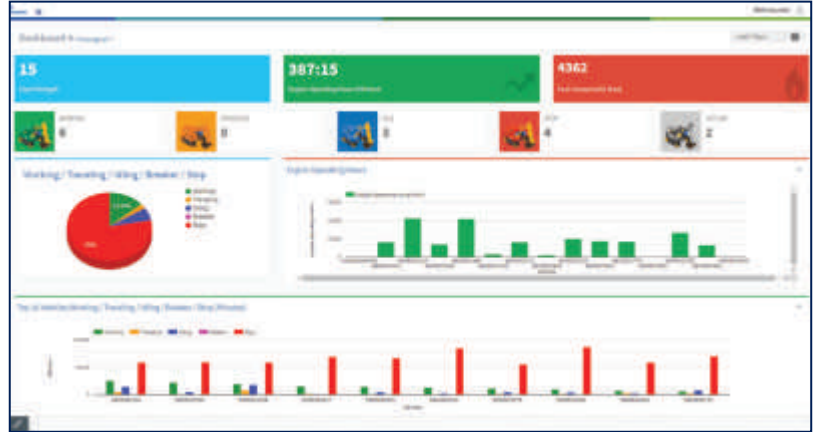


BENEFITS OF USING GENUINE HYUNDAI PARTS AND LUBRICANTS

- Genuine Hyundai Parts meet strict specifications and standards in Chemistry, Microstructure and Tensile Strength.
- Benefit from the continuous improvements and advancements made by Hyundai's technical team
- Improved performance of hydraulics and engine components
- Enjoy greater productivity with higher uptime
- Higher resale values
- Reduced oil consumption and unexpected breakdowns
- Enhanced component life



Our unique remote management system allows customers to access machine operating information & obtain service & maintenance alerts at the touch of a button

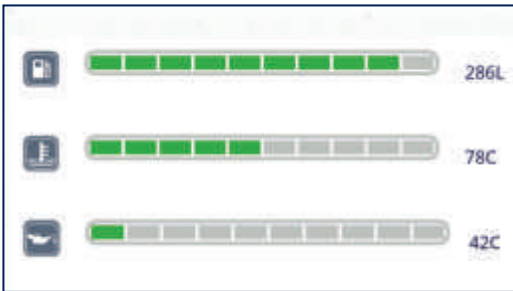


INCREASED PRODUCTIVITY

Remote management system empowers you to enhance the efficiency of your operations. Make better decision by comparing the machine's operating time with its travelling idling & breaker use duration.

CONVENIENT & EASY MONITORING

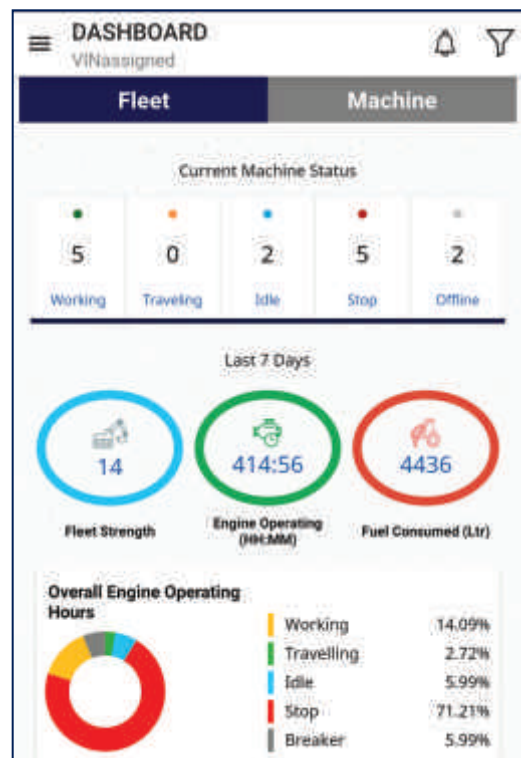
Enjoy round the clock and on the move access to your machine information through the website or mobile app.



PROACTIVE MAINTENANCE

Access your machines service & maintenance history with the utmost convenience. Plan your service schedules intelligently with our regular reminders.

| SELECT REPORTS | |
|------------------------|----------------------------------|
| Geo Zone In/Out Detail | <input checked="" type="radio"/> |
| Fault Code | <input type="radio"/> |
| Vehicle Usage Summary | <input type="radio"/> |
| Temperature Record | <input type="radio"/> |



ALARMS

Get notified of system alarms & protect your machine from critical faults & experience repairs.

SECURITY & FLEET MONITORING

Protect your machine from theft or unauthorized use. GPS features allows you to create a geo-fence & alerts you if the machine moves out of the defined boundary.

SPECIFICATIONS

Engine

| | | | |
|----------------------------|-----|---|--|
| Maker/Model | | Cummins6BTAA-5.9C | |
| Rated flywheel horse power | SAE | J1995 (Gross) J1349 (Net) | 148HP (110KW) @2000rpm 145HP (108KW) @2000rpm |
| Max Torque Displacement | | 63.7kgf.m(461 lb.ft) @1300rpm 5880cc | |

Hydraulic System

| | |
|---|--|
| Main pump | |
| Type | Two variable displacement piston pumps |
| Max. flow | 2x220 lpm |
| Sub-pump for pilot circuit | Gear pump |
| Cross-sensing & fuel saving pump system | |

Hydraulic Motors

| | |
|--------|--|
| Travel | Two speed axis piston motor with counter balance valve and parking brake |
| Swing | Axial piston motor with automatic brake |

Relief Valve Settings

| | |
|-------------------|------------------------|
| Implement Circuit | 330kgf/cm ² |
| Travel | 330kgf/cm ² |
| Swing Circuit | 240kgf/cm ² |
| Pilot Circuit | 35kgf/cm ² |
| Service valve | Installed |

Coolant & Lubricant Capacity

| REFILLING | LITER |
|-----------------------------------|-----------|
| Fuel tank | 340 |
| Engine coolant | 25.5 |
| Engine oil | 21 |
| Swing device | 5 |
| Final drive (each) | 5.8 |
| Hydraulic system / Hydraulic tank | 260 / 150 |

Drives & Brakes

| | |
|-----------------------------|-----------------------------------|
| Drive method | Fully hydrostatic type |
| Drive motor | Axial piston motor in-shoe design |
| Reduction system | Planetary reduction gear |
| Max.drawbar pull | 21100kgf (46500 lbf) |
| Max.travel speed (high/low) | 5.3kmph/3.4kmph |
| Gradeability | 35 Degree (70%) |
| Parking brake | Multi wet disc |

Undercarriage

X-Leg type centre frame is integrally welded with reinforced box section track frames. The undercarriage includes lubricated rollers, idlers, track adjusters with shock absorbing spring and sprockets and trackchain with triple grouse shoes.

| | |
|----------------------------------|---------------------|
| Centre frame | X-leg type |
| Track frame | Pentagonal box type |
| No. of shoes on each side | 49 |
| No. of carrier rollers each side | 2 |
| No. of track rollers each side | 9 |
| No. of rail guard each side | 2 |

Swing System

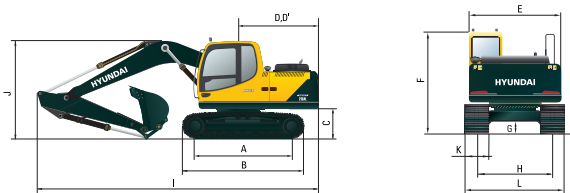
| | |
|---------------------------|--------------------------|
| Swing motor | Axial piston motor |
| Swing reduction | Planetary gear reduction |
| Swing bearing lubrication | Grease bathed |
| Swing brake | Multi wet disc |
| Swing speed | 11 rpm |

Operating Weight

| | | |
|--------------------|--------------------------|---|
| Shoe Width mm (in) | Operating weight kg (lb) | Ground pressure kgf/cm ² (psi) |
| 600 mm (24") | 22,200 (48,943) | 0.47 (6.68) |

Dimensions

(mm)



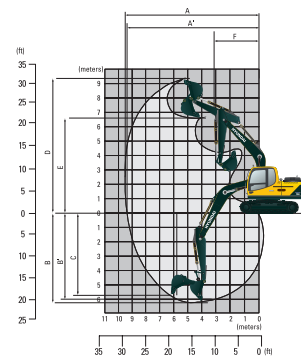
| | | |
|----|------------------------------------|------|
| A | Tumbler distance | 3640 |
| B | Overall distance of crawler | 4440 |
| C | Ground clearance of counter weight | 1060 |
| D | Tail swing radius | 2830 |
| D' | Rear-end length | 2770 |
| E | Overall width of upper structure | 2700 |
| F | Overall height of cabin | 2920 |
| G | Min. ground clearance | 480 |
| H | Track gauge | 2390 |
| I | Overall length | 9570 |
| J | Overall height of boom | 3110 |
| K | Track shoe width | 600 |
| L | Overall width | 2990 |

Working Ranges

(mm)

| Arm length (std.) | 2400 | 2920 | Boom length (std.) | 5680 |
|-------------------|------|------|--------------------|------|
|-------------------|------|------|--------------------|------|

| | | | |
|----|--------------------------------|------|------|
| A | Maximum Digging Reach. | 9480 | 9950 |
| A' | Digging Reach on Ground. | 9300 | 9780 |
| B | Max Digging Depth | 6050 | 6570 |
| B' | Max- Digging Depth (8' level). | 5840 | 6390 |
| C | Vertical Wall Digging Depth | 5100 | 5710 |
| D | Maximum Digging Height | 9470 | 9720 |
| E | Maximum Dumping Height. | 6670 | 6910 |
| F | Minimum Swing Radius. | 3580 | 3510 |



| | |
|----------------------|----------|
| Bucket Digging Force | 15600kgf |
| Arm Crowd Force | 12500kgf |

LIFTING CAPACITIES

LIFTING CAPACITIES R215L SMART PLUS



Rating over-front



Rating over-side

Boom: 5.68 m (18' 8") / Arm: 2.4 m (7' 10") / Bucket: 1.05 m³ (1.20yd³) SAE heaped/ Shoe: 600mm(24") triple grouser with 3800 kg (8,308 lb) counterweight

| Load point height m (ft) | Load radius | | | | | | | | | | At max. reach | | | |
|-----------------------------|----------------|--|---------------|--------|---------------|-------|-----------------|-------|-----------------|------|---------------|--------|-----------------|--------|
| | 1.5 m (5.0 ft) | | 3 m (10.0 ft) | | 4.5 m (15 ft) | | 6.0 m (20.0 ft) | | 7.5 m (25.0 ft) | | Capacity | | Reach m (ft) | |
| | | | | | | | | | | | | | | |
| 7.5m (24.6ft) | kg | | | | | | | | | | | *3970 | *3970 | 5.70 |
| | lb | | | | | | | | | | | *8750 | *8750 | (18.7) |
| 6.0m (19.7ft) | kg | | | | | | *3900 | *3900 | | | | *3920 | 3470 | 6.91 |
| | lb | | | | | | *8600 | *8600 | | | | *8640 | 7650 | (22.7) |
| 4.5m (14.8ft) | kg | | | | *5070 | *5070 | *4320 | *4320 | *4010 | 2890 | | *3950 | 2780 | 7.64 |
| | lb | | | | 11180 | 11180 | *9520 | *9520 | *8840 | 6370 | | *8710 | 6130 | (25.1) |
| 3.0m (9.8ft) | kg | | | | *6630 | 6490 | *5020 | 4080 | *4280 | 2770 | | 4150 | 2440 | 8.02 |
| | lb | | | | *14620 | 14310 | *11070 | 8990 | *9440 | 6110 | | 9150 | 5380 | (26.3) |
| 1.5m (4.9ft) | kg | | | | *8060 | 5910 | *5740 | 3810 | 4540 | 2640 | | 3990 | 2310 | 8.11 |
| | lb | | | | *17770 | 13030 | *12650 | 8400 | 10010 | 5820 | | 8800 | 5090 | (26.6) |
| 0.0m (0.0ft) | kg | | *6120 | *6120 | *8790 | 5630 | 6240 | 3620 | 4440 | 2550 | | 4090 | 2340 | 7.90 |
| | lb | | *13490 | *13490 | *19380 | 12410 | 13760 | 7980 | 9790 | 5620 | | 9020 | 5160 | (25.9) |
| -1.5m (-4.9ft) | kg | | *11080 | *11080 | *8810 | 5570 | 6250 | 3560 | | | | 4520 | 2590 | 7.39 |
| | lb | | *24430 | *24430 | *19420 | 12280 | 13780 | 7850 | | | | 9960 | 5710 | (24.2) |
| -3.0m (-9.8ft) | kg | | *11680 | 11570 | *8120 | 5670 | *5870 | 3620 | | | | *5250 | 3230 | 6.49 |
| | lb | | *25750 | 25510 | *17900 | 12500 | *12940 | 7980 | | | | *11570 | 7120 | (21.3) |
| -4.5m (-14.8ft) | kg | | *8970 | *8970 | *6300 | 5970 | | | | | | *5510 | 5080 | 5.00 |
| | lb | | *19780 | *19780 | *13890 | 13160 | | | | | | *12150 | 11200 | (16.4) |

Boom : 5.68m (18 8") / Arm : 2.92m (7' 10") / Bucket 1.05m³ / 600mm Triple Grouser Shoe with 3800kg CWT

| Lift-point height m/ft) | Lift-point radius | | | | | | | | | | At max. reach | | | |
|----------------------------|-------------------|--------|--------------|--------|---------------|--------|---------------|--------|---------------|-------|---------------|--------|-----------------|--------|
| | 1.5m (4.9ft) | | 3.0m (9.8ft) | | 4.5m (14.8ft) | | 6.0m (19.7ft) | | 7.5m (24.6ft) | | Capacity | | Reach m (ft) | |
| | | | | | | | | | | | | | | |
| 7.5m (24.6ft) | kg | | | | | | | | | | | *2690 | *2690 | 6.44 |
| | lb | | | | | | | | | | | *5930 | *5930 | (21.1) |
| 6.0m (19.7ft) | kg | | | | | | *3400 | *3400 | *2630 | *2630 | | *2540 | *2540 | 7.53 |
| | lb | | | | | | *7500 | *7500 | *5800 | *5800 | | *5600 | *5600 | (24.7) |
| 4.5m (14.8ft) | kg | | | | | | *3870 | *3870 | *3630 | 2950 | | *2540 | 2450 | 8.20 |
| | lb | | | | | | *8530 | *8530 | *8000 | 6500 | | *5600 | 5400 | (26.9) |
| 3.0m (9.8ft) | kg | | *9610 | *9610 | *5970 | *5970 | *4630 | 4170 | *3980 | 2810 | | *2670 | 2170 | 8.56 |
| | lb | | *21190 | *21190 | *13160 | *13160 | *10210 | 9190 | *8770 | 6190 | | *5890 | 4780 | (28.1) |
| 1.5m (4.9ft) | kg | | *5920 | *5920 | *7570 | 6090 | *5440 | 3870 | 4400 | 2660 | | *2940 | 2050 | 8.64 |
| | lb | | *13050 | *13050 | *16690 | 13430 | *11990 | 8530 | 9700 | 5860 | | *6480 | 4520 | (28.3) |
| 0.0m (0.0ft) | kg | | *6910 | *6910 | *8590 | 5710 | *6070 | 3650 | 4430 | 2540 | | *3400 | 2070 | 8.45 |
| | lb | | *15230 | *15230 | *18940 | 12590 | *13380 | 8050 | 9770 | 5600 | | *7500 | 4560 | (27.7) |
| -15m (-4.9ft) | kg | *6250 | *6250 | *10050 | *10050 | *8880 | 5580 | 6240 | 3550 | 4370 | 2490 | 3980 | 2260 | 7.97 |
| | lb | *13780 | *13780 | *22160 | *22160 | *19580 | 12300 | 13760 | 7830 | 9630 | 5490 | 8770 | 4980 | (26.1) |
| -3.0m (-9.8ft) | kg | *9780 | *9780 | *12630 | 11450 | *8490 | 5620 | *6120 | 3560 | | | 4760 | 2730 | 7.15 |
| | lb | *21560 | *21560 | *27840 | 25240 | *18720 | 12390 | *13490 | 7850 | | | 10490 | 6020 | (23.4) |
| -4.5m (-14.8ft) | kg | | *10420 | *10420 | *7180 | 5820 | | | | | | *5160 | 3900 | 5.83 |
| | lb | | *22970 | *22970 | *15830 | 12830 | | | | | | *11380 | 8600 | (19.1) |

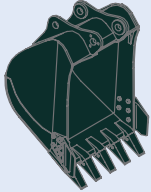
- Lifting capacity are based on ISO 10567.
- Lifting capacity of the Robex Series does not exceed 75% of tipping load with the machine on firm, level ground or 87% of full hydraulic capacity.
- The Lift-point is a hook (standard equipment) located on the back of the bucket.
- (*) indicates the load limited by hydraulic capacity.

SPECIFICATIONS

BUCKETS

All buckets are welded with high-strength steel.

GENERAL PURPOSE



*1.05 m³ (1.37 yd³) / 1.20 m³ (1.57 yd³) / 0.92 m³ (1.20 yd³)

HEAVY DUTY



0.87 m³ (1.14 yd³) / 0.95 m³ (1.25 yd³)

| Capacity m ³ (yd ³) | | Width mm (in) | | Weight kg (lb) | Recommendation mm (ft.in) | |
|---|----------------|-------------------------|----------------------|-------------------|---------------------------|-------------------|
| SAE heaped | CECE heaped | Without side cutters | With side cutters | | 5,680 (18' 8") Boom | |
| | | | | | *2,400 (7' 10") Arm | 2,920 (9' 7") Arm |
| * 1.05 (1.37) | 0.92 (1.20) | 1250 (49.2) | 1370 (53.9) | 807 (1779) | ● | ■ |
| ● 0.95 (1.25) | 0.83 (1.09) | 1240 (44.9) | - | 1026 (2262) | ● | ■ |
| ● 0.87 (1.14) | 0.75 (0.98) | 1140 (44.9) | - | 946 (2086) | ● | ■ |
| 1.20 (1.57) | 1.05 (1.37) | 1400 (55.1) | 1520 (59.8) | 811 (1788) | ▲ | - |
| 0.92 (1.20) | 0.80 (1.05) | 1150 (45.3) | 1270 (50.0) | 785 (1731) | ● | ■ |

* : Standard backhoe bucket
 ● : Rock-Heavy duty bucket

● Applicable for materials with density of 2,000 kg/m³ (3,370 lb / yd³) or less
 ■ Applicable for materials with density of 1,600 kg/m³ (2,700 lb / yd³) or less
 ▲ Applicable for materials with density of 1,100 kg/m³ (1,850 lb / yd³) or less

ATTACHMENT

Boom and arms are welded with a low-stress, full-box section design 5.68m (18' 8'') mono boom and 2.4m (7' 10''), 2.92m (9' 7'') Arms available. Buckets are all-welded, high-strength steel equipments.

DIGGING FORCE

| Arm | Length | mm (ft.in) | *2,400 (7' 10'') | 2,920 (9' 7'') |
|----------------------|--------|------------|------------------|----------------|
| | Weight | kg (lb) | 720 (1,590) | 750 (1,650) |
| Bucket digging force | SAE | kN | 133.4 | 133.4 |
| | | kgf | 13,600 | 13,600 |
| | | lbf | 29,980 | 29,980 |
| | ISO | kN | 153.0 | 154.0 |
| | | kgf | 15,600 | 15,700 |
| | | lbf | 34,390 | 34,610 |
| Arm crowd force | SAE | kN | 117.7 | 99.0 |
| | | kgf | 12,000 | 10,100 |
| | | lbf | 26,460 | 22,270 |
| | ISO | kN | 122.6 | 103.0 |
| | | kgf | 12,500 | 10,500 |
| | | lbf | 27,560 | 23,150 |

Note: Arm weight includes bucket cylinder and linkage *Standard arm

STANDARD / OPTIONAL LIST

Standard Equipment

ISO standard cabin
 All-weather steel cab with all-around visibility
 Safety glass windows
 Sliding fold-in front window
 Sliding side window
 Air-conditioner
 Accessory box

Computer Aided Power Optimization (New CAPO) system

3-power mode, 2-work mode
 Auto deceleration & one touch deceleration system
 Auto engine overheat prevention system
 Self diagnostic system
 Centralized monitoring
 LCD display
 Engine speed
 Clock & Error code
 Mobile charging point
 Fuel level indicator
 Engine coolant temperature indicator
 Hyd. oil temperature indicator

Warning

Fuel level
 Engine oil pressure
 Engine coolant temperature
 Hyd. oil temperature
 Low battery
 Air cleaner clogging
 Door and cab locks, one key
 One outside rearview mirror
 DUAL Channel Fully adjustable suspension seat
 Slidable joystick Pilot-operated
 Two front working lights and two cabin work lights
 Electric horn
 Batteries (2 x 12V x 100 AH)
 Battery master switch
 Removable clean out screen for oil cooler
 Automatic swing brake
 Removable reservoir tank
 Fuel pre-filter
 Boom holding system
 Arm holding system

Counter weight (3800kg)
 Radio / USB player
 24V Power Socket
 Mono boom (5.68m, 18' 8")
 Arm (2.4m, 7' 10")
 Standard bucket (1.05GP m³, 1.37 yd³)
 Track shoes (600mm, 24")
 Track rail guard
 Cabin front protector
 Operator kit
 Tool kit
 Remote management system (Hi-Track)

Optional Equipment

Sun visor for cabin inside
 Beacon lamp
 Single acting piping kit
 Fuel Refilling Pump

Various optional Arms (SAE heaped)

Arm (2.92 m, 9' 7")

Various optional Buckets (SAE heaped)

Light duty bucket (1.20 m³, 1.57 yd³)
 Rock Heavy Duty bucket (0.95 m³, 1.25 yd³)
 Rock Heavy Duty bucket (0.87 m³, 1.14 yd³)
 General Purpose bucket (0.92 m³, 1.20 yd³)
 Coal Bucket (1.7 m³, 2.2 yd³)

Travel alarm
 Operator seat belt
 Fire extinguisher
 Rock Breaker
 Clamshell Bucket
 Quick Coupler
 Orange Grapple



HD Hyundai Construction Equipment India Pvt. Ltd.

Factory Location

Plot No. A-2, M.I.D.C. Chakan, Phase II,
 Village: Khalumbre, Taluka: Khed, Dist: Pune-410501
 E mail: hyundai.care@theconnectionsindia.com
 Toll Free No.: 1800 209 8600

Please Contact

Scan the QR code
 with your phone
 camera & visit
 our website



July 2023