

R215 **SMART PLUS**

OPERATING WEIGHT: 21700 kgs

GROSS POWER : 140 HP @ 2000 rpm

BUCKET CAPACITY: 0.92 - 1.0m³



R215

SMART *PLUS*

BEST-IN CLASS PERFORMANCE

- Advanced CAPO system
- Hydraulic flow summation
- Swing priority
- Regeneration system
- Excellent digging forces



OPERATOR COMFORT

- Spacious cabin
- Fully adjustable seat
- Enhanced visibility
- User friendly functionality

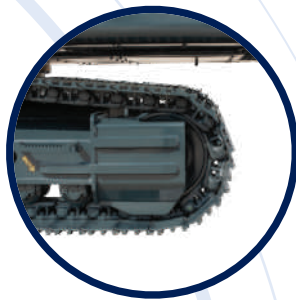


IMPROVED FUEL EFFICIENCY

- New ECO mode
- Fuel saving kit
- Electro hydraulic system
- Auto deceleration system
- Efficient breaker mode



DESIGNED FOR SMART WORK



INCREASED MACHINE DURABILITY

- Strengthened undercarriage
- Proven upper structure
- Forged ring body
- Reinforced front attachment



SIMPLIFIED MAINTENANCE

- Easy serviceability
- Extended maintenance
- Large capacity fluid tank
- Low life cycle cost



PARTS & SUPPORT

- Hyundai genuine parts
- Max parts availability
- On-site product support
- Remote Management System (Hi-Track)

> PERFORMANCE

PRIDE AT WORK

Hyundai construction equipment strives to build state-of-the-art earthmoving equipment to give every operator maximum performance, more precision, versatile machine preferences, and proven quality.

New technologies designed to improve performance and precision, make the Hyundai excavator smooth, fast and easy to control.

Take pride in your work with Hyundai!

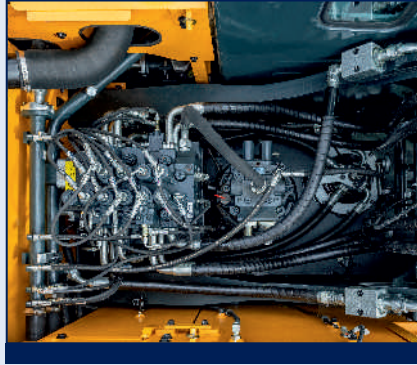


ENGINE

The water cooled, 4 cycle diesel, 6 cylinder in line, direct injection turbocharged engine is built for power, reliability, efficiency.

The engine is manufactured to perform in wide range of heat, humidity and dust conditions without compromising productivity.





HYDRAULIC SYSTEM

Electro hydraulic control system provides wide range of flow at various workloads for paramount productivity. Open center design of Main Control Valve (MCV) ensures fast response and maximum efficiency in tough conditions.

CHOICE OF OPERATING MODE

Working Mode	Advantage
P Mode	<ul style="list-style-type: none"> • Maximum Power • Fast Cycle time
S Mode	<ul style="list-style-type: none"> • Balance between power and fuel efficiency
Eco Mode	<ul style="list-style-type: none"> • Higher fuel efficiency
Breaker Mode	<ul style="list-style-type: none"> • Sets pump flow to optimal level and boosts efficiency

BEST IN CLASS DIGGING FORCES

Higher output even in tough working conditions

- **Bucket - 15600 kgf**
- **Arm - 12500 kgf**



BEST IN CLASS TRAVEL PERFORMANCE

- Higher traction force
- Dual travel option
- High maneuverability

Traction Force : 21100 kgf

EFFICIENT COMBINED OPERATION

Inbuild flow summation system and **swing priority** function leads to faster swing cycle results in excellent output

FUEL EFFICIENCY



IMPROVED FUEL EFFICIENCY

Advanced CAPO system, newly designed CMCU, power & working mode options results in excellent fuel efficiency.

FUEL SAVING KIT

- Monitor undue load and cut down losses.
- Provides better fuel efficiency



ARM REGENERATION SYSTEM

- Smooth operation
- Prevent cavitation
- Increased performance & fuel efficiency

NEGATIVE FLOW CONTROL

Optimum balance between pump and engine output for better fuel efficiency



ONE TOUCH IDLE & AUTO DECELERATION

Prevents fuel losses by reducing engine rpm during no-load condition

EXCLUSIVE BREAKER MODE

Excellent fuel saving due to exclusive power for breaker operation



New Cluster



OPERATOR COMFORT

OPERATOR DELIGHT

More space, better visibility, powerful air-conditioning and adjustable fully suspension seat, easy to access controls ensure that the operator can work for longer hours without stress or fatigue in the comfortable and safe working environment.



SPACIOUS CABIN

More head room, large space, large door for easy entry and exit

OPERATOR SEAT

Easily adjustable fully suspension seat with adjustable arm rest



360 degree visibility, fully open sunroof, added side lamp & mirror ensure comfortable, safe working environment.

INSTRUMENT PANEL

The user-friendly multi language option cluster making it easy to check all critical systems like

- Hydraulic oil temperature,
- Coolant temperature
- Fuel level
- Self diagnostic checks
- Maintenance management

to optimizing productivity needs ensuring fuel efficiency



SUN VISOR(OPTIONAL)



AIR CONDITIONER

- AC Front Vent
- Hour Meter
- 24V Socket
- High performance air conditioner
- Improved AC ducting
- Water bottle cooling system



> RELIABILITY



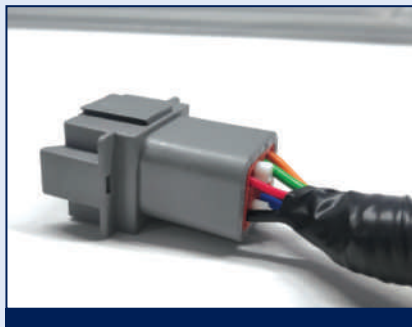
REINFORCED FRONT STRUCTURE

Use of specialized advance steel plates and reinforced design for higher strength and durability



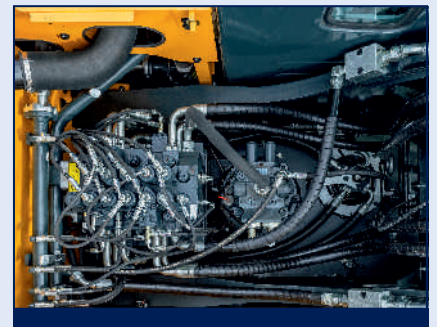
RUGGED UNDERCARRIAGE

X frame provides excellent resistance to torsional bending to enhance structure life



RELIABLE ELECTRICALS

- Dust and water proof connectors
- Longer component life



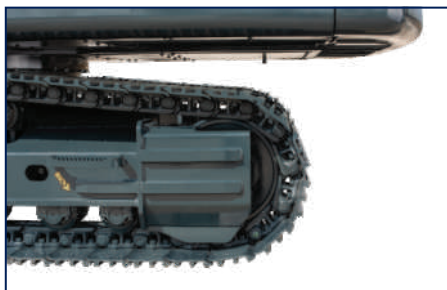
SWING & TRAVEL SYSTEM

Highly efficient Hyundai designed swing and travel system ensure maximum reliability and performance.



AIR PRE-CLEANER

- Removes dirt and Debris from air before entering air filter
- Improves air filter life
- Low maintenance cost



REINFORCED IDLER FRAME



LOWER FRAME BELLY GUARD



CASTED BUCKET CONTROL LINK



FORGED RING BODY

SERVICEABILITY

LEADING SERVICE INTERVAL

More efficient cooling system which extend service intervals , minimize operating cost and reduce machine down time.

CHANGE INTERVAL	
Hydraulic oil	5000 hrs
Hydraulic filter	1000 hrs
Engine oil	500 hrs New!
Engine Filter	500 hrs New!



IMPROVED COOLING EFFICIENCY

- Radiator and oil cooler are arranged side by side to maximize efficiency
- Easily accessible from ground level to clean



LARGE LCD MONITOR

Operator can check the machine's vital signs without any difficulties

- **Maintenance Management**
Proactive maintenance
- **Self Diagnostic**
Reduces down time
- **Warning Indicator**
Ensures safe working

DURABLE MOUNTING PIN BUSH



New!

Hinged type front glass guard for easy cleaning

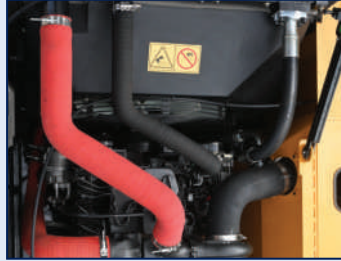
EASY ACCESSIBILITY

Easy access for maintenance means regular checks get done faster. Hyundai's SMART PLUS machines feature easy service access to increase uptime and reduce operating costs.



SAFETY - PEACE OF MIND AND OPERATOR CONFIDENCE

Cabin is integrally welded with low-stress using high strength steel to provide enhanced protection. Handrails and steps are provided for easy operation. Engine fan guard avoid chances of accidental injury.



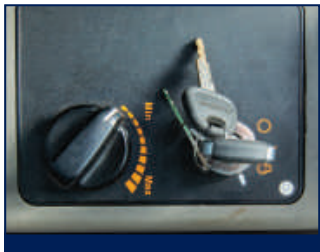
COUNTER BALANCE VALVE

Works as a hydrostatic brake and prevents machine against accidental roll down in steep gradients.



BOOM & ARM HOLDING SYSTEM

Prevent attachments from drifting against gravity due to prolonged overhanging.

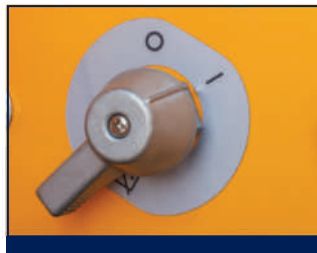


ANTI RESTART FUNCTION

Prevents starter from damage during engine operation



AUTO ENGINE OVERHEAT & WARM UP FUNCTION



BATTERY DISCONNECT SWITCH



LOWER BELLY GUARD



TANK SAFETY COVER

> PARTS & SUPPORT

HYUNDAI GENUINE PARTS

Developed in synergy with our machines, Hyundai parts and lubricants ensure that you get the high levels of performance, reliability and safety that come with the complete Hyundai experience.

Enjoy the confidence and assurance of the most stringent testing procedures and the high quality manufacturing processes safeguarding your machine's health. Experience the versatility of our 200+ strong outlet network across India

WHY RISK IT?

Maximize profits and extend your machine's life.

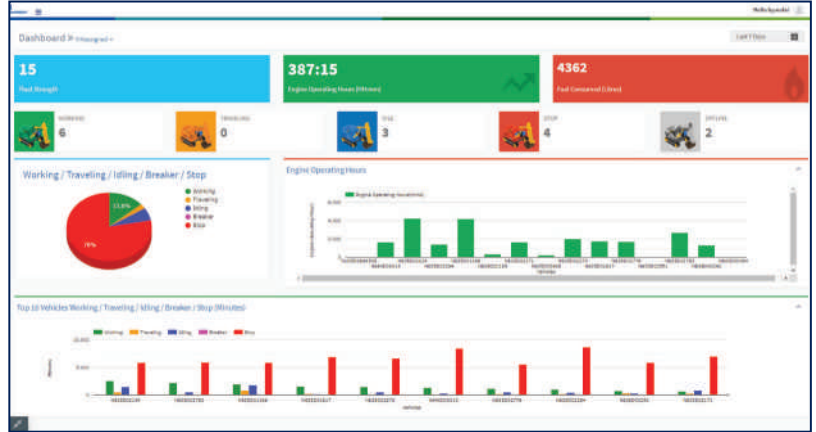
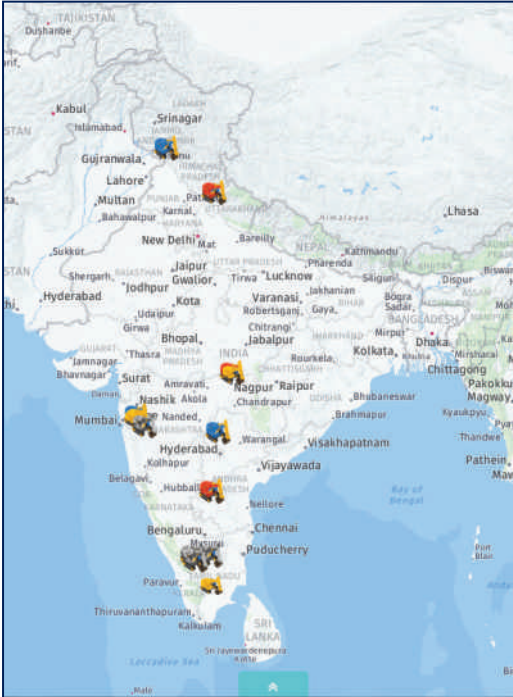


BENEFITS OF USING GENUINE HYUNDAI PARTS AND LUBRICANTS

- Genuine Hyundai Parts meet strict specifications and standards in Chemistry, Microstructure and Tensile Strength.
- Benefit from the continuous improvements and advancements made by Hyundai's technical team
- Improved performance of hydraulics and engine components
- Enjoy greater productivity with higher uptime
- Higher resale values
- Reduced oil consumption and unexpected breakdowns
- Enhanced component life



Our unique remote management system allows customers to access machine operating information & obtain service & maintenance alerts at the touch of a button

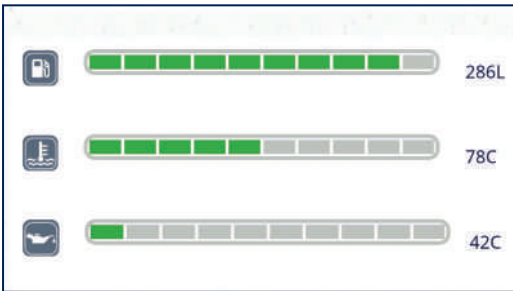


INCREASED PRODUCTIVITY

Remote management system empowers you to enhance the efficiency of your operations. Make better decision by comparing the machine's operating time with its travelling idling & breaker use duration.

CONVENIENT & EASY MONITORING

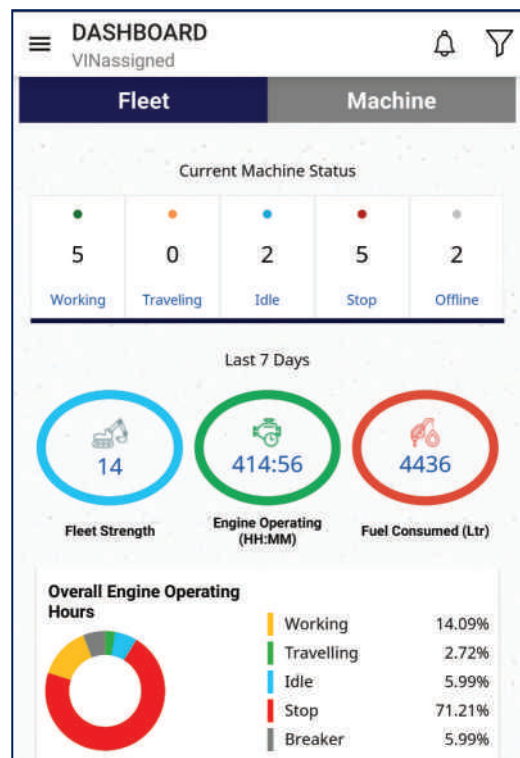
Enjoy round the clock and on the move access to your machine information through the website or mobile app.



PROACTIVE MAINTENANCE

Access your machines service & maintenance history with the utmost convenience. Plan your service schedules intelligently with our regular reminders.

SELECT REPORTS	
Geo Zone In/Out Detail	<input checked="" type="radio"/>
Fault Code	<input type="radio"/>
Vehicle Usage Summary	<input type="radio"/>
Temperature Record	<input type="radio"/>



ALARMS

Get notified of system alarms & protect your machine from critical faults & experience repairs.

SECURITY & FLEET MONITORING

Protect your machine from theft or unauthorized use. GPS features allows you to create a geo-fence & alerts you if the machine moves out of the defined boundary.

SPECIFICATIONS

Engine

Maker/Model		Cummins6BT5.9-C	
Rated flywheel horse power	SAE	J1995 (Gross) J1349 (Net)	140HP (104KW) @2000rpm 136HP (101KW) @2000rpm
Max Torque	57.6kgf.m @1600rpm		
Displacement	5880cc		

Hydraulic System

Main pump	
Type	Two variable displacement piston pumps
Max. flow	2x220 lpm
Sub-pump for pilot circuit	Gear pump
Cross-sensing & fuel saving pump system	

Hydraulic Motors

Travel	Two speed axis piston motor with counter balance valve and parking brake
Swing	Axial piston motor with automatic brake

Relief Valve Settings

Implement Circuit	330kgf/cm ²
Travel	330kgf/cm ²
Swing Circuit	240kgf/cm ²
Pilot Circuit	35kgf/cm ²
Service valve	Installed

Coolant & Lubricant Capacity

REFILLING	LITER
Fuel tank	340
Engine coolant	25.5
Engine oil	21
Swing device	5
Final drive (each)	5.8
Hydraulic system / Hydraulic tank	260 / 150

Drives & Brakes

Drive method	Fully hydrostatic type
Drive motor	Axial piston motor in-shoe design
Reduction system	Planetary reduction gear
Max.drawbar pull	21100kgf (46500 lbf)
Max.travel speed (high/low)	5.3kmph/3.4kmph
Gradeability	35 Degree (70%)
Parking brake	Multi wet disc

Undercarriage

X-Leg type centre frame is integrally welded with reinforced box section track frames. The undercarriage includes lubricated rollers, idlers, track adjusters with shock absorbing spring and sprockets and trackchain with triple grouse shoes.

Centre frame	X-leg type
Track frame	Pentagonal box type
No. of shoes on each side	48
No. of carrier rollers each side	2
No. of track rollers each side	8
No. of rail guard each side	2

Swing System

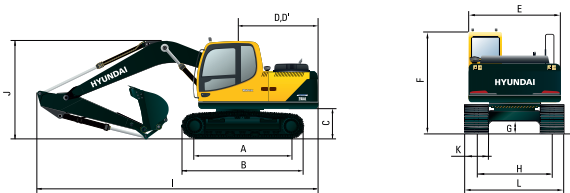
Swing motor	Axial piston motor
Swing reduction	Planetary gear reduction
Swing bearing lubrication	Grease bathed
Swing brake	Multi wet disc
Swing speed	11 rpm

Operating Weight

Shoe Width mm (in)	Operating weight kg (lb)	Ground pressure kgf/cm ² (psi)
600 mm (24")	21,700 (47,840)	0.47 (6.68)

Dimensions

(mm)



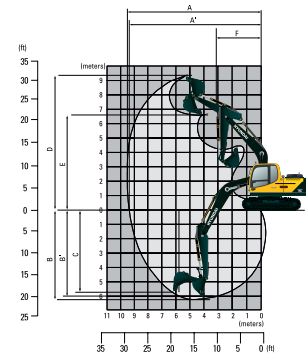
A	Tumbler distance	3550
B	Overall distance of crawler	4360
C	Ground clearance of counter weight	1060
D	Tail swing radius	2830
D'	Rear-end length	2770
E	Overall width of upper structure	2700
F	Overall height of cabin	2920
G	Min. ground clearance	480
H	Track gauge	2390
I	Overall length	9570
J	Overall height of boom	3110
K	Track shoe width	600
L	Overall width	2990

Working Ranges

(mm)

Arm length (std.)	2400	2920	Boom length (std.)	5680
-------------------	------	------	--------------------	------

A	Maximum Digging Reach.	9480	9950
A'	Digging Reach on Ground.	9300	9780
B	Max Digging Depth	6060	6570
B'	Max- Digging Depth (8' level).	5850	6390
C	Vertical Wall Digging Depth	5110	5710
D	Maximum Digging Height	9460	9720
E	Maximum Dumping Height.	6660	6910
F	Minimum Swing Radius.	3580	3510



Bucket Digging Force	15600kgf
Arm Crowd Force	12500kgf

LIFTING CAPACITIES

LIFTING CAPACITIES R215 SMART PLUS



Rating over-front



Rating over-side

Boom: 5.68 m (18' 8") / Arm: 2.4 m (7' 10") / Bucket: 1.00 m³ (1.20yd³) SAE heaped/ Shoe: 600mm(24") triple grouser with 3,800kg (8,308 lb) counterweight

Lift-point height (m/ft)		Lift-point radius										At max. reach					
		1.5 m (5.0 ft)		3 m (9.8 ft)		4.5 m (14.8 ft)		6.0 m (19.7 ft)		7.5 m (24.6 ft)		Capacity		Reach			
														m (ft)			
7.5m (24.6ft)	kg														*3970	*3970	5.69
	lb														*8750	*8750	(18.7)
6.0m (19.7ft)	kg							*3900	*3900						*3920	3510	6.91
	lb							*8600	*8600						*8640	7740	(22.7)
4.5m (14.8ft)	kg					*5060	*5060	*4310	*4310	*4000	2920				*3950	2810	7.64
	lb					*11160	*11160	*9500	*9500	*8820	6440				*8710	6190	(25.1)
3.0m (9.8ft)	kg					*6620	6540	*5010	4120	*4280	2800				4000	2470	8.02
	lb					*14590	14420	*11050	9080	*9440	6170				8820	5450	(26.3)
1.5m (4.9ft)	kg					*8050	5960	*5740	3840	4350	2670				3830	2330	8.11
	lb					*17750	13140	12650	8470	9590	5890				8440	5140	(26.6)
0.0m (0.0ft)	kg			*6090	*6090	*8790	5680	6050	3660	4250	2580				3910	2370	7.91
	lb			*13430	*13430	*19380	12520	13340	8070	9370	5690				8620	5220	(25.9)
-1.5m (-4.9ft)	kg			*11040	*11040	*8810	5620	5980	3590						4330	2620	7.40
	lb			*24340	*24340	*19420	12390	13180	7910						9550	5780	(24.3)
-3.0m (-9.8ft)	kg			*11690	11660	*8130	5720	*5880	3660						*5240	3260	6.50
	lb			*25770	25710	*17920	12610	*12960	8070						*11550	7190	(21.3)
-4.5m (-14.8ft)	kg			*9000	*9000	*6320	6020								*5510	5100	5.01
	lb			*19840	*19840	*13930	13270								*12150	11240	(16.4)

Boom : 5.68 m (18 8") / Arm : 2.92m (7' 10") / Bucket 1.00m3 / 600mm Triple Grouser Shoe with 3800kg CWT

Lift-point height (m/ft)		Lift-point radius										At max. reach					
		1.5m (4.9ft)		3.0m (9.8ft)		4.5m (14.8ft)		6.0m (19.7ft)		7.5m (24.6ft)		Capacity		Reach			
														m (ft)			
7.5m (24.6ft)	kg														*2700	*2700	6.43
	lb														*5950	*5950	(21.1)
6.0m (19.7ft)	kg							*3400	*3400	*2610	*2610				*2540	*2540	7.52
	lb							*7500	*7500	*5750	*5750				*5600	*5600	(24.7)
4.5m (14.8ft)	kg							*3870	*3870	*3630	2970				*2540	2470	8.20
	lb							*8530	*8530	*8000	6550				*5600	5450	(26.9)
3.0m (9.8ft)	kg			*9580	*9580	*5960	*5960	*4620	4200	*3980	2840				*2670	2190	8.55
	lb			*21120	*21120	*13140	*13140	*10190	9260	*8770	6260				*5890	4830	(28.1)
1.5m (4.9ft)	kg			*5930	*5930	*7570	6140	*5430	3910	4370	2690				*2930	2070	8.64
	lb			*13070	*13070	*16690	13540	*11970	8620	9630	5930				*6460	4560	(28.3)
0.0m (0.0ft)	kg			*6890	*6890	*8590	5760	*6060	3690	4250	2570				*3400	2100	8.45
	lb			*15190	*15190	*18940	12700	*13360	8140	9370	5670				*7500	4630	(27.7)
-15m (-4.9ft)	kg	*6230	*6230	*10020	*10020	*8880	5630	5970	3580	4190	2520				3810	2280	7.97
	lb	*13730	*13730	*22090	*22090	*19580	12410	13160	7890	9240	5560				8400	5030	(26.2)
-3.0m (-9.8ft)	kg	*9750	*9750	*12640	11540	*8490	5670	5980	3590						4550	2750	7.15
	lb	*21500	*21500	*27870	25440	*18720	12500	13180	7910						10030	6060	(23.5)
-4.5m (-14.8ft)	kg			*10440	*10440	*7190	5870								*5160	3920	5.84
	lb			*23020	*23020	*15850	12940								*11380	8640	(19.2)

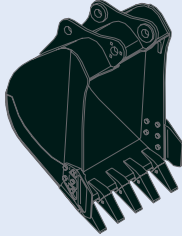
- Lifting capacity is based on ISO 10567.
- Lifting capacity of the Robex Series does not exceed 75% of the tipping load with the machine on firm, level ground or 87% of full hydraulic capacity.
- The Lift-point is a hook (standard equipment) located on the back of the bucket.
- (*) indicates the load limited by hydraulic capacity.

SPECIFICATIONS

BUCKETS

All buckets are welded with high-strength steel.

GENERAL PURPOSE



SAE heaped 1.00m³(1.20 yd³)

HEAVY DUTY



SAE heaped 0.92m³(1.1 yd³)

Capacity m ³ (yd ³)		Width mm (in)		Weight. kg (lb)	Recommendation mm (ft -in)	
SAE heaped	CECE heaped	Without side cutters	With side cutters		5.68m (18' 8") Boom	
					*2.4m (7' 10") Arm	2.92m (9' 7") Arm
* 1.00m ³ (1.20yd ³)GP	0.90m ³ (1.08yd ³)	1211 (47'7")	1330 (52'4")	805 (1775)	●	■
◎ 0.92m ³ (1.1yd ³)HD	0.8m ³ (0.96yd ³)	1145 (45'1")	1272 (50'1")	1020 (2249)	●	■

* : Standard backhoe bucket
 ◎ : Rock Heavy Duty bucket

● Applicable for materials with density of 2,000 kg/m³ (3,370lb yd³) or less
 ■ Applicable for materials with density of 1,600 kg/m³ (2,700 lb/yd³) or less

ATTACHMENT

Boom and arms are welded with a low-stress, full-box section design 5.68m (18' 8'') mono boom and 2.4m (7' 10''), 2.92m (9' 7'') Arms available. Buckets are all-welded, high-strength steel equipments.

DIGGING FORCE

Arm	Length	mm (ft.in)	*2,400 (7' 10")	2,920 (9' 7")
		Weight	kg (lb)	720 (1,590)
Bucket digging force	SAE	kN	133.4	133.4
		kgf	13,600	13,600
		lbf	29,980	29,980
	ISO	kN	153.0	154.0
		kgf	15,600	15,700
		lbf	34,390	34,610
Arm crowd force	SAE	kN	117.7	99.0
		kgf	12,000	10,100
		lbf	26,460	22,270
	ISO	kN	122.6	103.0
		kgf	12,500	10,500
		lbf	27,560	23,150

Note: Arm weight includes bucket cylinder and linkage *Standard arm

STANDARD / OPTIONAL LIST

Standard Equipment

ISO standard cabin
 All-weather steel cab with all-around visibility
 Safety glass windows
 Sliding fold-in front window
 Sliding side window
 Air-conditioner
 Accessory box

Computer Aided Power Optimization (New CAPO) system

3-power mode, 2-work mode
 Auto deceleration & one touch deceleration system
 Auto engine overheat prevention system
 Self diagnostic system
 Centralized monitoring
 LCD display
 Engine speed
 Clock & Error code
 Mobile charging point
 Fuel level indicator
 Engine coolant temperature indicator
 Hyd. oil temperature indicator

Warning

Fuel level
 Engine oil pressure
 Engine coolant temperature
 Hyd. oil temperature
 Low battery
 Air cleaner clogging
 Door and cab locks, one key
 One outside rearview mirror
 Fully adjustable suspension seat
 Pilot-operated joystick
 Two front working lights and two cabin work lights
 Electric horn
 Batteries (2 x 12V x 100 AH)
 Battery master switch
 Removable clean out screen for oil cooler
 Automatic swing brake
 Removable reservoir tank
 24V Power Socket

Fuel pre-filter
 Boom holding system
 Arm holding system
 Counter weight (3800kg)
 Mono boom (5.68m, 18' 8")
 Arm (2.4m, 7' 10")
 Standard bucket (1.0GP m³, 1.20 yd³)
 Track shoes (600mm, 24")
 Track rail guard
 Cabin front protector
 Radio / USB player
 Operator kit
 Tool kit
 Remote management system (Hi-Track)

Optional Equipment

Sun visor for cabin inside
 Beacon lamp
 Single acting piping kit
 Fuel Refilling Pump

Various optional Arms (SAE heaped)

Arm (2.92 m, 9' 7")

Various optional Buckets (SAE heaped)

Rock Heavy Duty Bucket (0.92 m³, 1.1 yd³)
 Travel alarm
 Operator seat belt
 Fire extinguisher
 Rock Breaker
 Clamshell Bucket
 Quick Coupler
 Orange Grapple



HD Hyundai Construction Equipment India Pvt. Ltd.

Factory Location

Plot No. A-2, M.I.D.C. Chakan, Phase II,
 Village: Khalumbre, Taluka: Khed, Dist: Pune-410501
 E mail: hyundai.care@theconnectionsindia.com
 Toll Free No.: 1800 209 8600

Please Contact

in.hd-hyundaice.com @hdhyundaiceindia /HDHyundaiCEIndia @HyundaiCEIndia
 /hyundai-construction-equipment-india-pvt-ltd/ @hyundaiconstructionequipme9481

Scan the QR code
 with your phone
 camera & visit
 our website



Oct 2023