

R130 **SMART**

OPERATING WEIGHT: 12100 kgs

GROSS POWER : 94 HP @ 1950 rpm

BUCKET CAPACITY: 0.45 - 0.65m³



building a comfortable tomorrow

R130 SMART

BEST-IN CLASS PERFORMANCE

- Advanced CAPO system
- 3 Power Modes (High/Standard/Light)
- Swing Priority
- Regeneration system
- Excellent digging forces



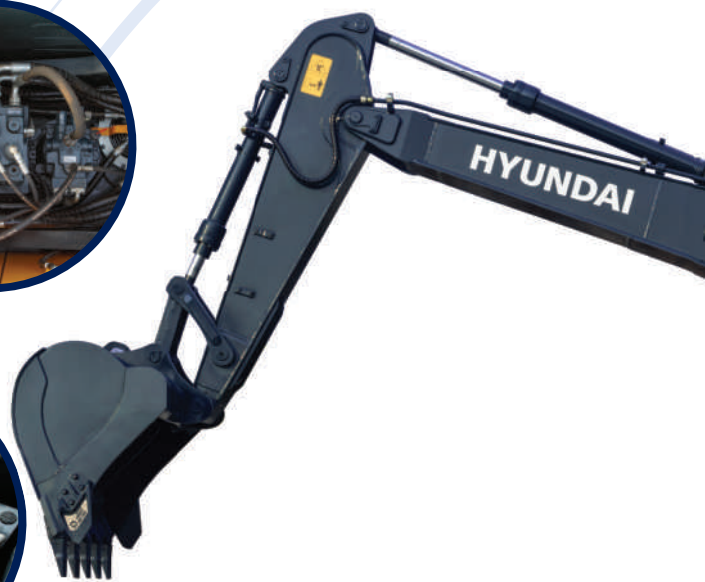
OPERATOR COMFORT

- Spacious AC cabin
- Fully adjustable seat
- Sunvisor **New!**
- User friendly digital cluster



IMPROVED FUEL EFFICIENCY

- Electro hydraulic system
- One touch deceleration
- Auto deceleration system
- Efficient breaker mode



DESIGNED FOR SMART WORK



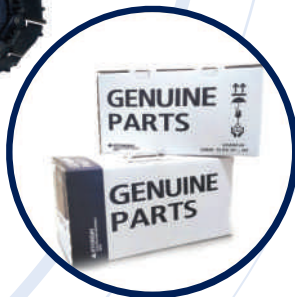
INCREASED MACHINE DURABILITY

- Strengthened undercarriage
- Rugged upper structure
- Durable components
- Reinforced front attachment



SIMPLIFIED MAINTENANCE

- Easy serviceability
- Extended maintenance
- Large capacity fluid tank
- Low life cycle cost



PARTS & SUPPORT

- Hyundai genuine parts
- Max parts availability
- On-site product support
- Remote management system (Hi-Track)

> PERFORMANCE

IMPROVED PERFORMANCE

The well-matched combination of the Kirloskar engine with CAPO system has resulted in an unbeatable Hydraulic Excavator that offers great Performance.

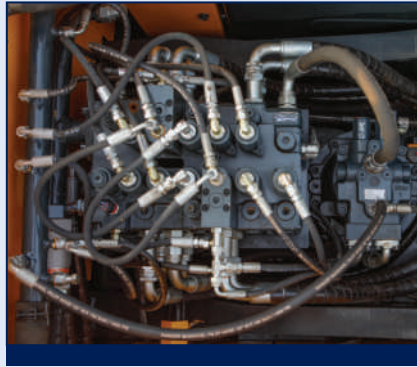
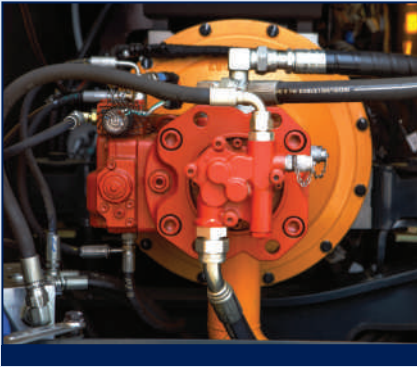


ENGINE

The 94 HP, Turbocharged Kirloskar engine coupled with proven electro hydraulic system and intelligent CAPO system ensures optimum utilization of power and increased fuel efficiency.



R130 SMART



ADVANCE HYDRAULIC SYSTEM

Hydraulic pressure sensing system provides wide range of flow at various workloads. Open center Main Control Valve (MCV) ensures faster response and maximum efficiency. Travel & swing motor provides excellent mobility and faster cycle time

CHOICE OF OPERATING MODE

Working Mode	Advantage
H Mode	<ul style="list-style-type: none"> • Uses 100% engine power for mass production
S Mode	<ul style="list-style-type: none"> • Uses 85% engine power for all work
L Mode	<ul style="list-style-type: none"> • Uses 70% of engine power for reduced fuel consumption
Breaker Mode	<ul style="list-style-type: none"> • Sets pump flow to optimal level and boosts efficiency

EFFICIENT COMBINED OPERATION

Inbuild flow summation system and **Swing priority** function leads to faster swing cycle results in excellent output

BEST IN CLASS DIGGING FORCES

Higher output even in tough working condition

- **Bucket - 9200 kgf**
- **Arm - 6410 kgf**



TOP-CLASS TRAVEL PERFORMANCE

- Higher traction force
- Dual travel option
- High maneuverability

Drawbar Pull - 10400 kgf

FUEL EFFICIENCY



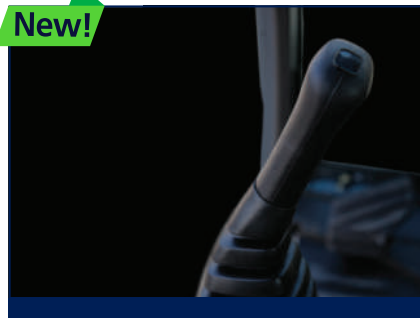
IMPROVED FUEL EFFICIENCY

New MCV, Improved MCU with auto deceleration function, Advanced CAPO system, Power & working mode options results in excellent fuel efficiency



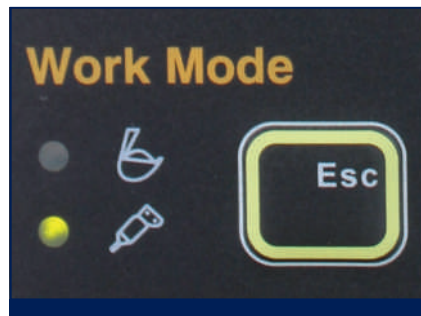
ARM REGENERATION SYSTEM

- Smooth operation
- Prevent cavitation
- Increased performance & fuel efficiency



ONE TOUCH IDLE & AUTO DECELERATION

Prevents fuel losses by reducing engine rpm during no-load condition



EXCLUSIVE BREAKER MODE

Excellent fuel saving due to exclusive power for breaker operation

OPERATOR COMFORT

EXCELLENT VISIBILITY

360 degree visibility, fully open sunroof, ergonomic controls, adjustable fully suspension seat, air conditioning system (Opt) ensure comfortable, safe working environment.



MODERN INSTRUMENT PANEL

- Hydraulic oil temperature
- Fuel level
- Engine oil temperature
- 12 warning indicators
- Self diagnostic
- Maintenance management

New!



SUNVISOR



RUBBER COATED TRAVEL PEDAL



CABIN TOP LIGHT



MUSIC SYSTEM



10 STAGE RPM DIAL



SUNROOF



AIR CONDITIONING SYSTEM (OPTIONAL)

- 9 air ducts
- Advanced AC console
- Allround air circulation

OPERATOR SEAT

Easily adjustable Full suspension seat with adjustable arm rest

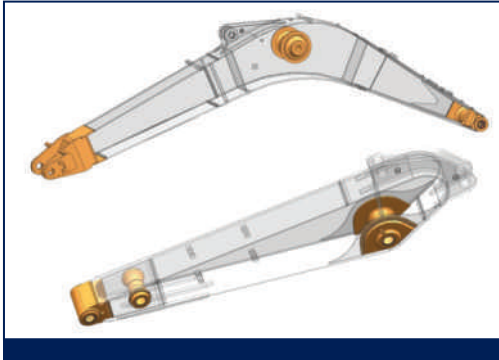
SMOOTH LEVER CONTROLS

Ergonomically placed lever controls reduces fatigue over long working hours.

SPACIOUS CABIN

More head room, large space, large door for easy entry and exit

RELIABILITY



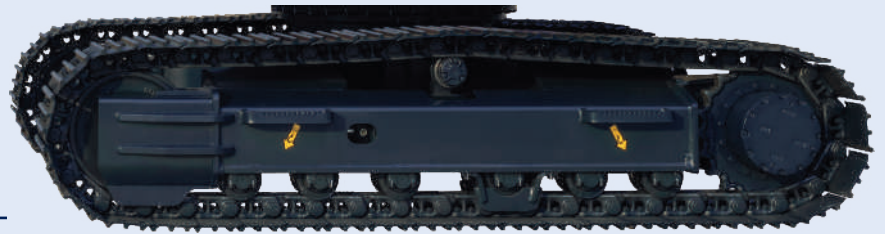
REINFORCED FRONT STRUCTURE

Use of specialized advance steel plates and reinforced design for higher strength and durability

- Thicker plates
- Casted component
- Internal baffle plate
- Added wear plates on arm
- Reinforced bucket

RUGGED UNDERCARRIAGE

X frame provides excellent resistance to torsional bending to enhance structure life



TRACK GUIDES : Reinforced track guide on each side of track

BELLY GUARD : Protects rotary joint and hydraulic hoses from external damage

REINFORCED IDLER GUIDE AREA : Prevents deformation caused by impact of loose stones

CASTED IDLER : The track spring and the casted idler have been joined directly to achieve optimum structural integrity



BALANCED SWING SYSTEM

Swing gear uses a ball bearing to absorb radial and thrust load



RELIABLE ELECTRICALS

- Dust and water proof connectors
- Longer component life



LONG LIFE STRUCTURE

Tank cover & air breather safety guard protects from external damages.

The reinforced upper structure and lower frame are build to withstand tougher working conditions and contribute towards a well-balanced & solid machine while operating in adverse terrains.

Reinforced front attachment supports excellent bucket digging and arm crowd force.

SERVICEABILITY

EXTENDED MAINTENANCE INTERVAL

Enhanced filtration system extends hydraulic life upto 5000 hrs and Engine oil life upto 500 hrs, which reduces the maintenance cost

CHANGE INTERVAL

Hydraulic oil	5000 hrs
Hydraulic filter	1000 hrs
Engine oil	500 hrs
Engine Filter	500 hrs

MAINTENANCE MANAGEMENT

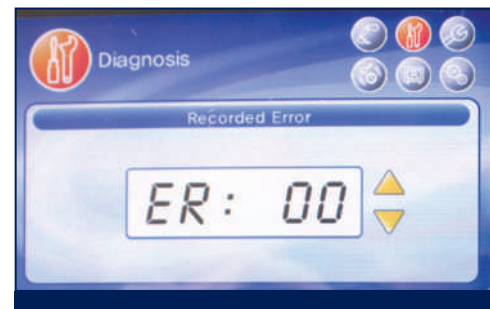


LARGE LCD MONITOR

Operator can check the machine's vital signs without any difficulties

- **Maintenance Management**
Proactive maintenance
- **Self Diagnostic**
Reduces down time
- **Warning Indicator**
Ensures safe working

SELF DIAGNOSTIC SYSTEM



AIR PRE-CLEANER

The large capacity air cleaner removes 99% of airborne particles, reducing the risk of engine contamination. Reliability is improved by a new radial seal design.

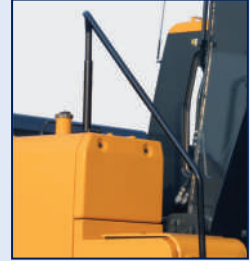
EASY ACCESSIBILITY

Hyundai's SMART machines feature helps easy service access to increase machine uptime and reduces maintenance cost

> SAFETY

SAFETY - MORE THAN A PEACE OF MIND AND CONFIDENCE

Cabin is integrally welded using high strength steel to provide enhanced protection. Handrails and steps are provided for easy operation. Anti-slip pads provide safety against skidding while climbing machine.



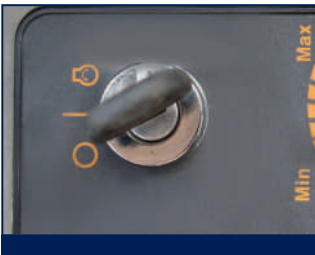
COUNTER BALANCE VALVE

Works as a hydrostatic brake and prevents machine against accidental roll down in steep gradients.



BOOM & ARM HOLDING SYSTEM

Prevent attachments from drifting against gravity due to prolonged overhanging.

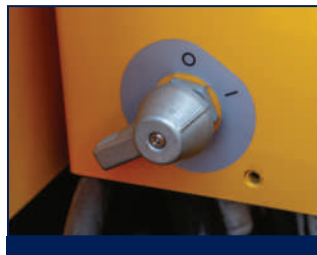


ANTI RESTART FUNCTION

Prevents starter from damage during engine operation



AUTO ENGINE OVERHEAT & WARM UP FUNCTION



BATTERY DISCONNECT SWITCH



ENGINE FAN GUARD



SLIP RESISTANT STICKS

> PARTS & SUPPORT

HYUNDAI GENUINE PARTS

Developed in synergy with our machines, Hyundai parts and lubricants ensure that you get the high levels of performance, reliability and safety that come with the complete Hyundai experience.

Enjoy the confidence and assurance of the most stringent testing procedures and the high quality manufacturing processes safeguarding your machine's health. Experience the versatility of our 200+ strong outlet network across India

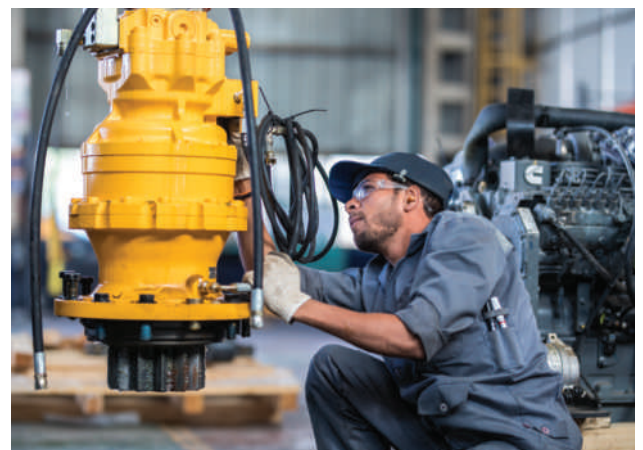
WHY RISK IT?

Maximize profits and extend your machine's life.

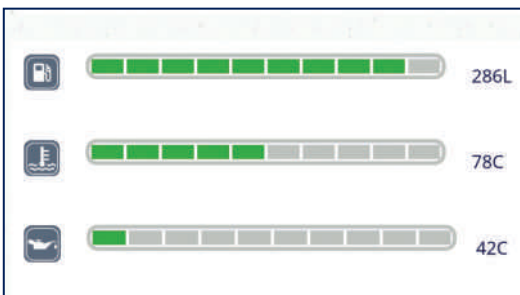
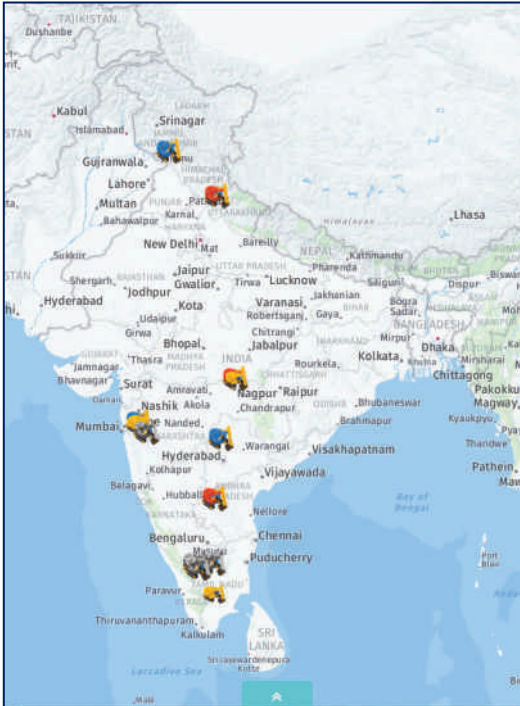


BENEFITS OF USING GENUINE HYUNDAI PARTS AND LUBRICANTS

- Genuine Hyundai Parts meet strict specifications and standards in Chemistry, Microstructure and Tensile Strength.
- Benefit from the continuous improvements and advancements made by Hyundai's technical team
- Improved performance of hydraulics and engine components
- Enjoy greater productivity with higher uptime
- Higher resale values
- Reduced oil consumption and unexpected breakdowns
- Enhanced component life



Our unique remote management system allows customers to access machine operating information & obtain service & maintenance alerts at the touch of a button



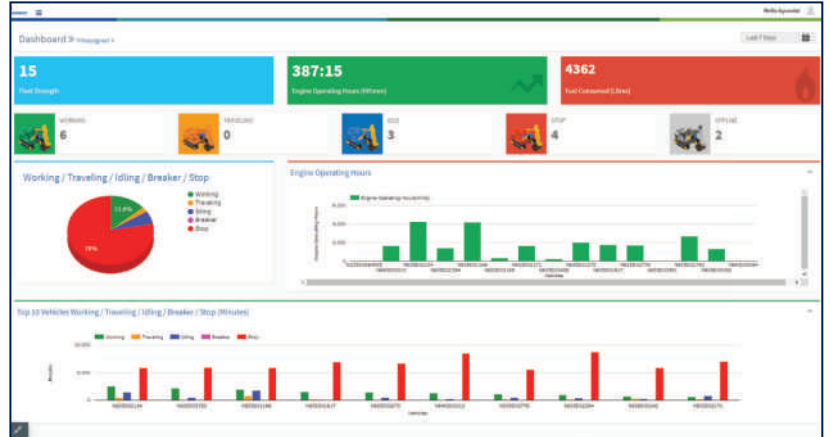
PROACTIVE MAINTENANCE

Access your machines service & maintenance history with the utmost convenience. Plan your service schedules intelligently with our regular reminders.

SELECT REPORTS	
Geo Zone In/Out Detail	<input checked="" type="radio"/>
Fault Code	<input type="radio"/>
Vehicle Usage Summary	<input type="radio"/>
Temperature Record	<input type="radio"/>

ALARMS

Get notified of system alarms & protect your machine from critical faults & experience repairs.

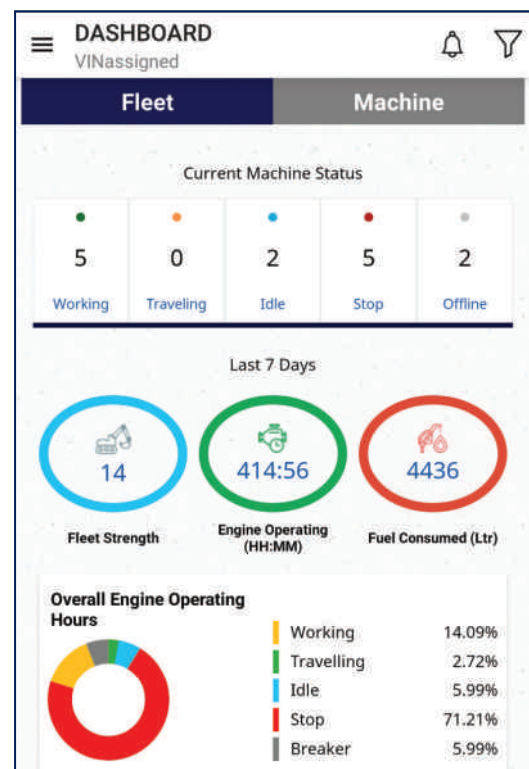


INCREASED PRODUCTIVITY

Remote management system empowers you to enhance the efficiency of your operations. Make better decision by comparing the machine's operating time with its travelling idling & breaker use duration.

CONVENIENT & EASY MONITORING

Enjoy round the clock and on the move access to your machine information through the website or mobile app.



SECURITY & FLEET MONITORING

Protect your machine from theft or unauthorized use. GPS features allows you to create a geo-fence & alerts you if the machine moves out of the defined boundary.

SPECIFICATIONS

Engine

Maker/Model		Kirloskar 4R1040T	
Rated flywheel horse power	SAE	J1995 (Gross)	94 HP (70.1 KW) @1,950 rpm
		J1349 (Net)	91 HP (67.9 KW) @1,950 rpm
Max Torque		36.5 kgf.m (264 lbf.FT) @1,550 rpm	

Hydraulic System

Main pump	
Type	Two variable displacement piston pumps
Max. flow	2 x 112 lpm
Sub-pump for pilot circuit	Gear pump
Cross-sensing & fuel saving pump system	

Hydraulic Motors

Travel	Two speed axial piston motor with counter balance valve and pairing brake
Swing	Axial piston motor with automatic brake

Relief Valve Settings

Implement circuits	330kgf/cm ²
Travel	330kgf/cm ²
Swing Circuit	240 kgf/cm ²
Pilot Circuit	35 kgf/cm ²
Service valve	Installed

Coolant & Lubricant Capacity

REFILLING	LITRE
Fuel tank	256
Engine coolant	20
Engine oil	11.5
Swing device	2.5
Final drive (each)	2.5
Hydraulic system / Hydraulic tank	180 / 100

Drives & Brakes

Drive method	Fully hydrostatic type
Drive motor	Axial piston motor in-shoe design
Reduction system	Planetary reduction gear
Max. drawbar pull	10400 kgf
Max. travel speed (high/low)	5.5 kmph /3.4 kmph
Gradeability	35 Degree (70%)
Parking brake	Multi wet disc

Undercarriage

X-Leg type centre frame is integrally welded with reinforced box section track frames. The undercarriage includes lubricated rollers, idlers, track adjusters with shock absorbing spring and sprockets, and track chain with triple grouse shoes.

Centre frame	X-leg type
Track frame	Pentagonal box type
No. of shoes on each side	41
No. of carrier rollers each side	1
No. of track rollers. each side	6
No. of rail guard on each side	1

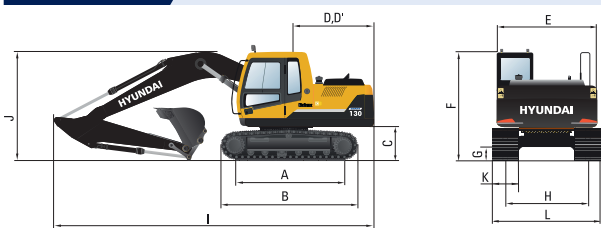
Swing System

Swing motor	Axial piston motor
Swing reduction	Planetary gear reduction
Swing bearing lubrication	Grease bathed
Swing brake	Multi wet disc
Swing speed	12 rpm

Operating Weight

Shoe Width mm (in)	Operating weight kg (lb)	Ground pressure kgf/cm ² (psi)
500 mm (20")	12,100 (26,676)	0.35 (4.98)

Dimensions

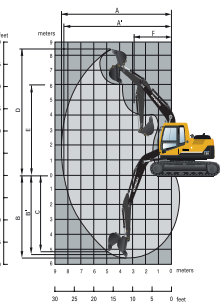


Dimensions

		(mm)
A	Tumbler distance	2610
B	Overall length of crawler	3340
C	Grand clearance of counterweight	900
D	Tail swing radius	2130
D'	Rear-end length	2110
E	Overall width of upperstructure	2475
F	Overall height of cab	2800
G	Min ground clearance	440
H	Track gauge	1990
I	Overall length of crawler	7240
J	Overall height of boom	2550
K	Track Shoe Width	500
L	Overall Width	2490

Working Ranges

	(mm)		
Boom length (std.)	4300		
Arm length (std.)	*1960	2260	
A	Maximum Digging Reach	7460	7740
A'	Digging Reach on Ground	7320	7610
B	Max Digging Depth	4770	5090
B'	Max- Digging Depth (8° level)	4510	4870
C	Vertical Wall Digging Depth	4070	4430
D	Maximum Digging Height	7900	8070
E	Maximum Dumping Height	5540	5710
F	Minimum Swing Radius	2340	2380



*Indicates standard configuration

LIFTING CAPACITIES

LIFTING CAPACITIES R130 SMART



Rating over-front



Rating over-side

- Boom: 4.3m (14'1") • Arm: 1.96m (6'5") • Bucket: 0.65m³ SAE Heaped
- 1600kg Counterweight

Load point height m (ft)		Load radius								At max. reach		
		1.5 m (5.0 ft)		3 m (10.0 ft)		4.5 m (15.0 ft)		6.0 m (20 ft)		Capacity		Reach m (ft)
6.0m (20ft)	kg lb					*1730 *3810	*1730 *3810			*1770 *3900	*1670 3680	5.62 (18.4)
4.5m (15.0ft)	kg lb					*1900 *4190	*1900 *4190			1570 3460	1140 2510	6.62 (21.7)
3.0m (10.0ft)	kg lb			*3110 *6860	*3110 *6860	*2360 *5200	2350 5180	*1830 *4030	1340 2950	1310 2890	930 2050	7.10 (23.3)
1.5m (5.0ft)	kg lb			*4890 *10780	4110 9060	2890 6370	2110 4650	1740 3840	1250 2760	1240 2730	870 1920	7.18 (23.6)
Ground Line	kg lb			5440 11990	3750 8270	2700 5950	1940 4280	1660 3660	1180 3660	1320 2910	920 2030	6.89 (22.6)
-1.5m (-5.0ft)	kg lb	*6140 *13540	*6140 *13540	5390 11880	3700 8160	2630 5800	1870 4120			1630 3590	1160 2560	6.15 (20.2)
-3.0m (-10.0ft)	kg lb	*9120 *20110	*9120 *20110	*5020 *11070	3830 8440	2710 5910	1940 4280					

1. Lifting capacity is based on SAE J1097, ISO 10567.
2. Lifting capacity of the Robex Series does not exceed 75% of the tipping load with the machine on firm, level ground or 87% of full hydraulic capacity.
3. The load point is a hook (standard equipment) located on the back of the bucket.
4. (*) indicates the load limited by hydraulic capacity.

- Boom: 4.3m (14'1") • Arm: 2.26m (7' 5") • Bucket :0.45m³ SAE Heaped
- 500mm Triple Grouser Shoe

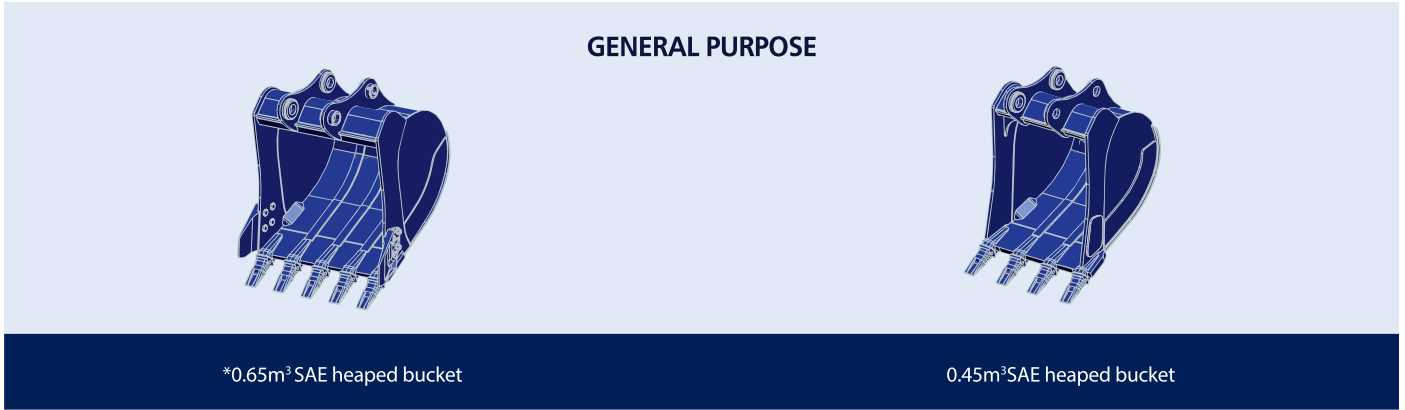
Load point height m (ft)		Load radius								At max. reach		
		1.5m (5.0ft)		3.0m (10.0ft)		4.5m (15.0ft)		6.0m (20.0ft)		Capacity		Reach m (ft)
6.0m (20ft)	kg lb					*1750 *3860	*1750 *3860			*1750 *3860	*1560 *3440	5.99 (19.7)
4.5m (15ft)	kg lb					*1790 *3950	*1790 *3950	*1530 *3370	1490 3280	1520 3350	1130 2490	6.92 (22.7)
3.0m (10ft)	kg lb			*2820 *6220	*2820 *6220	*2270 *5000	*2270 *5000	1940 4280	1450 3200	1300 2870	940 2070	7.38 (24.2)
1.5m (5ft)	kg lb			*4700 *10360	4370 9630	*2970 *6550	2250 4960	1840 4060	1360 3000	1240 2730	880 1940	7.46 (24.5)
Ground Line	kg lb			5660 12480	3950 8710	2830 6240	2060 4540	1760 3880	1280 2820	1300 2870	930 2050	7.18 (23.6)
-1.5m (-5ft)	kg lb	*5580 *12300	*5580 *12300	5550 12240	3850 8490	2740 6040	1980 4370	1720 3790	1240 2730	1560 3440	1130 2490	6.49 (21.3)
-3.0m (-10ft)	kg lb	*8530 *18810	*8530 *18810	*5440 *11990	3930 8660	2770 6110	2010 4430			*2270 *5000	1730 3810	5.17 (17.0)

1. Lifting capacity is based on SAE J1097, ISO 10567.
2. Lifting capacity of the Robex Series does not exceed 75% of the tipping load with the machine on firm, level ground or 87% of full hydraulic capacity.
3. The load point is a hook (standard equipment) located on the back of the bucket.
4. (*) indicates the load limited by hydraulic capacity.

SPECIFICATIONS

BUCKETS

All buckets are welded with high-strength steel.



Capacity m ³ (yd ³)		Width mm (in)		Weight. kg (lb)	Recommendation mm (ft -in)	
SAE heaped	CECE heaped	Without side cutters	With side cutters		4.3m (14' 1") Boom	
					1.9m (6' 5") Arm	2.2m (7' 5") Arm
* 0.65m ³ (0.85yd ³)	0.52m ³ (0.68yd ³)	1020mm (40.2")	1130mm (44.5")	531 kg (1171 lb)	■	▲
0.45m ³ (0.93yd ³)	0.40m ³ (0.52yd ³)	830mm (32.7")	940mm (37.0")	430 kg (940 lb)	●	●

* : Standard backhoe bucket

- Applicable for materials with density of 2,000 kg/m³ (3,370lb yd³) or less
- Applicable for materials with density of 1,600 kg/m³ (2,700 lb/yd³) or less
- ▲ Applicable for materials with density of 1,100 kg/m³ (1,850lb yd³) or less

ATTACHMENT

Boom and arm are of all-welded full-box section design. 4.3m (14' 4") mono boom and 1.96 m (6'5"), 2.26m (7' 5") Arm is available. Buckets are all-welded, high-strength steel implements.

Arm	Length	Weight	mm (ft.in)	*1,960 (6' 5")	2,260 (7' 5")
			kg (lb)	320 (710)	340 (750)
Bucket digging force	SAE	kN	78.5	78.5	78.5
		kgf	8,000	8,000	8,000
		lbf	17,640	17,640	17,640
	ISO	kN	90.2	90.2	90.2
		kgf	9,200	9,200	9,200
		lbf	20,280	20,280	20,280
Arm crowd force	SAE	kN	60.2	55.7	55.7
		kgf	6,140	5,680	5,680
		lbf	13,540	12,520	12,520
	ISO	kN	62.9	58.1	58.1
		kgf	6,410	5,920	5,920
		lbf	14,130	13,050	13,050

*: Standard Arm weight including cylinder and linkage

STANDARD / OPTIONAL LIST

Standard Equipment

ISO standard cabin

All-weather steel cab with all-around visibility
 Safety glass windows
 Sliding fold-in front window
 Sliding side window
 Lockable door
 Accessory box & Ashtray

Computer Aided Power Optimization (New CAPO) system

3-power mode, 2-work mode
 Auto deceleration & one touch deceleration system
 Auto engine overheat prevention system
 Self diagnostic system
 Centralized monitoring
 Fuel level gauge
 Engine coolant temperature gauge
 Hyd. oil temperature gauge

Warning

Fuel level
 CPU
 Engine oil pressure
 Engine coolant temperature
 Hyd. oil temperature
 Low battery
 Air cleaner clogging
 Tool kit
 Door and cab locks, one key
 One outside rearview mirror
 Fully adjustable suspension seat
 Slidable joystick. pilot-operated
 Two front working lights and two cabin work lights
 Electric horn
 Batteries (2 x 12V x 72 AH)
 Battery master switch
 Rear open window
 Removable clean out screen for oil cooler
 Automatic swing brake
 Removable reservoir tank
 24V Power socket

Fuel pre-filter
 Boom holding system
 Arm holding system
 Counter weight (1600kg)
 Standard bucket (0.65m³, 0.85yd³)
 Mono boom (4.3m, 14' 1")
 Arm (1.96m, 6' 5")
 Track shoes (500mm)
 Track rail guard
 Radio / USB player
 Operator kit
 Sun visor for cabin inside
 Remote management system (Hi-Track)

Optional Equipment

Beacon lamp
 Single acting piping kit
 Cabin front protector

Optional Arms (SAE heaped)

Arm (2.2 m)

Various optional Buckets (SAE heaped)

General purpose bucket (0.45 m³, 0.59 yd³)
 Air-conditioner
 Rock Breaker
 Clamshell Bucket
 Quick Coupler
 Orange Grapple



HD Hyundai Construction Equipment India Pvt. Ltd.

Factory Location

Plot No. A-2, M.I.D.C. Chakan, Phase II,
 Village: Khalumbre, Taluka: Khed, Dist: Pune-410501
 E mail: hyundai.care@theconnectionsindia.com
 Toll Free No.: 1800 209 8600

Please Contact

in.hd-hyundaice.com @hdhyundaiceindia /HDHyundaiCEIndia @HyundaiCEIndia
 /hyundai-construction-equipment-india-pvt-ltd/ @hyundaiconstructionequipme9481

Scan the QR code
 with your phone
 camera & visit
 our website



Oct 2023