

R150L **SMART PLUS**

OPERATING WEIGHT: 14200 kgs

GROSS POWER : 105 HP @ 2200 rpm

BUCKET CAPACITY: 0.65 - 0.72m³



R150L **SMART PLUS**

BEST-IN CLASS PERFORMANCE

- Advanced CAPO system
- Hydraulic flow summation
- Swing Priority
- Regeneration system
- Excellent digging forces



OPERATOR COMFORT

- Spacious cabin
- Multi Adjustable Premium Seat
- Enhanced visibility
- 7" Intelligent display



IMPROVED FUEL EFFICIENCY

- Electro hydraulic control system
- Auto deceleration system
- Breaker mode for enhanced efficiency
- Fuel saving kit

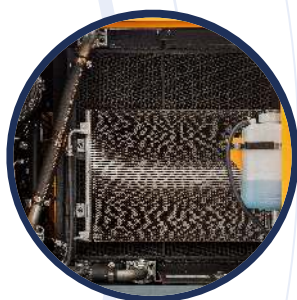


DESIGNED FOR SMART WORK



ENHANCED MACHINE DURABILITY

- Longest undercarriage in class
- Proven and durable structure
- HD reinforced front attachment
- 600mm Track chain
- New design side cowl support
- New design muffler hood support



SIMPLIFIED MAINTENANCE

- Easy serviceability
- Extended maintenance interval
- Low life cycle cost
- Bigger size radiator for higher cooling efficiency
- New design Side cowl for improved heat dissipation



PARTS & SUPPORT

- Hyundai genuine parts
- Max parts availability
- On-site product support
- Remote Management System (Hi-Track)

> PERFORMANCE

USER ADVANTAGES

Lower fuel and oil consumption as compared to other engines in this class.

Components like fuel pump, lube oil and lube oil filters on one side of the machine helps for easy maintenance.

Highly acceptable Kirloskar engine with easy parts availability.

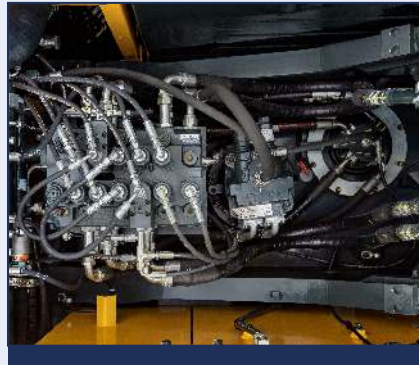
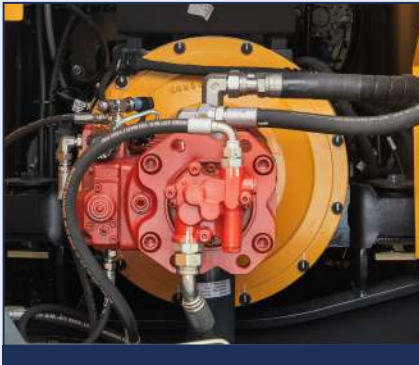


ENGINE

The four cylinder, turbocharged, water cooled diesel engine is built for heavy operation, maximum economy & reliability. The power units are produced to meet the high precision and quality standards.



R150L **SMART** *plus*



HYDRAULIC SYSTEM

Hydraulic pressure sensing system provides wide range of flow at various workloads. Open center Main Control Valve (MCV) ensures faster response and maximum efficiency. Travel & swing motor provides excellent mobility and faster cycle time.

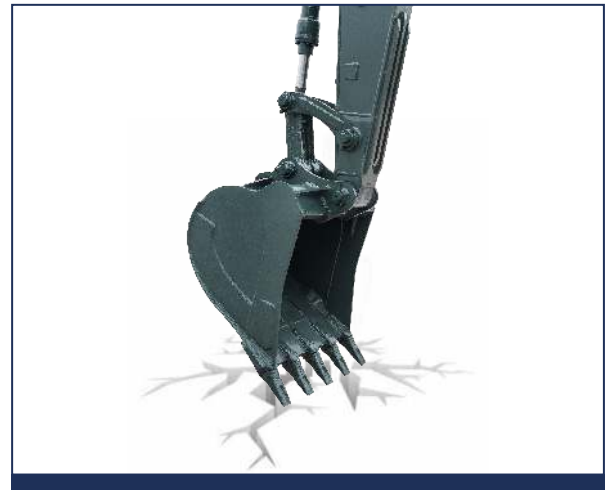
CHOICE OF OPERATING MODE

Working Mode	Advantage
P Mode	<ul style="list-style-type: none"> • Maximum Power • Fast Cycle time
S Mode	<ul style="list-style-type: none"> • Balance between power and fuel efficiency
Eco Mode	<ul style="list-style-type: none"> • Better fuel efficiency
Breaker Mode	<ul style="list-style-type: none"> • Sets pump flow to optimal level and boosts efficiency

EXCELLENT DIGGING FORCES

Higher output even in tough working condition

- Bucket - 11290 kgf
- Arm - 8580 kgf



POWER BOOST SYSTEM

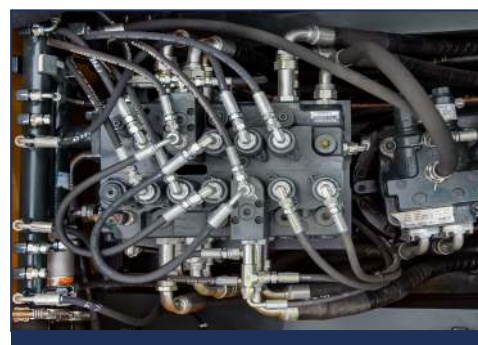
Increased digging forces by 10% than normal system pressure for short duration.

SWING PRIORITY

- Boost higher hydraulic flow to swing system
- Improved cycle time.

REDESIGNED MCV

- Redesigned wider oil galleries
- Quick response and better power output



FUEL EFFICIENCY



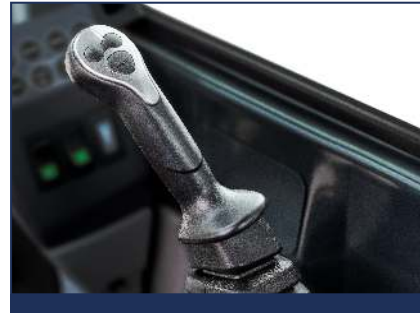
IMPROVED FUEL EFFICIENCY

New CMCU with auto deceleration function, Advanced CAPO system, Power & working mode options and Fuel saving kit results in excellent fuel efficiency.



EXCLUSIVE BREAKER MODE

Excellent fuel saving due to exclusive power for breaker operation



ONE TOUCH IDLE & AUTO DECELERATION

Prevents fuel losses by reducing engine rpm during no-load condition



PUMP FLOW CONTROL SYSTEM

Reduced pump flow during machine idle condition to minimize power loss.

ARM REGENERATION SYSTEM

- Smooth operation
- Prevent cavitation
- Increased performance & fuel efficiency



OPERATOR COMFORT

COMFORTABLE OPERATOR ENVIRONMENT

The ergonomically placed control levers and seat can be adjusted to provide maximum operator comfort.

The seat is fully adjustable for optimum operating position, reducing operator fatigue.

360 degree visibility for better and safe operations.



INSTRUMENT PANEL

The user-friendly multi language option cluster making it easy to check all critical systems like

- Hydraulic oil temperature,
- Coolant temperature
- Fuel level
- Self diagnostic checks
- Maintenance management

to optimizing productivity needs ensuring fuel efficiency

AIR CONDITIONING SYSTEM (OPTIONAL)



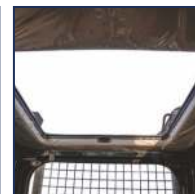
- High cooling performance
- Improved AC ducting
- Water bottle cooling system

Operator comfort results in increased productivity

OTHER FEATURES



MP3/USB PLAYER WITH REMOTE



SUNROOF WITH HINGED COVER



MULTI ADJUSTMENT SEAT



10 STAGE RPM DIAL



CABIN TOP LIGHT



SMOOTH TRAVEL PEDAL, MOBILE HOLDER, CHARGING SOCKET

> RELIABILITY

STRONG & STABLE LOWER FRAME

Use of specialized steel plates and reinforced design for higher strength and durability.



HD FRONT STRUCTURE

- Thicker plates
- Casted component
- Internal baffle plate
- Added wear plates on arm
- Bucket pin direction change for operator visibility



REINFORCED IDLER GUIDE AREA



RELIABLE COMPONENTS

Swing system and travel system exclusively designed by Hyundai ensuring reliable performance.



RUGGED UNDERCARRIAGE

- X frame provides excellent resistance to torsional bending to enhance structure life.
- Track shoe width upgraded to 600 for better manoeuvrability and stability.

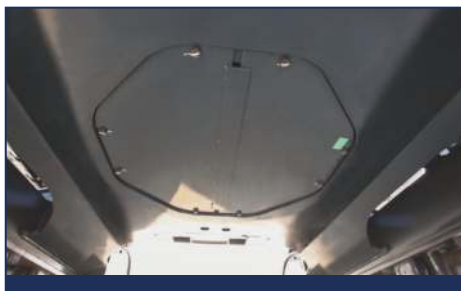


RELIABLE ELECTRICALS

- Dust and water proof connectors
- Longer component life



REINFORCED BUCKET



BELLY GUARD



TRACK LINKS

SERVICEABILITY

EASY ACCESSIBILITY

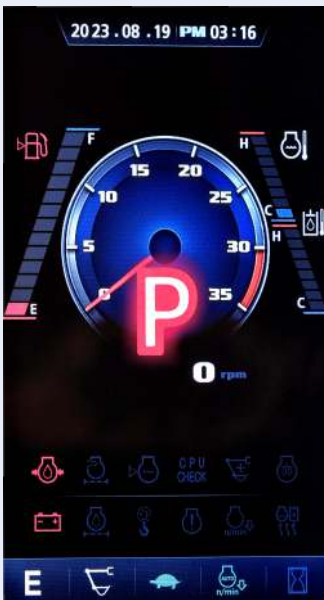
Easy access for maintenance means regular checks get done faster. Hyundai's SMART PLUS machines feature easy service access to increase uptime to reduce operating costs.

LEADING SERVICE INTERVAL

More efficient cooling system which extend service intervals, minimize operating cost and reduce machine down time.

CHANGE INTERVAL

Hydraulic oil	5000 hrs
Hydraulic filter	1000 hrs
Engine oil	500 hrs
Engine Filter	500 hrs



LARGE LCD MONITOR

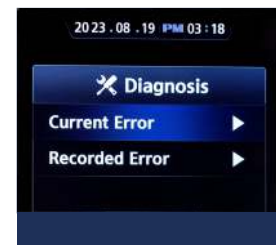
Operator can check the machine's vital signs without any difficulties

- **Self Diagnostic**
Reduces down time
- **Maintenance Management**
Proactive maintenance
- **Warning Indicator**
Ensures safe working

MAINTENANCE MANAGEMENT

Items	INTVL	Rest
Engine oil	500	496
Engine oil filter	500	496
Air Cleaner el...	500	496
Prefilter	500	496
Fuel filter ele...	500	496

SELF DIAGNOSTIC SYSTEM



EASY ENGINE MAINTENANCE

- Redesigned Radiator- Oil cooler assembly. Bigger size radiator for higher cooling efficiency
- Longer engine & hydraulic component life
- Servicing the engine and the hydraulics has been considerably simplified



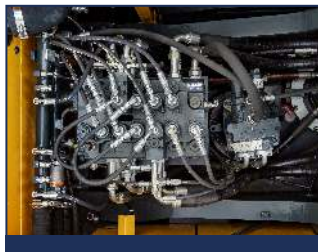
SAFETY - PEACE OF MIND AND OPERATOR CONFIDENCE

Cabin is integrally welded with high strength steel to provide enhanced protection. Handrails and steps are provided for easy operation. Anti-slip pads provide safety against skidding while climbing machine.



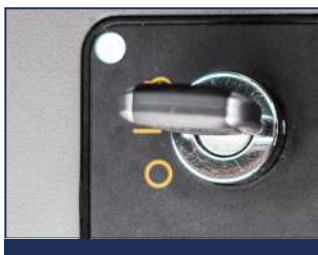
COUNTER BALANCE VALVE

Works as a hydrostatic brake and prevents machine against accidental roll down in steep gradients.



BOOM & ARM HOLDING SYSTEM

Prevent attachments from drifting against gravity due to prolonged overhanging.



ANTI RESTART FUNCTION

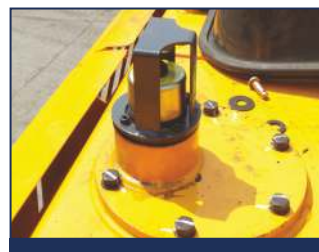
Prevents starter from damage during engine operation



AUTO ENGINE OVERHEAT PREVENTION



BATTERY DISCONNECT SWITCH



AIR BREATHER GUARD



UPPER UNDER COVER

> PARTS & SUPPORT

HYUNDAI GENUINE PARTS

Developed in synergy with our machines, Hyundai parts and lubricants ensure that you get the high levels of performance, reliability and safety that come with the complete Hyundai experience. Enjoy the confidence and assurance of the most stringent testing procedures and the high quality manufacturing processes safeguarding your machine's health. Experience the versatility of our 200+ strong outlet network across India.

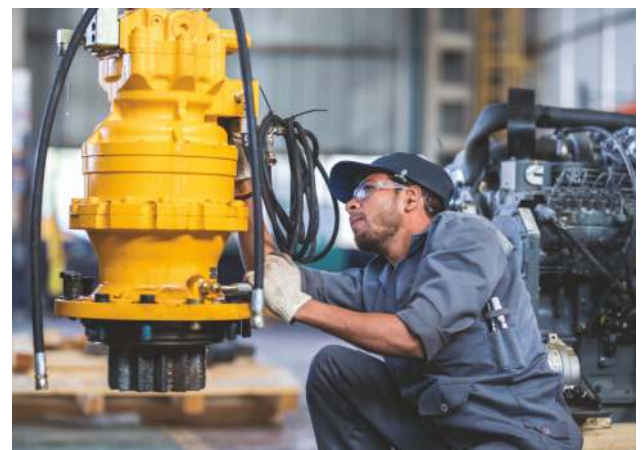
WHY RISK IT?

Maximize profits and extend your machine's life.



BENEFITS OF USING GENUINE HYUNDAI PARTS AND LUBRICANTS

- Genuine Hyundai Parts meet strict specifications and standards in Chemistry, Microstructure and Tensile Strength.
- Benefit from the continuous improvements and advancements made by Hyundai's technical team
- Improved performance of hydraulics and engine components
- Enjoy greater productivity with higher uptime
- Higher resale values
- Reduced oil consumption and unexpected breakdowns
- Enhanced component life



Our unique remote management system allows customers to access machine operating information & obtain service & maintenance alerts at the touch of a button

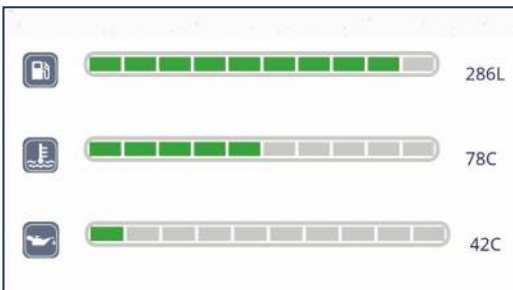


INCREASED PRODUCTIVITY

Remote management system empowers you to enhance the efficiency of your operations. Make better decision by comparing the machine's operating time with its travelling idling & breaker use duration.

CONVENIENT & EASY MONITORING

Enjoy round the clock and on the move access to your machine information through the website or mobile app.



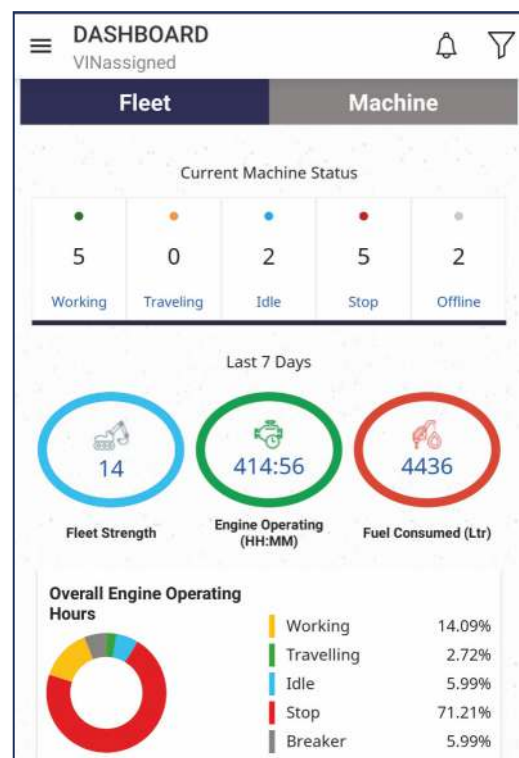
PROACTIVE MAINTENANCE

Access your machines service & maintenance history with the utmost convenience. Plan your service schedules intelligently with our regular reminders.

SELECT REPORTS	
Geo Zone In/Out Detail	<input checked="" type="radio"/>
Fault Code	<input type="radio"/>
Vehicle Usage Summary	<input type="radio"/>
Temperature Record	<input type="radio"/>

ALARMS

Get notified of system alarms & protect your machine from critical faults & experience repairs.



SECURITY & FLEET MONITORING

Protect your machine from theft or unauthorized use. GPS features allows you to create a geo-fence & alerts you if the machine moves out of the defined boundary.

SPECIFICATIONS

Engine

Maker/Model		Kirloskar4R1040T	
Rated flywheel horse power	ISO3046 (Gross)	105HP@ 2200rpm	
Max Torque		37.5@ 1500rpm	

Hydraulic System

Main pump	
Type	Two variable displacement piston pumps
Max. flow	2x130 lpm
Sub-pump for pilot circuit	Gear pump
Cross-sensing & fuel saving pump system	

Hydraulic Motors

Travel	Two speed axial piston motor with brake valve and parking brake
Swing	Axial piston motor with automatic brake

Relief Valve Settings

Implement Circuit	350kgf/cm ²
Travel	350kgf/cm ²
Power Boost	380kgf/cm ²
Swing Circuit	285kgf/cm ²
Pilot Circuit	40kgf/cm ²
Service valve	Installed

Coolant & Lubricant Capacity

REFILLING	LITER
Fuel tank	270
Engine coolant	22
Engine oil	11.5
Swing device	2.5
Final drive (each)	3
Hydraulic system / Hydraulic tank	210 / 124

Drives & Brakes

Drive method	Fully hydrostatic type
Drive motor	Axial piston motor in-shoe design
Reduction system	Planetary reduction gear
Traction Force	13300 kgf (130KN)
Max.travel speed (high/low)	5.5kmph/3.2kmph
Gradeability	35 Degree (70%)
Parking brake	Multi wet disc

Undercarriage

X-Leg type centre frame is integrally welded with reinforced box section track frames. The under carriage includes lubricated rollers, idlers, track adjusters with shock absorbing spring and sprockets and trackchain with triple grouse shoes.

Centre frame	X-leg type
Track frame	Pentagonal box type
No. of shoes on each side	46
No. of carrier rollers each side	1
No. of track rollers. each side	7
No. of rail guard each side	1

Swing System

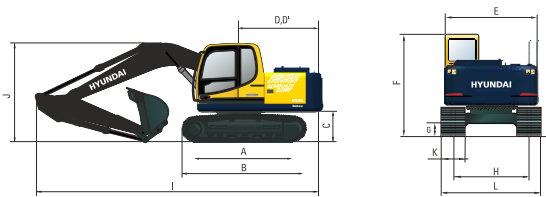
Swing motor	Axial piston motor
Swing reduction	Planetary gear reduction
Swing bearing lubrication	Grease bathed
Swing brake	Multi wet disc
Swing speed	12.0 rpm

Operating Weight

Shoe Width mm (in)	Operating weight kg (lb)	Ground pressure kgf/cm ² (psi)
600 mm (24")	14,200 (31,305)	0.36 (5.6)

Dimensions

(mm)



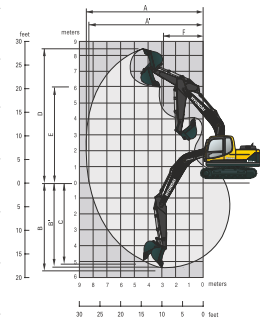
A	Tumbler distance	3000
B	Overall distance of crawler	3750
C	Ground clearance counter weight	940
D	Tail swing radius	2350
D'	Rear end length	2350
E	Overall width of upper structure	2475
F	Overall height of the cab .	2860
G	Min. ground clearance	440
H	Track Gauge	2000
I	Overall length	7870
J	Overall height of boom	2760
K	Track shoe width	600/500 (Optional)
L	Overall width	2600 (2500)

Working Ranges

(mm)

Arm length (std.)	*2100 2500	Boom length (std.)	4600
-------------------	------------	--------------------	------

A	Maximun Digging Reach	7920	8330
A'	Digging Reach on Ground	7770	8180
B	Max Digging Depth	5150	5550
B'	Max- Digging Depth (8' level)	4900	5340
C	Vertical Digging Depth	4900	5330
D	Maximum Digging Height	8100	8300
E	Maximum Dumping Height	5750	6060
F	Minimum Swing Radius	2670	2650
	Arm Crowd Force	7900 (8580)*	6700 (7270)*
	Bucket Digging Force	10400 (*11290) kgf	



*Power Boost

LIFTING CAPACITIES

LIFTING CAPACITIES R150L SMART PLUS



Rating over-front



Rating over-side

- Boom: 4.6m (15' 1") • Arm: 2.50m (8' 2")
- Shoe: 600mm triple grouser

Load point height m (ft)		Load radius								At max. reach		
		1.5 m (5.0 ft)		3 m (10.0 ft)		4.5 m (15.0 ft)		6.0 m (20 ft)		Capacity		Reach
												m (ft)
6.0m (20ft)	kg									*2810	1920	6.69
	lb									*6190	4230	(21.9)
4.5m (15.0ft)	kg							*2770	2270	2440	1500	7.53
	lb							*6110	5000	5380	3310	(24.7)
3.0m (10.0ft)	kg			*4930	*4930	*3830	3570	*3380	2190	2170	1310	7.95
	lb			*10870	*10870	*8440	7870	*7450	4830	4780	2890	(26.1)
1.5m (5.0ft)	kg			*8030	6240	*5010	3300	3380	2070	2100	1250	8.03
	lb			*17700	13760	*11050	7280	7450	4560	4630	2760	(26.3)
Ground Line	kg			*8780	5800	5200	3090	3270	1970	2180	1300	7.77
	lb			*19360	12790	11460	6810	7210	4340	4810	2870	(25.5)
-1.5m (-5.0ft)	kg	*5740	*5740	*9910	5700	5080	2990	3220	1920	2500	1500	7.15
	lb	*12650	*12650	*21850	12570	11200	6590	7100	4230	5510	3310	(23.5)
-3.0m (-10.0ft)	kg	*8760	*8760	*9040	5770	5100	3000			3340	2030	6.01
	lb	*19310	*19310	*19930	12720	11240	6610			7360	4480	(19.7)
4.5m (15.0ft)	kg			*6590	6030							
	lb			*14530	13290							

- Boom: 4.6m (15' 1") • Arm: 2.10m (6' 11") • Bucket: 0.65m³
- Shoe: 500mm (24") triple grouser with 1900kg (4190lb) Counterweight

Load point height m (ft)		Load radius								At max. reach		
		1.5 m (5.0 ft)		3 m (10.0 ft)		4.5 m (15.0 ft)		6.0 m (20 ft)		Capacity		Reach
												m (ft)
6.0m (20ft)	kg					*3090	*3090			*3030	2210	6.17
	lb					*6810	*6810			*6680	4870	(20.2)
4.5m (15.0ft)	kg					*3340	*3340	*2900	2240	2700	1680	7.09
	lb					*7360	*7360	*6390	4940	5950	3700	(23.3)
3.0m (10.0ft)	kg			*5810	*5810	*4230	3530	3490	2170	2380	1450	7.54
	lb			*12810	*12810	*9330	7780	7690	4780	5250	3200	(24.7)
1.5m (5.0ft)	kg			*8760	6090	*5340	3270	3370	2070	2290	1380	7.62
	lb			*19310	13430	*11770	7210	7430	4560	5050	3040	(25.0)
Ground Line	kg			*8470	5770	5180	3080	3280	1980	2400	1440	7.35
	lb			*18670	12720	11420	6790	7230	4730	5290	3170	(24.1)
-1.5m (-5.0ft)	kg	*6370	*6370	*9780	5740	5110	3010	3250	1950	2800	1700	6.68
	lb	*14040	*14040	*21560	12650	11270	6640	7170	4300	6170	3750	(21.9)
-3.0m (-10.0ft)	kg	*10300	*10300	*8590	5850	5160	3060			3700	2430	5.41
	lb	*22710	*22710	*18920	12900	11380	6750			8160	5360	(17.7)

1. Lifting capacity is based on SAE J1097, ISO 10567.

2. Lifting capacity of the Robex Series does not exceed 75% of the tipping load with the machine on firm, level ground or 87% of full hydraulic capacity.

3. The load point is a hook (standard equipment) located on the back of the bucket.

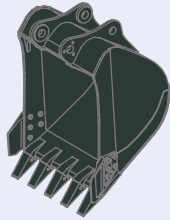
4. (*) indicates the load limited by hydraulic capacity.

SPECIFICATIONS

BUCKETS

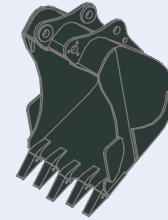
All buckets are welded with high-strength steel.

GENERAL PURPOSE



0.72m³SAE heaped bucket

HEAVY DUTY



*0.65m³SAE heaped bucket

Capacity m ³ (yd ³)		Width mm (in)		Weight. kg (lb)	Recommendation mm (ft -in)
SAE heaped	CECE heaped	Without side cutters	With side cutters		4.6m (15' 1") Boom
					2.1m (6' 11") Arm
*0.72m ³ (0.93yd ³)	0.60m ³ (0.78yd ³)	1205mm(47.4")	1305mm (51.4")	551 (1215)	■
●0.65m ³ (0.85yd ³)	0.55m ³ (0.72yd ³)	1110mm(43.7")	1210mm (47.6")	555 (1224)	▲

* : Standard GP bucket
 ● : Heavy Duty bucket

■ Applicable for materials with density of 1,600 kg/m³ (2,700lb yd³) or less
 ▲ Applicable for materials with density of 1,100 kg/m³ (1,850 lb/yd³) or less

ATTACHMENT

Boom and arm are welded with a low-stress, full-box section design. 4.6m (15' 1") mono boom and 2.1m (6' 11"), 2.5m (8'20") Arm is available. Buckets are all-welded, high-strength steel implements.

Arm	Length	mm (ft.in)	*2,100 (6' 11")	2,500 (8' 20")
Bucket digging force	SAE	kN	87.3 (94.8)	87.3 (94.8)
		kgf	8,900 (9,660)	8900 (9660)
		lbf	19,620 (21,300)	19,620 (21,300)
	ISO	kN	102 (110.8)	102 (110.8)
		kgf	10,400 (11,290)	10400 (11290)
		lbf	22,930 (24,890)	22930 (24890)
Arm crowd force	SAE	kN	73.6 (79.9)	62.8 (68.2)
		kgf	7,500 (8,140)	6400 (6950)
		lbf	16,530 (17,950)	14110 (15320)
	ISO	kN	77.5 (84.1)	65.7 (71.4)
		kgf	7,900 (8,580)	6700 (7270)
		lbf	17,420 (18,910)	14770 (16040)

*: Standard arm weight including cylinder and linkage

STANDARD / OPTIONAL LIST

Standard Equipment

ISO standard cabin

All-weather steel cab with all-around visibility
 Safety glass windows
 Sliding fold-in front window
 Sliding side window
 Lockable door
 Accessory box & Ashtray

Computer Aided Power Optimization (New CAPO) system

3-power mode, 2-work mode
 Auto deceleration & one touch deceleration system
 Auto overheat prevention system
 Self diagnostic system
 Centralized monitoring
 LCD display
 Engine Speed
 Clock and Error code
 Mobile Charging Point
 Fuel level indicator
 Engine coolant temperature indicator
 Hyd. oil temperature indicator

Warning

Fuel level
 Engine oil pressure
 Engine coolant temperature
 Hyd. oil temperature
 Low battery
 Air cleaner clogging
 Tool kit
 Door and cab locks, one key
 One outside rearview mirror
 Fully adjustable suspension seat
 Pilot-operated joystick
 Three front working lights and two cabin work lights
 Electric horn
 Batteries (2 x 12V x 72 AH)
 Battery master switch
 Removable clean out screen for oil cooler
 Automatic swing brake
 24V Power socket

Removable reservoir tank
 Fuel pre-filter
 Boom holding system
 Arm holding system
 Counter weight (1900kg)
 Mono boom (4.6m, 15' 1")
 Arm (2.1m, 6' 11")
 Track shoes (600mm)
 Track rail guard
 Operator kit
 FM radio
 Cabin lights
 General Purpose bucket (0.72 m³)
 Air-conditioner (5000kcal/hr, 20000 BTU/hr)
 Cabin Front Glass Protector
 Remote Management System (Hi-Track)

Optional Equipment

Single acting piping kit
 Travel alarm
 Beacon Lamp
 Seat Belt
 Heavy duty bucket (0.65m³)
 Track shoe (500mm)
 Arm (2.5m, 8' 20")
 Fan (for Non AC Cabin)
 Rock Breaker
 Clamshell Bucket
 Quick Coupler
 Orange Grapple
 LED Work Lamp



HD Hyundai Construction Equipment India Pvt. Ltd.

Factory Location

Plot No. A-2, M.I.D.C. Chakan, Phase II,
 Village: Khalumbre, Taluka: Khed, Dist: Pune-410501
 E mail: hyundai.care@theconnectionsindia.com
 Toll Free No.: 1800 209 8600

Please Contact

Scan the QR code
 with your phone
 camera & visit
 our website

