

STANDARD EQUIPMENT

- | | | | |
|--|--|--|--|
| <ul style="list-style-type: none"> · Canopy FOPS(ISO 10262 Level I) · Canopy TOPS(ISO 12117) | <ul style="list-style-type: none"> · Accessory box · Centralized monitoring · Gauges <ul style="list-style-type: none"> · Fuel level gauge · Engine coolant temperature gauge · Warning <ul style="list-style-type: none"> · Engine oil pressure · Engine coolant temperature · Preheat | <ul style="list-style-type: none"> · Low battery · Air cleaner closing · Fuel empty · Door and locks, one key · Radio / USB player · Mechanical suspension seat with seat belt · Console box tilting system(LH.) · Two front working lights · Electric horn | <ul style="list-style-type: none"> · Battery (1 x 12 V x 80 AH) · Battery master switch · Automatic swing brake · Removable reservoir tank · Water separator, fuel line · Mono boom (2.03 m, 6' 5") · Arm (1.12 m, 3'8") · Steel Crawler |
|--|--|--|--|

OPTIONAL EQUIPMENT

- | | | | |
|---|--|--|--|
| <ul style="list-style-type: none"> · Beacon lamp · Accumulator, work equipment lowering | <ul style="list-style-type: none"> · Travel alarm · Tool kit · Long Arm (1.35m, 4'5") | <ul style="list-style-type: none"> · Proportional control switch · RCV with Proportional Control Switch · Rotating Piping | <ul style="list-style-type: none"> · Boom & Arm Safety Lock Valve · Hyundai Bio Hydraulic Oil (HBHO) |
|---|--|--|--|

- * Standard and optional equipment may vary. Contact your Hyundai dealer for more information. The machine may vary according to International standards.
- * The photos may include attachments and optional equipment that are not available in your area.
- * Materials and specifications are subject to change without advance notice.
- * All imperial measurements rounded off to the nearest pound or inch.

PLEASE CONTACT



Hyundai Construction Equipment India Pvt. Ltd.
 Plot No. A-2, M. I. D. C. Chakan, Phase II,
 Village: Khalumbre, Taluka: Khed, Dist: Pune - 410501
 E mail: hyundai.care@theconnectionsindia.com
 Toll Free No.: 1800 209 8600

www.hyundaiindia.net @hceindia f /hyundaiindia.net
 t @hyceindia i Hyundai Construction Equipment India Pvt Ltd

www.hyundaiindia.net

May 2021

Robex

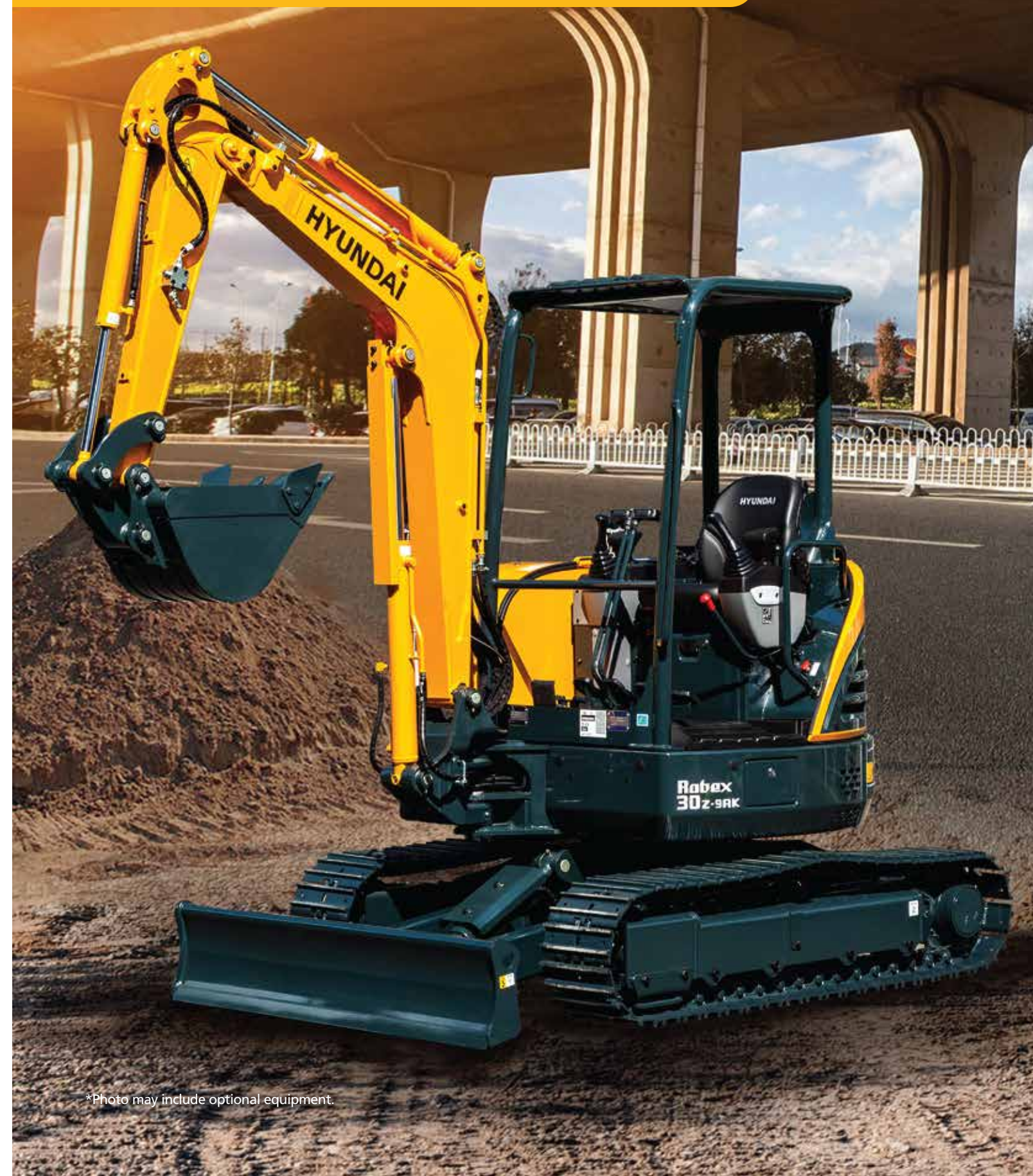
30z-9AK

With Tier 4 Final Engine installed

HYUNDAI
 CONSTRUCTION EQUIPMENT
 INDIA

MOVING YOU FURTHER

HYUNDAI CONSTRUCTION EQUIPMENT



*Photo may include optional equipment.

PRIDE AT WORK

Hyundai construction equipment strives to build state-of-the-art earthmoving equipment to give every operator maximum performance, more precision, versatile machine preferences, and proven quality.

Moving you further!



Robex 30Z-9AK

Machine Walk-Around

Engine Technology

Proven, reliable, fuel efficient, low emission and low noise Kubota Tier 4 final.

Rugged Upper and Lower Frame

The upper frame is designed to be heavy duty to absorb high stress load on the job. X-leg center frame and reinforced box section track frame provide exceptional strength and longer service life to withstand tough working conditions.

Efficient Control System

Control devices are all conveniently located for improved operator comfort and productivity. A safety lever on the left-side console is designed to prevent exiting the cabin while hydraulic controls are live.

Advanced Hydraulic System

The R30Z-9AK hydraulic system is precision designed for fast operation with fine control capabilities.

Comfortable Workspace

The canopy is roomy and ergonomically designed, with reduced sound levels and good visibility. Canopy frames meet international standards TOPS, FOPS ensuring operator's safety.

Operator Convenience

The R30Z-9AK features a suspension seat, pedals for added space and multiple storage compartments. The monitoring system includes seven warning indicators, water temperature gauge, fuel gauge and hour meter for productive, convenient operating.

Easy and Simple Maintenance

An adjustable suspension seat, wrist rests, ergonomically designed joysticks and plenty of leg room help to reduce operator fatigue. A array of indicators and gauges are displayed on the monitor which keep the operator aware of machine performance at all times.

Extended Life of Components

The R30Z-9AK reduces operating costs over time with long life hydraulic filters, hydraulic oil, shims and bushings.

PRECISION

Innovative hydraulic system technologies make the 9A series excavator fast, smooth and easy to control.



*Photo may include optional equipment.



Boom Swing

The R30Z-9AK's boom swing function is designed for efficient work in congested residential and urban areas. The boom can be offset left or right within an operating range.



Auto Shift Traveling System

During high-speed traveling, travel motor speed decreases automatically when subjected to heavy load, and resumes when the load reduces.



Dozer Blade

Large dozer blade provides added versatility, work efficiency and stability for the job.



Zero-tail Swing

R30Z-9AK's short tail swing radius allows the operator work in confined areas like close to buildings on roadways, and in urban areas. This compact radius design provides easy and efficient operation in any limited space work environment.

PERFORMANCE

9A series is designed for maximum performance to keep the operator working productively.



Cylinder Covers

Standard boom and dozer cylinder covers provide added protection.



Structure Strength

The R30Z-9AK cabin structure has been fitted with stronger but slimmer tubing for added safety and improved visibility. Low-stress, high strength steel is integrally welded to form a stronger, more durable upper and lower frame. Structural integrity was tested by way of FEM (Finite Elements Method) analysis and long-term durability tests.

Kubota D1305

Emissions: The most compact multi-cylinder liquid cooled industrial diesel engines comply with EPA Tier 4 Emission regulations without additional After Treatment Tools. This engine meets standards over the NRTC and NTE requirements.

Lower Noise Level: The half-float valve cover and MoS2 coated piston reduce noise levels and vibration.



*Photo may include optional equipment.

PREFERENCE

Operating a 9A series is unique to every operator. Operators can fully customize their work environment and operating preferences to fit their individual needs.



*Photo may include optional equipment.



Monitor

The monitoring system of the R30Z-9AK provides the operator with machine status information, including: engine oil pressure lamp, battery charge lamp, engine coolant temperature and a fuel gauge.

Comfortable Operating Cabin

In a 9A series cabin, you can easily adjust the seat and wrist rests settings to best suit your preferred operating condition.

1. All pedals are for additional floor space. Foot rest, attachment pedal, left and right travel pedals and boom swing pedal are arranged for convenient access.
2. Two cup holders are integrated into the right console for large and small drink storage.
3. An additional storage box with key lock is accessible under the operator's seat.
4. Adjustable wrist rests provide additional comfort.



Reduced Stress

An operator's work environment should be stress free. Hyundai's R30Z-9AK compact excavator is designed for comfort, reduced sound and plenty of space to reduce stress on the operator.

Operator Comfort

The left and right control levers are ergonomically located for convenient access. A safety lock system is designed to prevent exiting the cabin while hydraulic controls are live. When the safety lever and left side console are positioned upright, hydraulic functions are disengaged.



PROFITABILITY

9A series is designed to maximize profitability through improved efficiencies, enhanced service features and longer life components.



*Photo may include optional equipment



Easy Change Air Cleaner

The R30Z-9AK is equipped with a durable plastic air cleaner designed for easy maintenance.



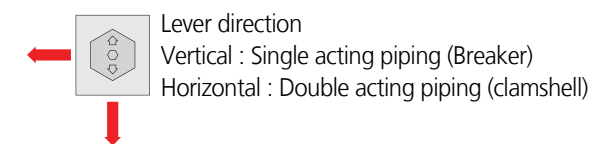
Centralized Grease Fittings

A centralized lubrication bank is available for faster, easier service and maintenance.



Selector Valve for Single or Double Acting Piping

Double Acting Pipe located on front of the Fuel Tank for easy to access and control.



Easy Access

The R30Z-9AK was built with accessibility in mind. All doors, covers and hoods were built for complete open access. Regular service and maintenance is easy and convenient with the R30Z-9AK.



Proportional Auxiliary Hydraulic System

- Opt: Proportional Control Switch for better speed control
- Enlarge the Operation Convenience



Long-Life Components

9A series excavators were designed with bushings designed for long-life lube intervals (250 hrs) & polymer shims (wear resistant, noise reducing), long-life hydraulic filters (1,000hrs), long-life hydraulic oil (5,000hrs), more efficient cooling systems and integrated preheating systems which extend service intervals, minimize operating costs and reduce machine down time.

Specifications

ENGINE

MODEL	Kubota D1305	
Type	4 Cycle. In line, water cooled diesel	
Rated flywheel horse power		
SAE	J1995 (gross)	24.9 HP (18.1 kW) at 2,350 rpm
	J1349 (net)	23.2 HP (17.3 kW) at 2,350 rpm
DIN	6271/1 (gross)	25.2 PS (18.5 kW) at 2,350 rpm
	6271/1 (net)	23.5 PS (17.3 kW) at 2,350 rpm
Max. torque	8.3 kgf-m(60.17 lbf-ft) at 1,600 rpm	
Bore X stroke	78 mm x 88 mm (3.07" x 3.46")	
Piston displacement	1,261 cc (76.9 in ³)	
Batteries	12V - 80 AH	
Starting motor	12V - 1.4 kW	
Alternator	12V - 40 A	

HYDRAULIC SYSTEM

MAIN PUMP	
Type	variable displacement piston pumps
Rated flow	2 x 27.6 + 19.6 L/min
Sub-pump for pilot circuit	Gear pump

Cross-sensing and fuel saving pump system

HYDRAULIC MOTORS

Travel	Two speed axial piston motor with counter balance valve and parking brake
Swing	Axial piston motor with automatic brake

RELIEF VALVE SETTING

Implement circuits	220 Kg/cm ² (3,130 psi)
Travel circuit	220 Kg/cm ² (3,130 psi)
Swing circuit	175 Kg/cm ² (2,489 psi)
Pilot circuit	30 Kg/cm ² (430 psi)
Service valve	Installed

HYDRAULIC CYLINDERS

No. of cylinder bore X stroke	Boom: 75 X 562 mm (3.0" x 22.2")
	Arm: 70 X 500 mm (2.8" x 19.7")
	Bucket: 60 x 420 mm (2.4" x 16.5")
	Boom swing: 75 X 400 mm (3.0" x 15.7")
	Dozer blade: 95 X 140 mm (3.7" x 5.5")

* Hyundai Bio Hydraulic Oil (HBHO) available

NOISE LEVEL (CAB)

NOISE LEVELS (DYNAMIC VALVE)	
LwA	94 dB
LpA	75 dB

COOLANT & LUBRICANT CAPACITY

(Refilling)	liter
Fuel tank	30
Engine coolant	5.0
Engine oil	5.9
Hydraulic tank	27

TRAVEL LEVERS

Traveling and steering : Two levers with pedals.

CONTROL LEVERS

TYPE	
Pilot control	Two joysticks with one safety lever (LH): Swing and arm, (RH): Boom and bucket with horn (ISO)
Engine throttle	Mechanical, cable type

SWING SYSTEM

Swing motor	Axial piston motor
Swing reduction	Planetary gear reduction
Swing bearing lubrication	Grease-bathed
Swing brake	Wet disc
Swing speed	9.1 rpm

DRIVES & BRAKES

Max. travel speed(high) / (low)	4.4 km / 2.4 km (2.8 mph) / (1.5 mph)
Maximum traction force	2.4 ton
Maximum gradeability	30 °
Parking brake	Wet disc

DIGGING FORCE (ISO)

Bucket	2,050 kgf
	20.1 kN
Arm [Long Arm]	1,400 [1,265] kgf
	13.7 [12.4] kN

WEIGHT(APPROXIMATE)

Operating weight including Canopy, 2,030mm (6' 8") boom, 1,120mm (3' 8") arm, SAE heaped 0.08 m³ (0.1yd³) excavator bucket, lubricant, coolant, full fuel tank, hydraulic tank and operator (75kg)

Shoe Width		Steel shoe 300 mm (10")
Operating Weight	Canopy	2,895 Kg (6,220 lb)
	Canopy	0.27 kg/cm ² (3.84 psi)

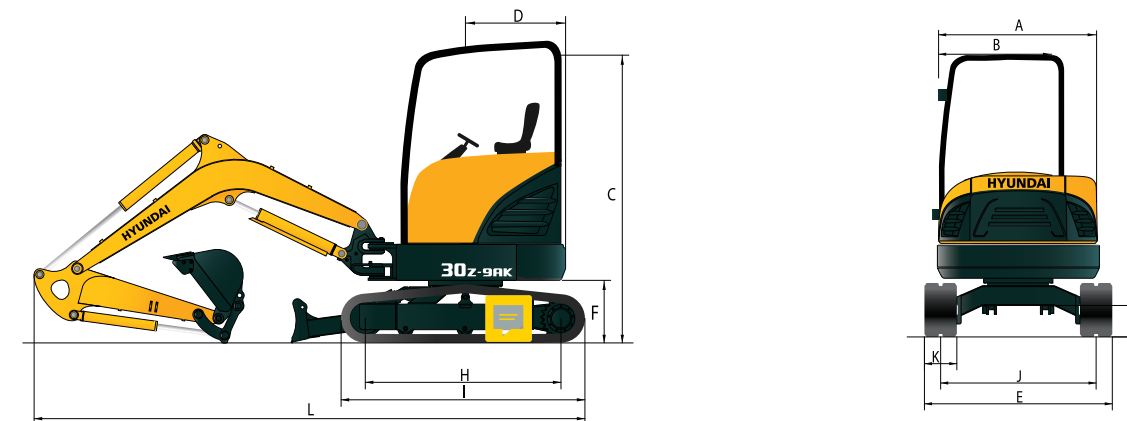
UNDERCARRIAGE

X-leg type center frame is integrally welded with reinforced box-section track frames. The undercarriage includes lubricated rollers, track adjusters with shock absorbing springs and sprockets, and steel shoes.

Center frame	X - leg type
Track frame	Pentagonal box type
No. of carrier roller on each side	1
No. of track roller on each side	4

Dimensions & Working Range

R30Z-9AK DIMENSIONS

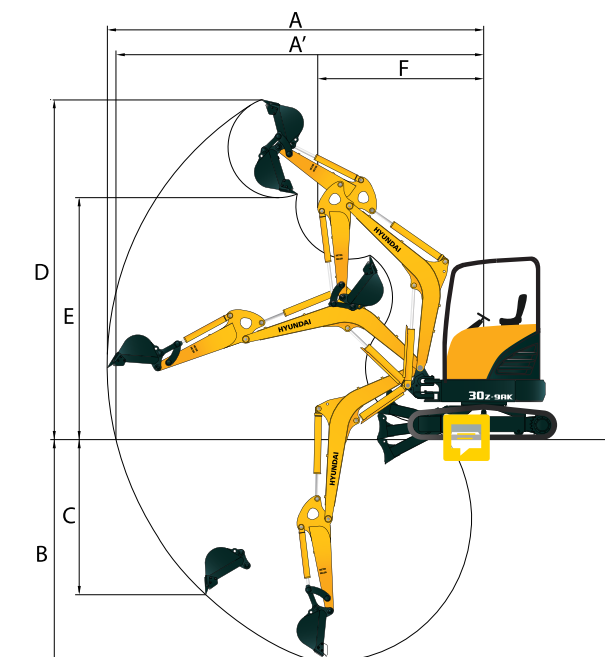


unit: mm (ft-in)

A Overall width of upper structure	1,485 (4' 10")	G Ground clearance	290 (11")
B Overall width of canopy	1,050 (3' 5")	H Tumbler distance	1,550 (4' 11")
C Overall height of canopy	2,500 (8' 2")	I Track length	1,970 (6' 6")
D Tail swing radius	775 (2' 7")	J Track gauge	1,250 (4' 1")
E Overall width	1,550 (5' 1")	K Track shoe width	300 (1' 0")
F Clearance under counterweight	510 (1' 67")	L Overall length	4,180 (13' 9")
		Long Arm	4,220 (13' 10")

R30Z-9AK WORKING RANGE

unit: mm (ft-in)



Boom length	2,030 (6' 8")
Arm length	1,120 (3' 8") *1,350 (4' 5")
A Max. digging reach	4,650 (15' 3") *4,860 (15' 11")
A' Max. digging reach at ground	4,515 (14' 10") *4,735 (15' 6")
B Max. digging depth	2,500 (8' 2") *2,720 (8' 11")
C Max. vertical wall digging depth	2,085 (6' 10") *2,310 (7' 7")
D Max. digging height	4,235 (13' 11") *4,375 (14' 4")
E Max. dumping height	2,860 (9' 5") *3,015 (9' 11")
F Min. swing radius	2,065 (6' 9") *2,110 (6' 11")

* Long Arm

Specifications

LIFTING CAPACITY R30Z-9AK

Rating over-front Rating over-side or 360 degree

Boom : 2.03 m (6' 5") / Arm : 1.12 m (3' 8") / Dozer Down : 300mm (9.8") Steel track Canopy Type. W/O ADD CWT

Load point height m (ft)		Life-point radius												At max. reach		
		1.0 m (3.3 ft)		1.5 m (4.9 ft)		2.0 m (6.6 ft)		2.5 m (8.2 ft)		3.0 m (9.8 ft)		3.5 m (11.5 ft)		Capacity		Reach
																m (ft)
3.5 m (11.5 ft)	kg lb													*700 *1540	690 1520	2.69 (8.8)
3.0 m (9.8 ft)	kg lb								*680 *1500	580 1280				*610 *1340	510 1120	3.23 (10.6)
2.5 m (8.2 ft)	kg lb							*690 *1520	580 1280	*710 *1570	450 990		*580 *1280	430 950	3.57 (11.7)	
2.0 m (6.6 ft)	kg lb						*840 *1850	760 1680	*770 *1700	570 1260	*730 *1610	450 990	*570 *1260	390 860	3.79 (12.4)	
1.5 m (4.9 ft)	kg lb						*1080 *2380	740 1630	*880 *1940	560 1230	*780 *1720	440 970	*580 *1280	370 820	3.91 (12.8)	
1.0 m (3.3 ft)	kg lb						*1310 *2890	710 1570	*1000 *2200	540 1190	*840 *1850	430 950	*610 *1340	360 790	3.95 (13.0)	
0.5 m (1.6 ft)	kg lb						*1460 *3220	690 1520	*1090 *2400	530 1170	*890 *1960	420 930	*660 *1460	360 790	3.90 (12.8)	
Ground Line	kg lb					*1600 *3530	960 2120	*1500 *3310	680 1500	*1130 *2490	520 1150	*900 *1980	420 930	*740 *1630	380 840	3.77 (12.4)
-0.5 m (-1.6 ft)	kg lb	*1300 *2870	*1300 *2870	*1490 *3280	*1490 *3280	*2010 *4430	970 2140	*1440 *3170	680 1500	*1100 *2430	520 1150	*840 *1850	420 930	*830 *1830	410 900	3.54 (11.6)
-1.0 m (-3.3 ft)	kg lb			*2230 *4920	1670 3680	*1740 *3840	980 2160	*1280 *2820	680 1500	*950 *2090	520 1150			*840 *1850	480 1060	3.17 (10.4)
-1.5 m (-4.9 ft)	kg lb			*1840 *4060	1690 3730	*1270 *2800	990 2180	*900 *1980	700 1540					*820 *1810	660 1460	2.60 (8.5)

Specifications

LIFTING CAPACITY R30Z-9AK

Rating over-front Rating over-side or 360 degree

Boom : 2.03 m (6' 5") / Arm : 1.12 m (3' 8") / Dozer Up : 300mm (9.8") Steel track Canopy Type. W/O ADD CWT

Load point height m (ft)		Life-point radius												At max. reach								
		1.0 m (3.3 ft)		1.5 m (4.9 ft)		2.0 m (6.6 ft)		2.5 m (8.2 ft)		3.0 m (9.8 ft)		3.5 m (11.5 ft)		Capacity		Reach						
																m (ft)						
3.5 m (11.5 ft)	kg lb															*700 *1540	670 1480	2.69 (8.8)				
3.0 m (9.8 ft)	kg lb													680 1500	560 1230			600 1320	500 1100	3.23 (10.6)		
2.5 m (8.2 ft)	kg lb													680 1500	5860 1230	440 970			500 1100	420 930	3.57 (11.7)	
2.0 m (6.6 ft)	kg lb													*840 *1850	740 1630	670 1480	550 1210	520 1150	430 950	3.79 (12.4)		
1.5 m (4.9 ft)	kg lb													880 1940	710 1570	650 1430	540 1190	510 1120	420 930	3.91 (12.4)		
1.0 m (3.3 ft)	kg lb													850 1870	680 1500	640 1410	520 1150	500 1100	420 930	3.95 (13.0)		
0.5 m (1.6 ft)	kg lb													830 1830	660 1460	620 1370	510 1120	500 1100	410 900	3.90 (12.8)		
Ground Line	kg lb													1190 2620	930 2050	820 1810	650 1430	620 1370	500 1100	490 1080	400 880	3.77 (12.4)
-0.5 m (-1.6 ft)	kg lb	*1300 *2870	*1300 *2870	*1490 *3280	*1490 *3280	*2010 *4430	970 2140	*1440 *3170	680 1500	*1100 *2430	520 1150	*840 *1850	420 930	*810 *1830	610 1340	500 1100	490 1080	400 880	480 1060	400 880	3.54 (11.6)	
-1.0 m (-3.3 ft)	kg lb			2220 4890	1590 3510	1200 2650	940 2070	820 1810	660 1460	620 1370	500 1100									570 1260	470 1040	3.17 (10.4)
-1.5 m (-4.9 ft)	kg lb			*1840 *4060	1620 3570	1220 2690	950 2090	830 1830	670 1480											790 1740	640 1410	2.60 (8.5)

LIFTING CAPACITY R30Z-9AK

Rating over-front Rating over-side or 360 degree

Boom : 2.03 m (6' 5") / Arm : 1.35 m (3' 8") / Bucket : 0.08 m³ SAE heaped / Dozer Up : 300mm (9.8") Steel track Canopy Type. 220 Counter weight

Load point height m (ft)		Life-point radius												At max. reach													
		1.0m (3.3ft)		1.5m (4.9ft)		2.0m (6.6ft)		2.5m (8.2ft)		3.0m (9.8ft)		3.5m (11.5ft)		4.0m (13.1ft)		Capacity		Reach									
																		m (ft)									
3.5 m (11.5 ft)	kg lb															*600 *1320	560 1230			*550 *1210	*550 *1210	3.04 (10.0)					
3.0 m (9.8 ft)	kg lb																			*490 *1080	440 970	3.51 (11.5)					
2.5 m (8.2 ft)	kg lb															*600 *1320	570 1260	530 1170	440 970			450 990	380 840	3.82 (12.5)			
2.0 m (6.6 ft)	kg lb																	670 1480	560 1230	520 1150	430 930	420 770	350 770	4.02 (13.2)			
1.5 m (4.9 ft)	kg lb																	*1270 *2800	1030 2270	880 1940	720 1590	660 1460	540 1190	430 900	340 750	4.13 (13.6)	
1.0 m (3.3 ft)	kg lb																			850 1870	690 1520	640 1410	520 1150	410 900	340 750	4.17 (13.7)	
0.5 m (1.6 ft)	kg lb																	1200 2650	930 2050	830 1830	660 1460	620 1370	510 1120	400 880	330 730	4.12 (13.5)	
Ground Line	kg lb																	*840 *1850	*840 *1850	1180 2600	920 2030	810 1790	650 1430	500 1100	400 880	330 730	4.00 (13.1)
-0.5 m (-1.6 ft)	kg lb	*1080 *2380	*1080 *2380	*1300 *2870	*1300 *2870	1180 2600	920 2030	800 1790	640 1410	490 1080	480 1060	400 880							430 950	360 790	3.78 (12.4)						
-1.0 m (-3.3 ft)	kg lb	*1510 *3330	*1510 *3330	*1860 *4100	1570 3460	1190 2620	920 2030	810 1790	650 1430	610 1340	490 1080							490 1080	410 900	3.46 (11.3)							
-1.5 m (-4.9 ft)	kg lb			2210 4870	1590 3510	1200 2650	930 2050	820 1810	660 1460											630 1390	510 1120	2.96 (9.7)					
-2.0 m (-6.6 ft)	kg lb																										

- Lifting capacity are based on ISO 10567.
- Lifting capacity of the Robex Series does not exceed 75% of the tipping load with the machine on firm, level ground or 87% of full hydraulic capacity.

- The Lift- point is a bucket pivot mounting pin on the arm (without bucket mass).
- (*) indicates the load limited by hydraulic capacity.

LIFTING CAPACITY R30Z-9AK

Rating over-front Rating over-side or 360 degree

Boom : 2.03 m (6' 5") / Arm : 1.35 m (3' 8") / Bucket : 0.08 m³ SAE heaped / Dozer Down : 300mm (9.8") Steel track Canopy Type. with CWT 220kg

Load point height m (ft)		Life-point radius												At max. reach																
		1.0m (3.3ft)		1.5m (4.9ft)		2.0m (6.6ft)		2.5m (8.2ft)		3.0m (9.8ft)		3.5m (11.5ft)		4.0m (13.1ft)		Capacity		Reach												
																		m (ft)												
3.5 m (11.5 ft)	kg lb															*600 *1320	580 1280			*550 *1210	*550 *1210	3.04 (10.0)								
3.0 m (9.8 ft)	kg lb																			*490 *1080	450 990	3.51 (11.5)								
2.5 m (8.2 ft)	kg lb																			*600 *1320	580 1280	*620 *1370	450 990			470 *1040	390 860	3.82 (12.5)		
2.0 m (6.6 ft)	kg lb																			*680 *1500	570 1260	*660 *1460	450 990	*500 *1100	360 790	4.02 (13.2)				
1.5 m (4.9 ft)	kg lb																	*1270 *2800	1070 2360	*950 *2090	740 1630	*800 *1760	560 1230	*720 *1590	440 970	*680 *1500	360 790	4.13 (13.6)		
1.0 m (3.3 ft)	kg lb																			*1200 *2650	710 1570	*940 *2070	540 1190	*800 *1760	430 950	*720 *1590	350 770	4.17 (13.7)		
0.5 m (1.6 ft)	kg lb																			*1340 *2950	970 2140	*1390 *3060	690 1520	*1050 *2310	530 1170	*860 *1900	420 930	*740 *1630	350 770	4.12 (13.5)
Ground Line	kg lb																			*840 *1850	*840 *1850	*1570 *3460	960 2120	*1480 *3260	670 1480	*1110 *2450	520 1150	*900 *1980	410 900	4.00 (13.1)
-0.5 m (-1.6 ft)	kg lb	*1080 *2380	*1080 *2380	*1300 *2870	*1300 *2870	*2070 4560	950 2090	*1470 *3240	670 1480	*1120 *2470	510 1120	*880 *1940	410 900							680 1500	370 820	3.78 (12.4)								
-1.0																														