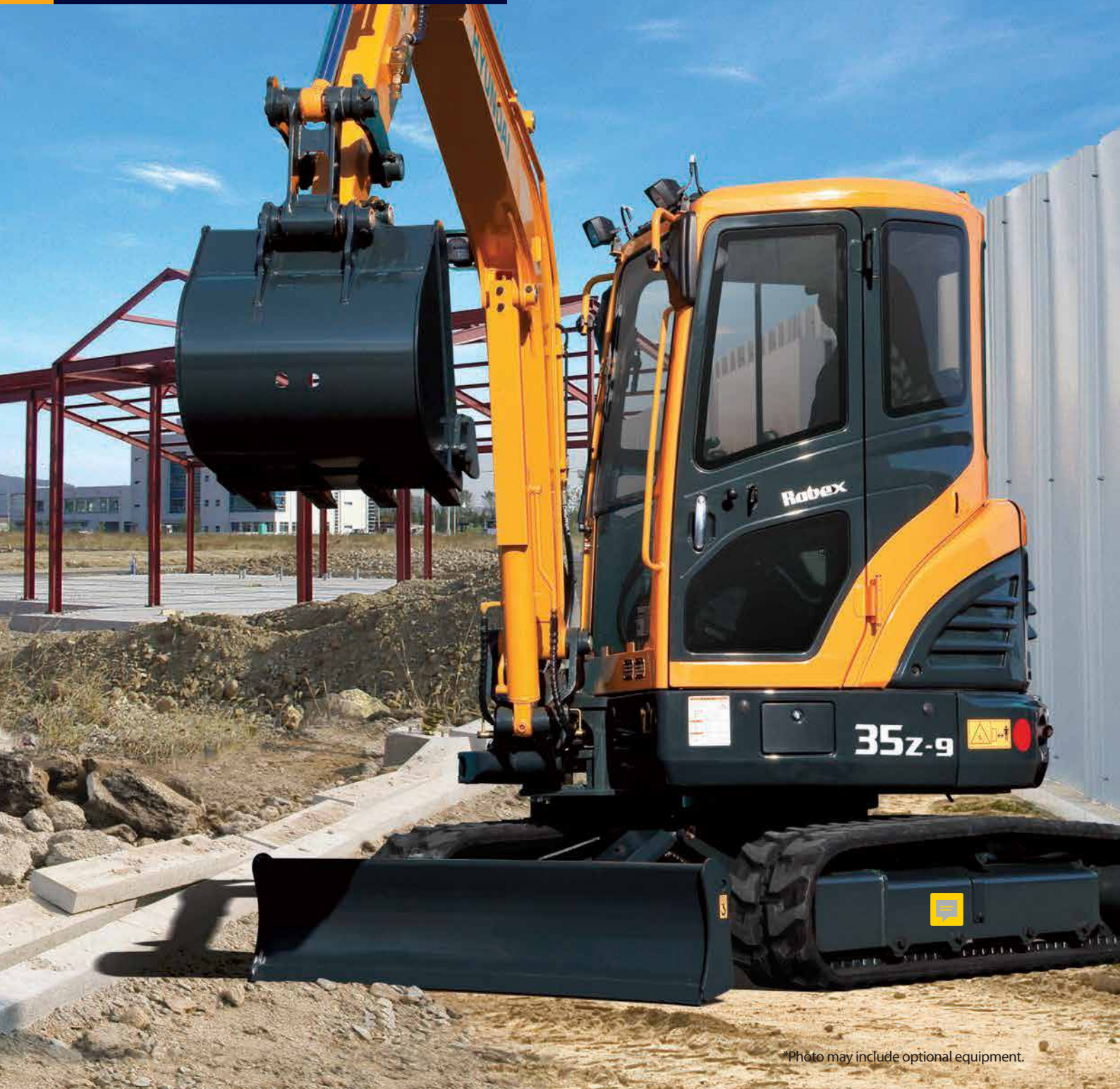


MOVING YOU FURTHER

Robex

35z-9

With Tier 3 Engine installed



*Photo may include optional equipment.

HYUNDAI
CONSTRUCTION EQUIPMENT
INDIA

Pride at Work

Hyundai construction equipment strives to build state-of-the-art earthmoving equipment to give every operator maximum performance, more precision, versatile machine preferences, and proven quality. Take pride in your work with Hyundai!



*Photo may include optional equipment.

Robex 35z-9

Machine Walk-Around

Rugged Upper and Lower Frame

The upper frame is designed to be heavy duty to absorb high stress load on the job. X-leg center frame and reinforced box section track frame provide exceptional strength and longer service life to withstand tough working conditions.

Engine Technology

The R35Z-9 is powered by a proven and reliable, Tier 3 certified YANMAR 3TNV88. This engine provides efficient fuel combustion and reduced noise.

Efficient Control System

Control devices are all conveniently located for improved operator comfort and productivity. A safety lever on the left-side console is designed to prevent exiting the cabin while hydraulic controls are live.

Advanced Hydraulic System

The R35Z-9 hydraulic system is precision designed for fast operation with fine control capabilities.

Comfortable and Durable Cabin

The cabin is roomy and ergonomically designed, with reduced sound levels and good visibility. Both canopy and cabin style frames meet international standards TOPS, FOPS ensuring operator's safety.

Operator Convenience

The R35Z-9 features a suspension seat, foldable pedals for added space and multiple storage compartments. The monitoring system includes seven warning indicators, water temperature gauge, fuel gauge and hour meter for productive, convenient operating.

Easy and Simple Maintenance

An adjustable suspension seat, wrist rests, ergonomically designed joysticks and plenty of leg room help to reduce operator fatigue. A array of indicators and gauges are displayed on the monitor which keep the operator aware of machine performance at all times. The monitoring system includes seven warning indicators, water temperature gauge, fuel gauge and hour meter.

Extended Life of Components

The R35Z-9 reduces operating costs over time with long life hydraulic filters, hydraulic oil, shims and bushings.

Preference

The R35Z-9 offers an operator an optimal work environment with a cabin designed for comfort and sophistication. Operating R35Z-9 is unique to every operator. Operators can fully customize their work environment and operating preferences to fit their individual needs.



*Photo may include optional equipment.



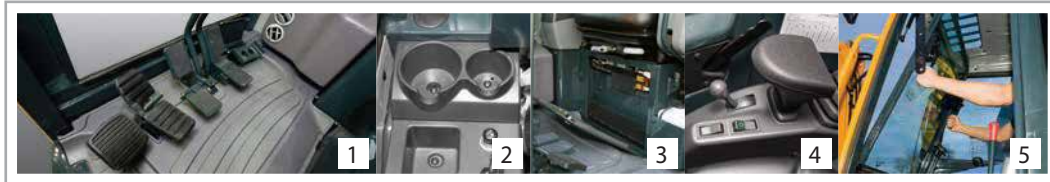
Monitor

The newly designed cabin was conceived for more space, a wider field of view and operator comfort. Special attention was given to a clear, open and convenient interior with plenty of visibility on the machine surroundings and the job at hand. This well balanced combination of precision aspects put the operator in the perfect position to work safely and securely.

Comfortable Operating Cabin

In a 9 series cabin, you can easily adjust the seat and wrist rests settings to best suit your preferred operating condition.

1. All pedals are foldable for additional floor space. Foot rest, attachment pedal, left and right travel pedals and boom swing pedal are arranged for convenient access.
2. Two cup holders are integrated into the right console for large and small drink storage.
3. An additional storage box with key lock is accessible under the operator's seat.
4. Adjustable wrist rests provide additional comfort.
5. A sliding fold-in front window is easily opened and safely stored in an open position to improve ventilation and visibility.(Cabin type only)



Reduced Stress

An operator's work environment should be stress free. Hyundai's R35Z-9 compact excavator is designed for comfort, reduced sound and plenty of space to reduce stress on the operator.

Operator Comfort

The left and right control levers are ergonomically located for convenient access. A safety lock system is designed to prevent exiting the cabin while hydraulic controls are live. When the safety lever and left side console are positioned upright, hydraulic functions are disengaged.



A tiltable left-side console make the operator easier to enter and exit the cab.



Precision & Performance

New technologies designed to improve performance and precision, make the R35Z-9 smooth, fast and easy to control.



*Photo may include optional equipment.



Boom Swing

The R35Z-9's boom swing function is designed for efficient work in congested residential and urban areas. The boom can be offset left or right within an operating range.

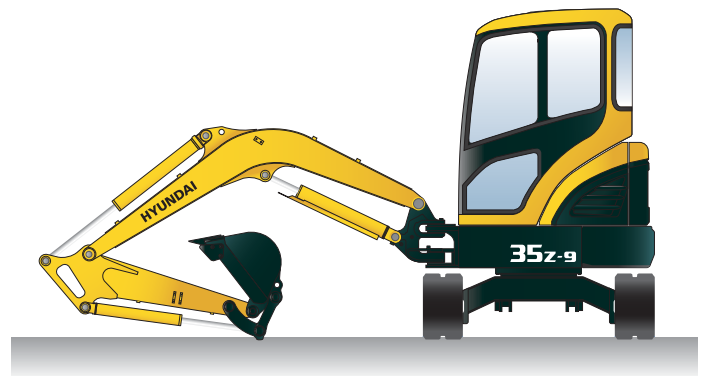
Improved Hydraulic System

Optimized matching between the joystick and main control valve improves fine control and smoothness of operation. An arm flow summation system provides energy savings, reduced cavitation and increased speed. To improve safety and avoid boom drift the R35Z-9 is equipped with an integrated boom holding system.



Structure Strength

The R35Z-9 cabin structure has been fitted with stronger but slimmer tubing for added safety and improved visibility. Low-stress, high strength steel is integrally welded to form a stronger, more durable upper and lower frame. Structural integrity was tested by way of FEM (Finite Elements Method) analysis and long-term durability tests.



Zero-tail Swing

R35Z-9's short tail swing radius allows the operator work in confined areas like close to buildings on roadways, and in urban areas. This compact radius design provides easy and efficient operation in any limited space work environment.

Yanmar 3TNV88

Tier 3 certified, Yanmar 3TNV88 engine provides maximum power, reliability, optimum fuel economy, and reduced emissions.

Profitability

R35Z-9 is designed to maximize profitability through improved efficiencies, enhanced service features and longer life components.

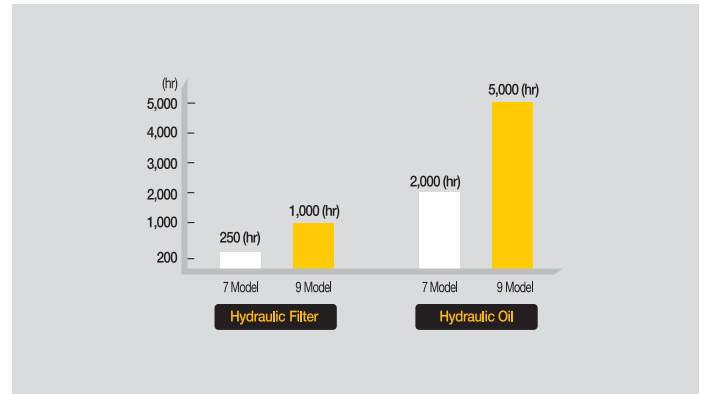


*Photo may include optional equipment.



Easy Access

The R35Z-9 was built with accessibility in mind. All doors, covers and hoods were built for complete open access. Regular service and maintenance is easy and convenient with the R35Z-9.



Extended the Life of Components

9 series excavators were designed with bushings designed for extended lube intervals (250 hrs) & polymer shims (wear resistant, noise reducing), extended-life hydraulic filters (1,000hrs), long-life hydraulic oil (5,000hrs), more efficient cooling systems and integrated preheating systems which extend service intervals, minimize operating costs and reduce machine down time.



Easy Change Air Cleaner

The R35Z-9 is equipped with a durable plastic air cleaner designed for easy maintenance.

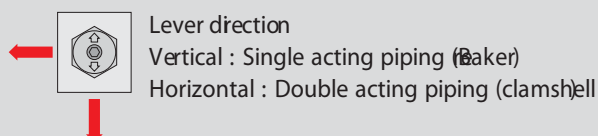


Centralized Grease Fittings

A centralized lubrication bank is available for faster, easier service and maintenance.



Selector Valve for Single or Double Acting Piping



Specifications

ENGINE

MODEL	Yanmar 3TNV88	
Type	Water cooled, 4 cycle Diesel, 3-cylinders in line, direct injection, low noise	
Rated flywheel horse power		
SAE	J1995 (gross)	27.3 HP (20.4kW) at 2,200rpm
	J1349 (net)	26.5 HP (19.8kW) at 2,200rpm
DIN	6271/1 (gross)	27.6 PS (20.3kW) at 2,200rpm
	6271/1 (net)	26.9 PS (19.8kW) at 2,200rpm
Max. torque	10.9 kgf ·m(79 lbf ·ft) at 1,100 rpm	
Bore X stroke	88mm x 90mm (3.5" x 3.5")	
Piston displacement	1,642 cc (100 in ³)	
Batteries	12V - 80 AH	
Starting motor	12V - 2.3kW	
Alternator	12V - 55 A	

HYDRAULIC SYSTEM

MAIN PUMP	
Type	Variable displacement piston pumps
Rated flow	2 x 38.5 + 23.5 + 11.2 L/min
Sub-pump for pilot circuit	Gear pump
HYDRAULIC MOTORS	
Travel	Two speed axial piston motor with counter balance valve and parking brake
Swing	Axial piston motor with automatic brake
RELIEF VALVE SETTING	
Implement circuits	230 kgf/cm ² (3,270 psi)
Travel circuit	230 kgf/cm ² (3,270 psi)
Swing circuit	200 kgf/cm ² (2,840 psi)
Pilot circuit	30 kgf/cm ² (430 psi)
Service valve	Installed

HYDRAULIC CYLINDER

NO. OF CYLINDER - BORE X STROKE	
Boom	2-120 x 1,290 mm (4.7" x 50.8")
Arm	1-140 x 1,510 mm (5.5" x 59.4")
Bucket	1-bore 120 x 1,055 mm (4.7" x 41.5")
Blade	2-125 x 222 mm (4.9" x 8.7")
Outrigger	2-130 x 427 mm (5.1" x 16.8")

NOISE LEVEL(CAB)

NOISE LEVELS (DYNAMIC VALUE)	
LwA	94dB
LpA	75dB

COOLANT & LUBRICANT CAPACITY

Refilling	liter
Fuel tank	42
Engine coolant	5
Engine oil	6.7
Hydraulic tank	46

TRAVEL LEVERS

Traveling and steering : Two levers with pedals.

CONTROL LEVERS

Type	
Pilot control	Two joysticks with one safety lever (LH): Swing and arm, (RH): Boom and bucket (ISO)
Engine throttle	Mechanical, cable type

SWING SYSTEM

Swing motor	Axial piston motor
Swing reduction	Planetary gear reduction
Swing bearing lubrication	Grease-bathed
Swing brake(option)	Wet disc
Swing speed	9.5 rpm

DRIVES & BRAKES

Max. travel speed(high) / (low)	4.5km / 2.5km (2.8mph) / (1.6mph)
Maximum traction force	3.1ton
Maximum gradeability	30°
Parking brake	Wet disc

DIGGING FORCE(ISO)

	1.3m Arm	1.6m Arm
Bucket	3,200 kgf	3,200 kgf
	31.4 kN	31.4 kN
	7,050 lbf	7,050 lbf
Arm	1,990 kgf	1720 kgf
	19.5 kN	16.9 kN
	4,390 lbf	3,790 lbf

WEIGHT (APPROXIMATE)

Operating weight, including 2,500 mm (8' 2") boom, 1,300 mm (4' 3") arm, SAE heaped 0.11 m³ (0.14yd³) excavator bucket, lubricant, coolant, full fuel tank, hydraulic tank and the standard equipment.

Shoe Width	Steel 300mm (12")	
Operating Weight	Cabin	3,750 kg (8,270lb)
	Canopy	3,600 kg (7,940lb)
Ground Pressure	Cabin	0.34 kg/cm ² (4.9psi)
	Canopy	0.33 kg/cm ² (4.7psi)

UNDERCARRIAGE

X-leg type center frame is integrally welded with reinforced box-section track frames. The undercarriage includes lubricated rollers, track adjusters with shock absorbing springs and sprockets, and steel shoes.

Center frame	X-leg type
Track frame	Pentagonal box type
No. of carrier roller on each side	1
No. of track roller on each side	4

AIR CONDITIONING SYSTEM

The air condition system for the machine contains the fluorinated greenhouse gas with global warming potential of R134a. (Global Warming Potential : 1430)
The system hold 0.6kg refrigerant consisting of a CO₂ equivalent 0.86kg metric tonne.
For more information, Please refer to the manual.

LIFTING CAPACITIES R35Z-9



Rating over-front



Rating over-side or 360 degree

Boom : 2.50 m (8' 2") / Arm : 1.30 m (4' 3") / Bucket : 0.11 m³ (0.14 yd³) SAE heaped Dozer blade up 300mm(12") steel track

Load point height m (ft)		Load radius						At max. reach		
		2.0 m (6.6 ft)		3.0 m (9.8 ft)		4.0 m (13.1 ft)		Capacity		Reach
										m (ft)
4.0 m	kg							*540	*540	3.18
(13.1 ft)	lb							*1190	*1190	(10.4)
3.0 m	kg					*520	500	*530	480	4.08
(9.8 ft)	lb					*1150	1100	*1170	1060	(13.4)
2.0 m	kg			*680	*680	*560	490	*540	390	4.51
(6.6 ft)	lb			*1500	*1500	*1230	1080	*1190	860	(14.8)
1.0 m	kg			*960	730	*660	460	*570	360	4.64
(3.3 ft)	lb			*2120	1610	*1460	1010	*1260	790	(15.2)
0.0 m	kg	*1520	1350	*1110	690	*720	450	*600	370	4.50
(0.0 ft)	lb	*3350	2980	*2450	1520	*1590	990	*1320	820	(14.8)
-1.0 m	kg	*1890	1370	*1060	690	*660	450	*640	440	4.04
(-3.3 ft)	lb	*4170	3020	*2340	1520	*1460	990	*1410	970	(13.3)
-2.0 m	kg	*1280	*1280	*720	*720			*670	*670	3.09
(-6.6 ft)	lb	*2820	*2820	*1590	*1590			*1480	*1480	(10.2)

1. Lifting capacity are based on ISO 10567.

2. Lifting capacity of the Robex Series does not exceed 75% of tipping load with the machine on firm, level ground or 87% of full hydraulic capacity.

3. The Lift-point is bucket pivot mounting pin on the arm (without bucket mass).

4. (*) indicates load limited by hydraulic capacity.

Boom : 2.50 m (8' 2") / Arm : 1.30 m (4' 3") / Bucket : 0.11 m³ (0.14 yd³) SAE heaped Dozer blade up 300mm(12") steel track

Load point height m (ft)		Load radius						At max. reach		
		2.0 m (6.6 ft)		3.0 m (9.8 ft)		4.0 m (13.1 ft)		Capacity		Reach
										m (ft)
4.0 m	kg							*670	*670	3.12
(13.1 ft)	lb							*1480	*1480	(10.2)
3.0 m	kg					590	510	580	500	4.04
(9.8 ft)	lb					1300	1120	1280	1100	(13.3)
2.0 m	kg			*790	780	580	500	480	420	4.48
(6.6 ft)	lb			*1740	1720	1280	1100	1060	930	(14.7)
1.0 m	kg			850	730	560	480	450	390	4.61
(3.3 ft)	lb			1870	1610	1230	1060	990	860	(15.1)
0.0 m	kg	*1260	*1260	820	700	540	470	470	400	4.46
(0.0 ft)	lb	*2780	*2780	1810	1540	1190	1040	1040	880	(14.6)
-1.0 m	kg	1610	1320	820	700			540	470	4.00
(-3.3 ft)	lb	3550	2910	1810	1540			1190	1040	(13.1)
-2.0 m	kg	*1220	*1220	*680	*680			*660	*660	3.03
(-6.6 ft)	lb	*2690	*2690	*1500	*1500			*1460	*1460	(9.9)

1. Lifting capacity are based on ISO 10567.

2. Lifting capacity of the Robex Series does not exceed 75% of tipping load with the machine on firm, level ground or 87% of full hydraulic capacity.

3. The Lift-point is bucket pivot mounting pin on the arm (without bucket mass).

4. (*) indicates load limited by hydraulic capacity.

Specifications

LIFTING CAPACITIES R35Z-9



Rating over-front



Rating over-side or 360 degree

Boom : 2.50 m (8' 2") / Arm : 1.60 m (5' 3") / Bucket : 0.11 m³ (0.14 yd³) SAE heaped / Dozer blade up : 300mm(12") steel track

Load point height m (ft)		Load radius								At max. reach		
		1.0 m (3.3 ft)		2.0 m (6.6 ft)		3.0 m (9.8 ft)		4.0 m (13.1 ft)		Capacity		Reach
												m (ft)
4.0 m	kg									*580	*580	3.57
(13.1 ft)	lb									*1280	*1280	(11.7)
3.0 m	kg						*540	*540	*550	480		4.37
(9.8 ft)	lb						*1190	*1190	*1210	1060		(14.4)
2.0 m	kg					*680	*680	*590	550	*530	410	4.77
(6.6 ft)	lb					*1500	*1500	*1300	1210	*1170	900	(15.7)
1.0 m	kg					*980	800	*700	520	*550	380	4.89
(3.3 ft)	lb					*2160	1760	*1540	1150	*1210	840	(16.1)
0.0 m	kg			*1320	*1320	*1170	760	*780	500	*620	390	4.76
(0.0 ft)	lb			*2910	*2910	*2580	1680	*1720	1100	*1370	860	(15.6)
-1.0 m	kg	*1570	*1570	*2070	1430	*1150	750	*750	500	*640	450	4.34
(-3.3 ft)	lb	*3460	*3460	*4560	3150	*2540	1650	*1650	1100	*1410	990	(14.2)
-2.0 m	kg	*2520	*2520	*1520	1460	*880	770			*640	620	3.50
(-6.6 ft)	lb	*5560	*5560	*3350	3220	*1940	1700			*1410	1370	(11.5)

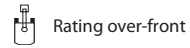
1. Lifting capacity are based on ISO 10567.

2. Lifting capacity of the Robex Series does not exceed 75% of tipping load with the machine on firm, level ground or 87% of full hydraulic capacity.

3. The Lift-point is bucket pivot mounting pin on the arm (without bucket mass).

4. (*) indicates load limited by hydraulic capacity.

LIFTING CAPACITIES R35Z-9



Rating over-front



Rating over-side or 360 degree

Boom : 2.50 m (8' 2") / Arm : 1.60 m (5' 3") / Bucket : 0.11 m³ (0.14 yd³) SAE heaped Dozer blade up 300mm(12") steel track

Load point height m (ft)		Load radius								At max. reach		
		1.0 m(3.3 ft)		2.0 m(6.6 ft)		3.0 m(9.8 ft)		4.0 m(13.1 ft)		Capacity		Reach
												m (ft)
4.0 m	kg									*580	*580	3.57
(13.1 ft)	lb									*1280	*1280	(11.7)
3.0 m	kg						*540	520	510	440		4.37
(9.8 ft)	lb						*1190	1150	1120	970		(14.4)
2.0 m	kg					*680	*680	580	510	430	380	4.77
(6.6 ft)	lb					*1500	*1500	1280	1120	950	840	(15.7)
1.0 m	kg					860	740	560	480	410	350	4.89
(3.3 ft)	lb					1900	1630	1230	1060	900	770	(16.1)
0.0 m	kg			*1320	1280	820	690	540	460	420	360	4.76
(0.0 ft)	lb			*2910	2820	1810	1520	1190	1010	930	790	(15.6)
-1.0 m	kg	*1570	*1570	1580	1290	810	680	530	460	480	410	4.34
(-3.3 ft)	lb	*3460	*3460	3480	2840	1790	1500	1170	1010	1060	900	(14.2)
-2.0 m	kg	*2520	*2520	*1520	1330	830	700			*640	570	3.50
(-6.6 ft)	lb	*5560	*5560	*3350	2930	1830	1540			*1410	1260	(11.5)

1. Lifting capacity is based on SAE J1097, ISO 10567.

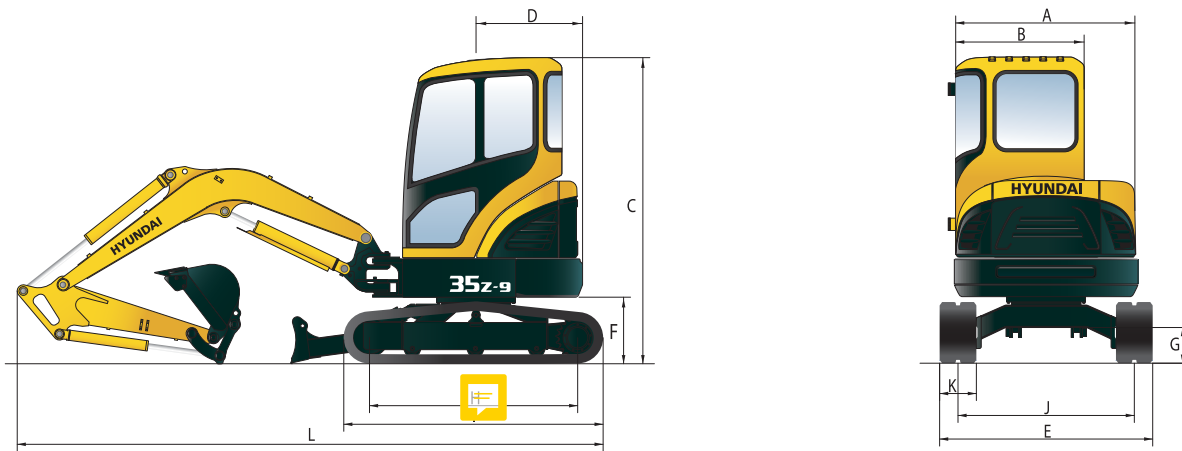
2. Lifting capacity of the Robex Series does not exceed 75% of the tipping load with the machine on firm, level ground or 87% of full hydraulic capacity.

3. The load point is a hook located on the back of the bucket.

4. (*) indicates the load limited by hydraulic capacity.

Dimensions & Working Range

R35Z-9 DIMENSIONS

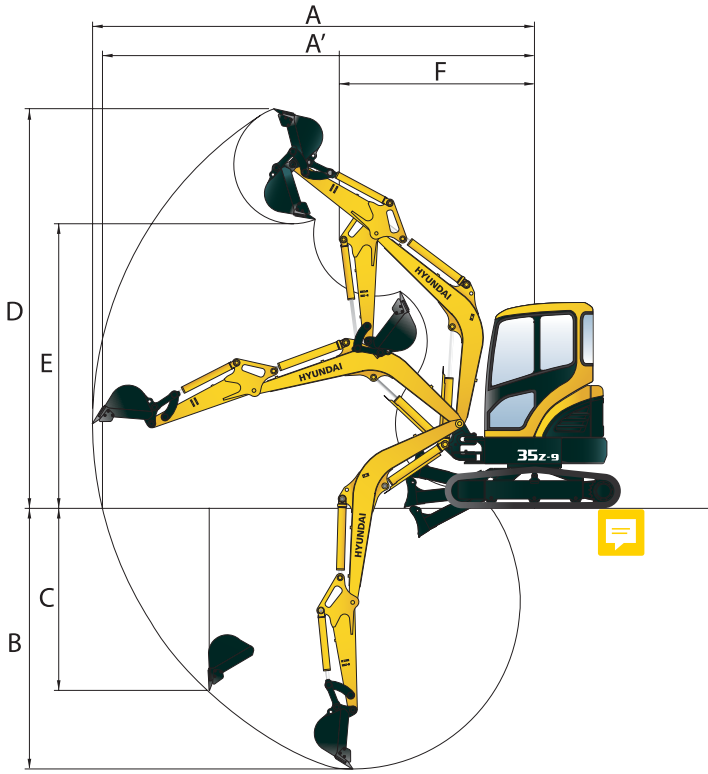


Unit: mm (ft-in)

A	Overall width of upper structure	1,500 (4' 11")	G	Min. Ground clearance	290 (0' 11")
B	Overall width of cab	1,050 (3' 5")	H	Tumbler distance	1,700 (5' 7")
C	Overall height of cab	2,500 (8' 2")	I	Track length	2,130 (6' 12")
D	Tail swing radius	870 (2' 10")	J	Track gauge	1,440 (4' 9")
E	Overall width	1,740 (5' 9")	K	Track shoe width	300 (0' 12")
F	Clearance under counterweight	540 (1' 9")	L	Overall length	4,790 (15' 9")

R35Z-9 WORKING RANGE

Unit : mm (ft-in)



Boom length	2,500 (8' 2")	
Arm length	1,300 (4' 3")	1,600 (5' 3")
A Max. digging reach	5,360 (17' 7")	5,610 (18' 5")
A' Max. digging reach on ground	5,240 (17' 2")	5,490 (18' 0")
B Max. digging depth	3,150 (10' 4")	3,440 (11' 3")
C Max. vertical wall digging depth	2,190 (7' 2")	2,450 (8' 0")
D Max. digging height	4,830 (15' 10")	5,000 (16' 5")
E Max. dumping height	3,450 (11' 4")	3,610 (11' 10")
F Min. swing radius	2,350 (7' 9")	2,370 (7' 9")

STANDARD EQUIPMENT

ISO standard cabin	-Accessory box	Engine coolant temperature	-Console box tilting system(LH.)	-Arm (1.3 m, 4' 3")
-Cabin FOPS(ISO 10262) TOPS(ISO 12117)	-Centralized monitoring	Preheat	-One front working light	-Steel shoe (300mm, 12")
-All-weather steel cab with all-around visibility	-Gauges	Low battery	-Electric horn	-Single acting piping (Breaker, etc)
-Safety glass windows	Fuel level gauge	Air cleaner clogging	-Battery (1 x 12 V x 80 AH)	-Double acting piping (Clamshell, etc)
Sliding fold-in front window	Engine coolant temperature gauge	Fuel empty	-Battery master switch	-Air conditioner
Sliding side window	-Warning	-Door and locks, one key	-Automatic swing brake	
-Lockable door	Quick clamp	-Mechanical suspension seat with seat belt	-Removable reservoir tank	
	Engine oil pressure	-Radio / USB Player	-Water separator, fuel line	
			-Mono boom (2.5 m, 8' 2")	

OPTIONAL EQUIPMENT

ISO standard canopy	-Accumulator, work equipment lowering	-Tool kit	-Long Arm (1.6m)
-Canopy FOPS(ISO 10262) TOPS(ISO 12117)	-Travel alarm	-Heater & Defroster	-Cabin work lamp
-Beacon lamp	-Quick coupler	-Rubber shoe (300mm, 12")	

* Standard and optional equipment may vary. Contact your Hyundai dealer for more information. The machine may vary according to International standards.

* The photos may include attachments and optional equipment that are not available in your area.

* Materials and specifications are subject to change without advance notice.

* All imperial measurements rounded off to the nearest pound or inch.

PLEASE CONTACT

 **HYUNDAI**
CONSTRUCTION EQUIPMENT
INDIA

Head Office : Plot No. A-2, M.I.D.C Chakan, Phase II, Village:
Khalumbre, Taluka: Khed, Dist.: Pune- 410501
Email Id: hyundai.care@theconnectionsindia.com
Tel. No.: 02135-301700 Fax. No.: 02135-301712
Toll Free No.: 1800 209 8600

Regional Office North : Delhi Contact No. +91 11 45604521
Regional Office East : Kolkata Contact No. +913330581802
Regional Office South : Bengaluru Contact No. +91 08032521723
Regional Office West : Mumbai Contact No. +91 22 40240320